

..... 1

..... 2

Servo On 3

Motor State 3

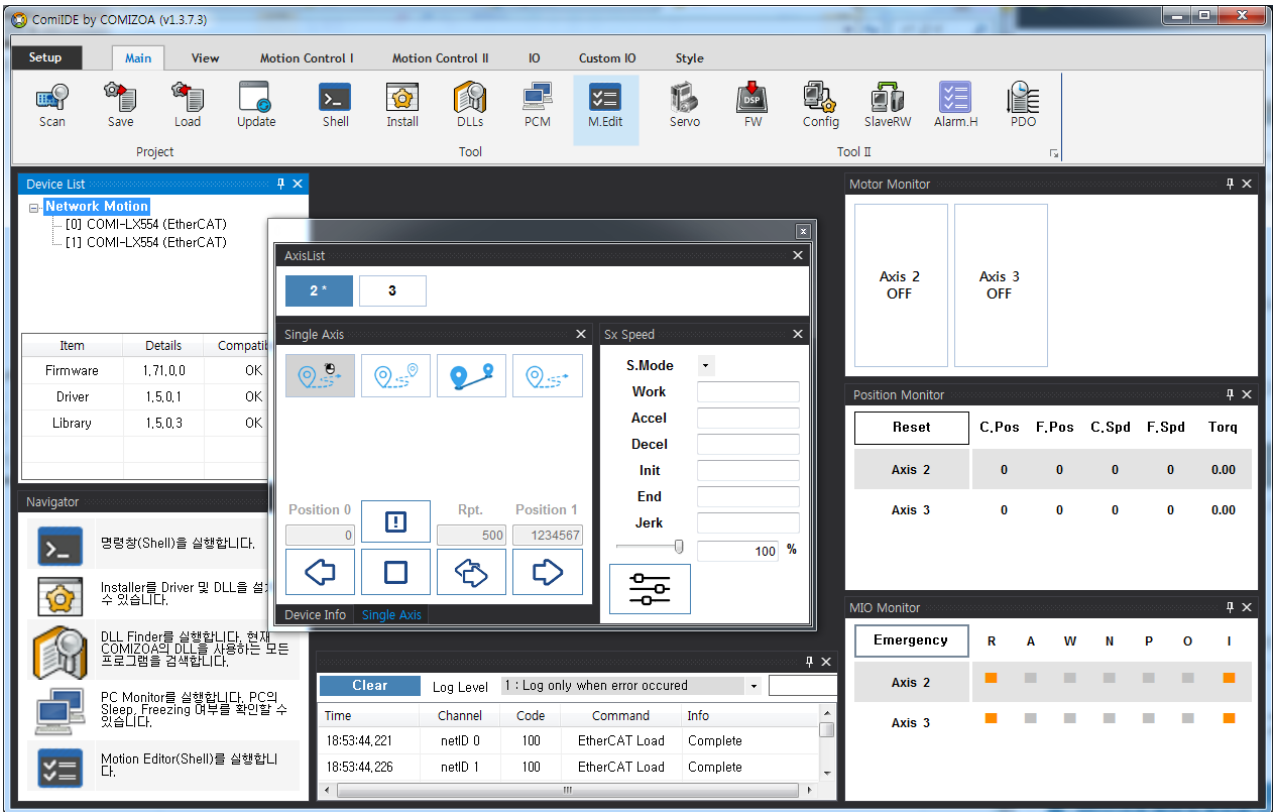
..... 4

..... 5

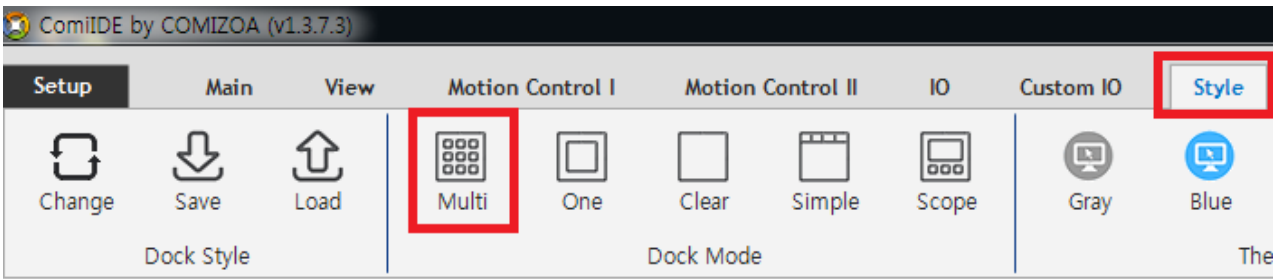
..... 7

× ComiIDE

- ComiIDE



, Style - Multi



Device List
⌵ ×

[-] **Network Motion**

- [0] COMI-LX554 (EtherCAT)
- [1] COMI-LX554 (EtherCAT)

Item	Details	Compatibility
Firmware	1,71,0,0	OK
Driver	1,5,0,1	OK
Library	1,5,0,3	OK

- DeviceList , Load .
- Device가 , .

Clear
Log Level
1 : Log only when error occurred
▼

Find

Time	Channel	Code	Command	Info
23:21:32,750	netID 0	100	EtherCAT Load	Complete
23:21:32,773	netID 1	100	EtherCAT Load	Complete

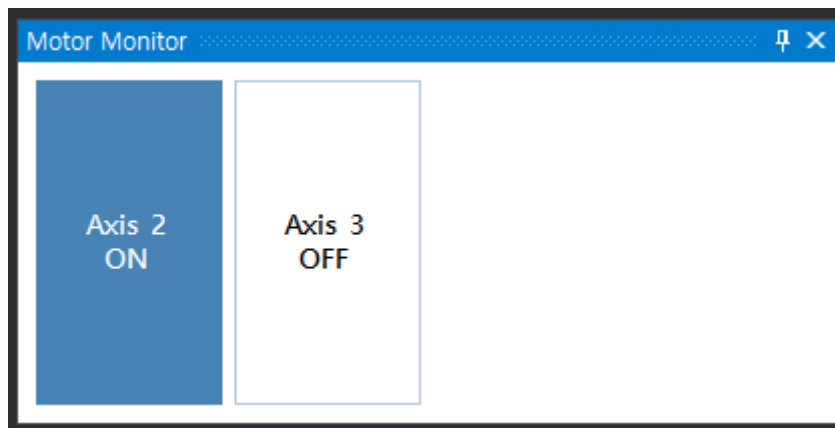
- LogView Load 가 .
- LogView Log View .

Servo On

- Motor Monitor 가 .



- Servo_On .



- Motor Monitor Motor ServoOn Stop .
- Motor Monitor **Motor Monitor** .

Motor State

- Motor가 , .

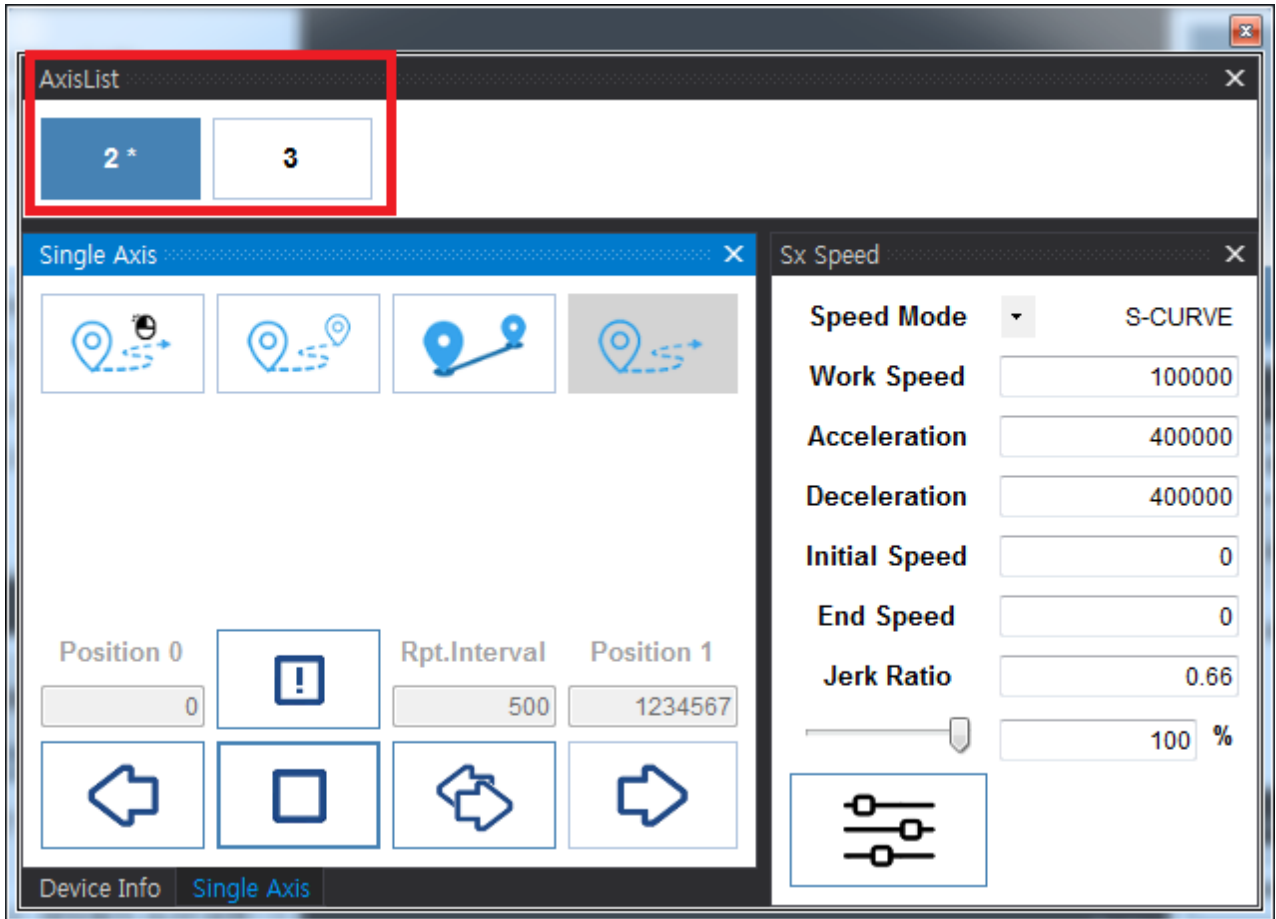


- Motor 가 Alarm , 가
- , Servo-On .
- MIO Monitor Motor가 가 .

MIO Monitor							
Emergency	RDY	ALM	WARN	NEL	PEL	ORG	INP
Axis 2	Orange	Grey	Grey	Grey	Grey	Grey	Orange
Axis 3	Orange	Grey	Grey	Grey	Grey	Grey	Orange

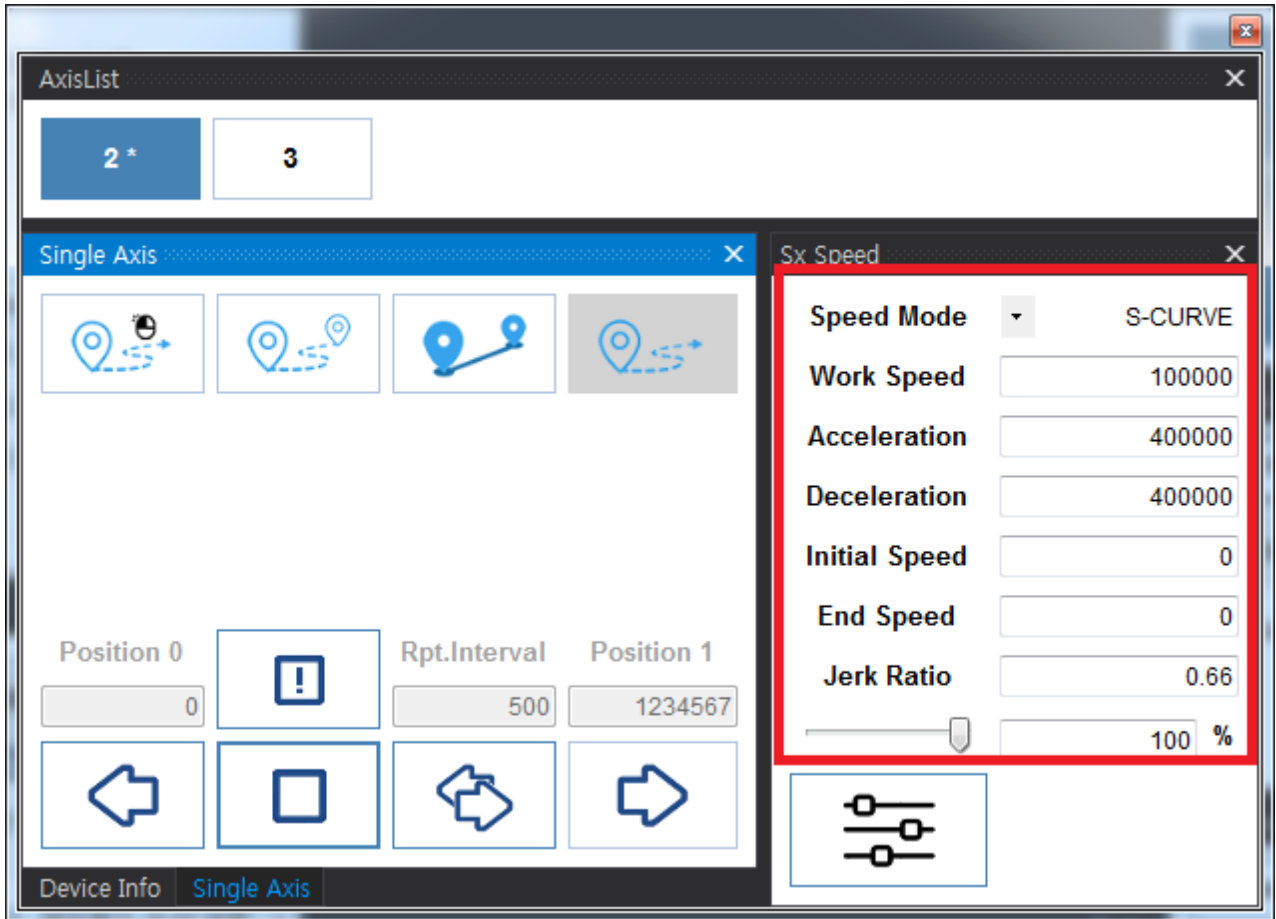
- , Alarm , PEL (Limit+) / NEL(Limit-) 가
- Ready , RDY 가 .
- MIO Monitor **MIO Monitor** .

- AxisList .

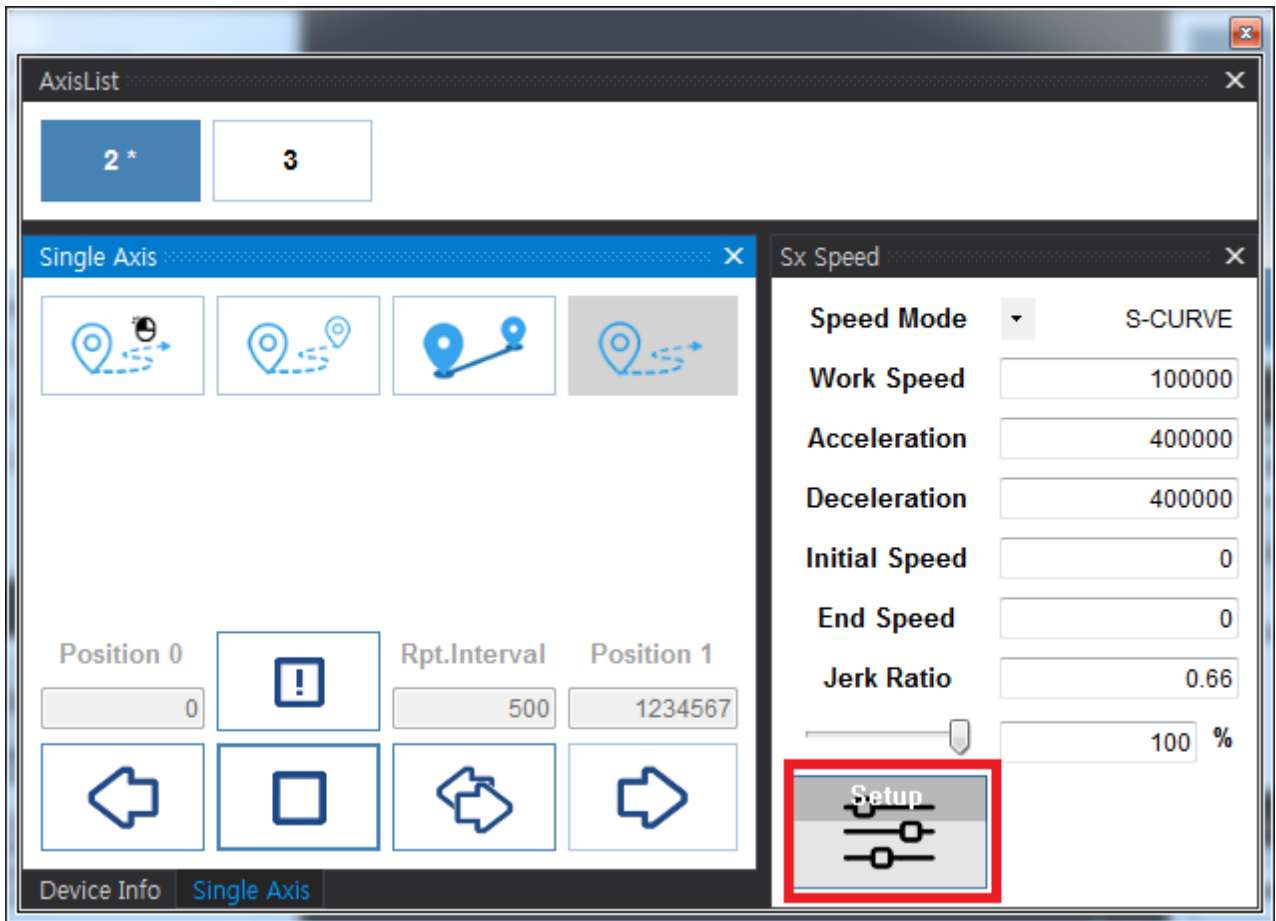


- AxisList

AxisList

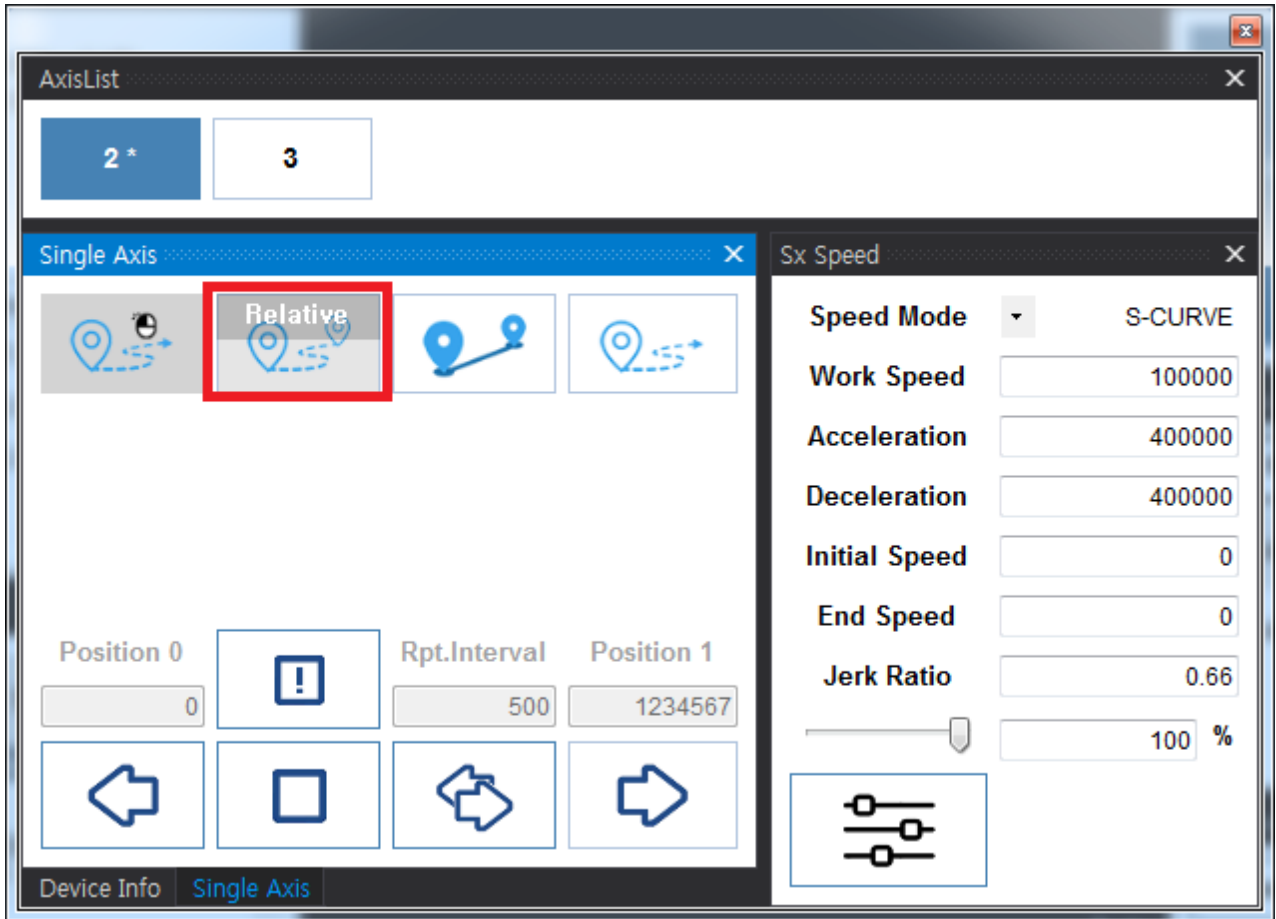


• 가 ,

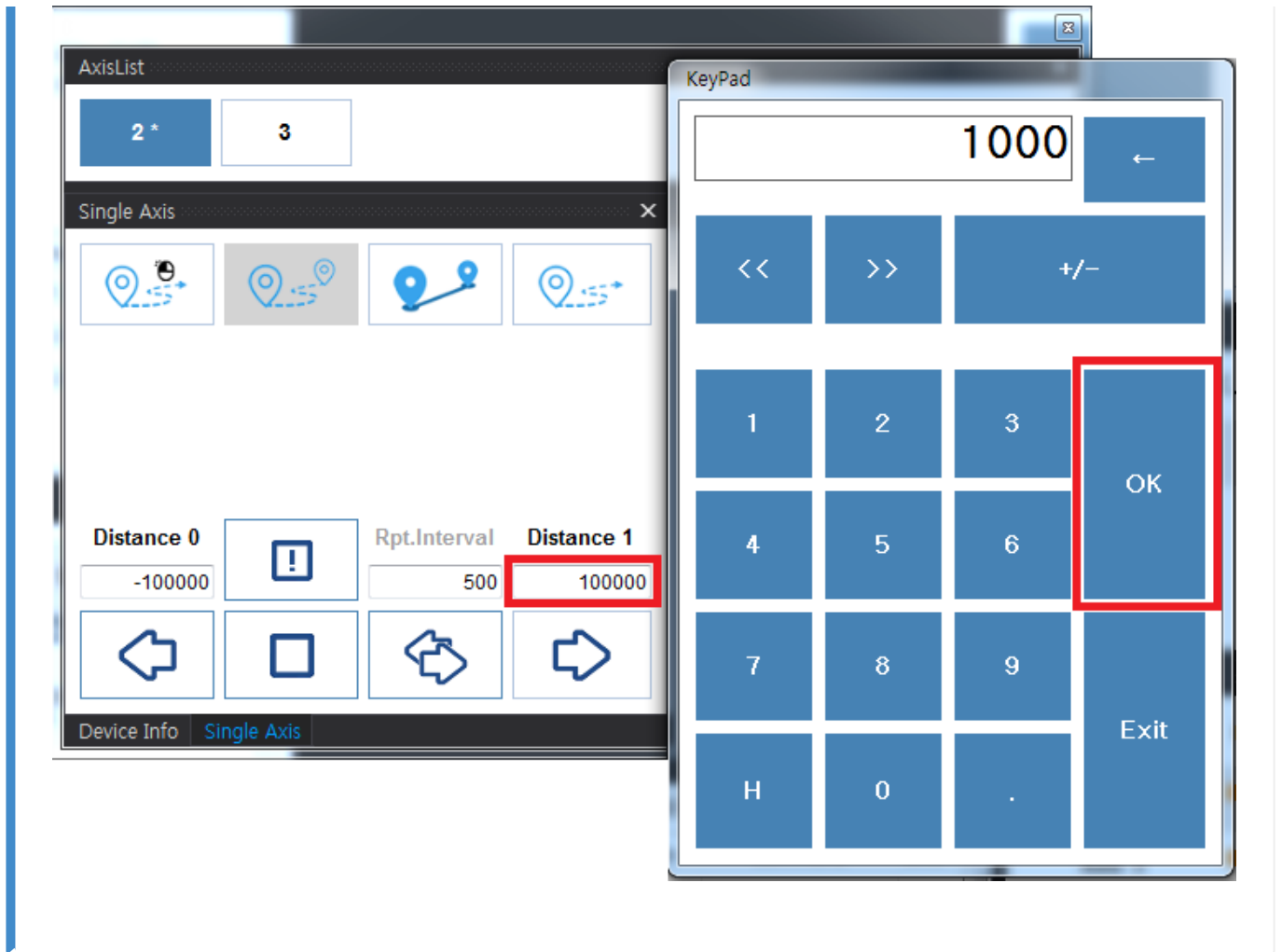


- Setup 가
- **SetSpeed_Sx**
- Keypad **Keypad**

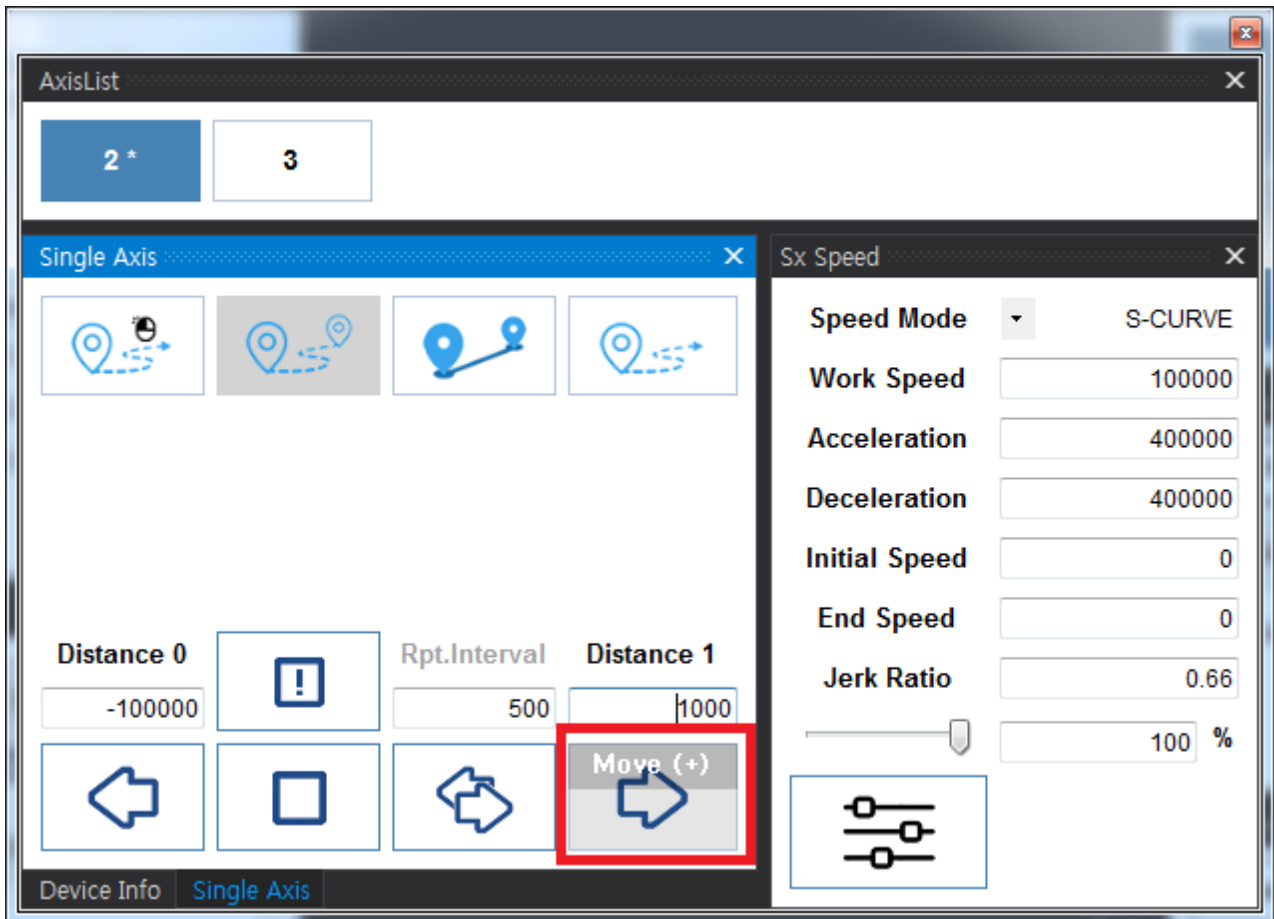
- 1) RelativeMove-Mode



- Distance



- Move



- Position Monitor Command Position Feedback Position

- Position Monitor **Position Monitor**

Reset	C.Position	F.Position	C.Speed	F.Speed	Torque
Axis 2	1 000	1 000	0	0	1.50
Axis 3	0	0	0	0	0.00

- Motor , 가
- Feedback Position ,
- ,
- , Trouble Shooting
- **EtherCAT TroubleShooting**

- **PCI_Pulse TroubleShooting**
- **NEMO TroubleShooting**

1)

From:

<http://comizoa.co.kr/info/> - -

Permanent link:

http://comizoa.co.kr/info/doku.php?id=application:comiide:25_begin:10_test_motion&rev=1544441558

Last update: **2024/07/08 18:23**