

..... 1

..... 2

Servo On 3

Motor State 3

..... 4

..... 5

..... 7

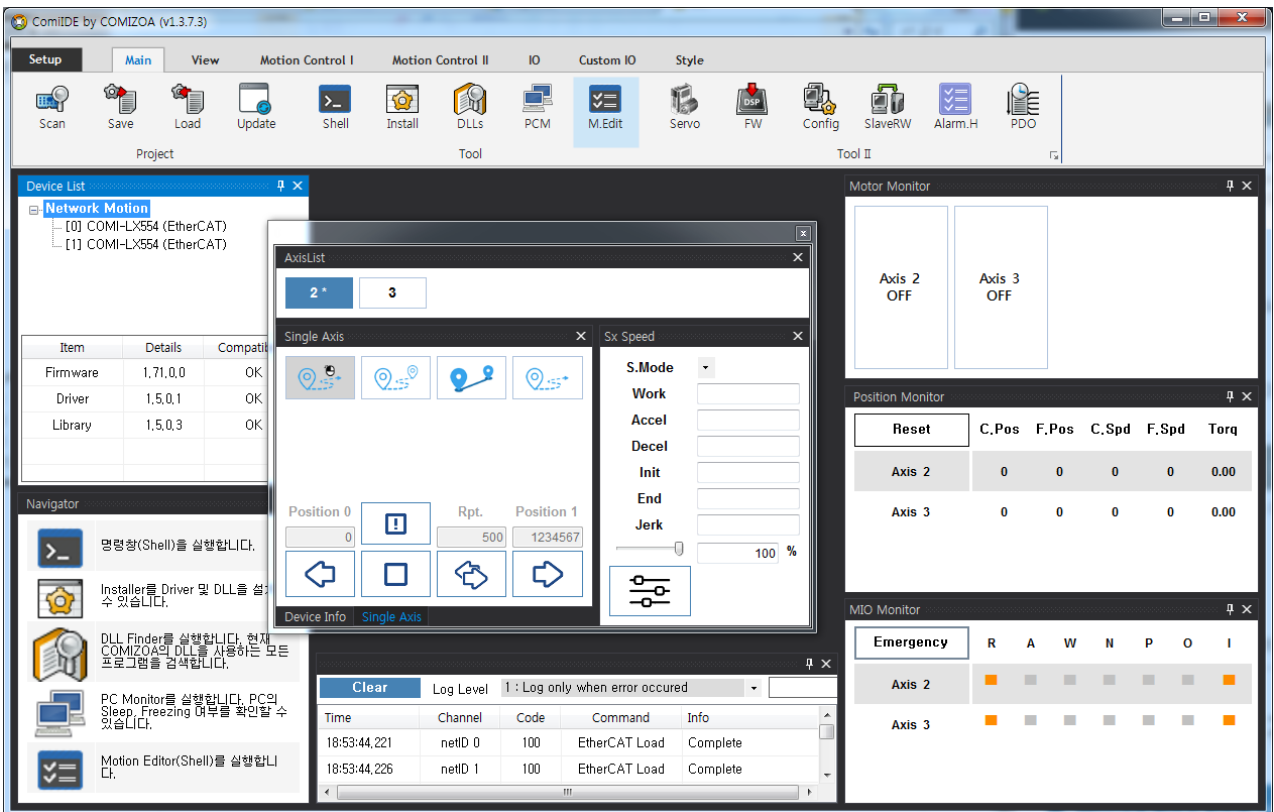
..... 9

..... 11

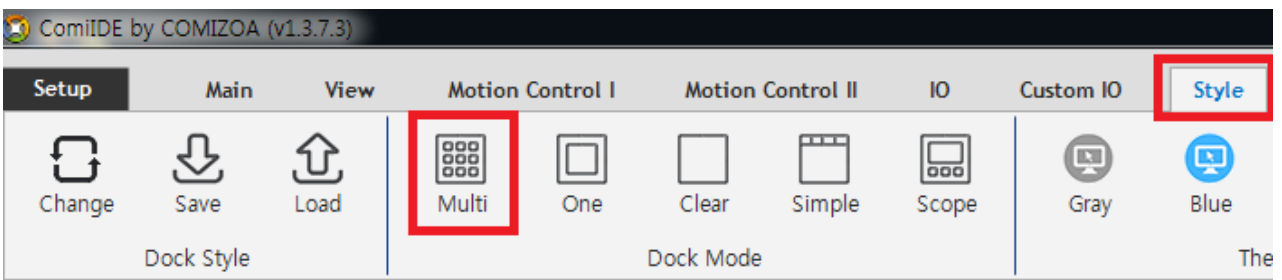
Motion Test

× ComiIDE

- ComiIDE



- , Style - Multi



Device List
⌵ ×

[-] **Network Motion**

- [0] COMI-LX554 (EtherCAT)
- [1] COMI-LX554 (EtherCAT)

Item	Details	Compatibility
Firmware	1,71,0,0	OK
Driver	1,5,0,1	OK
Library	1,5,0,3	OK

- DeviceList , Load .
- Device가 , .

Clear
Log Level
1 : Log only when error occurred
▼

Find

Time	Channel	Code	Command	Info
23:21:32,750	netID 0	100	EtherCAT Load	Complete
23:21:32,773	netID 1	100	EtherCAT Load	Complete

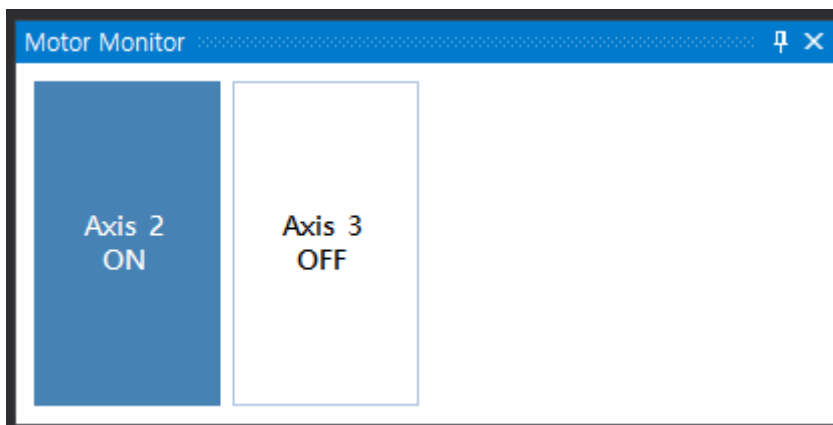
- LogView Load 가 .
- LogView Log View .

Servo On

- Motor Monitor 가



- Servo_On

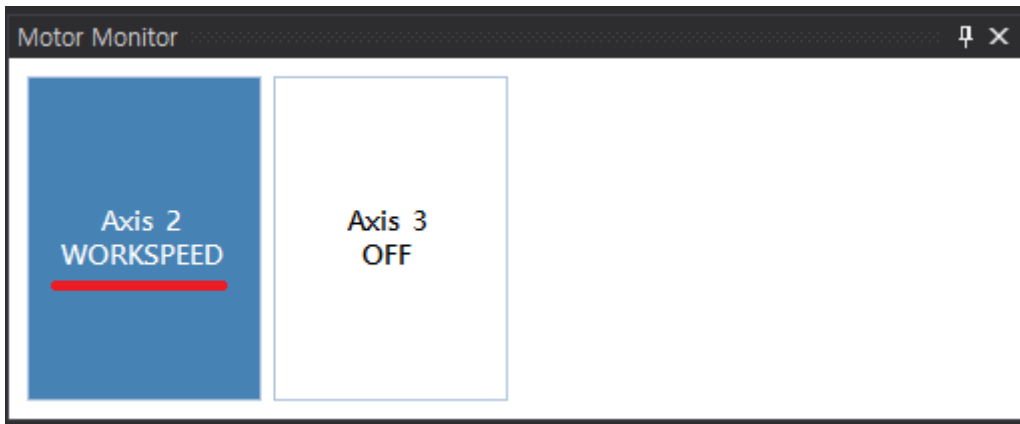


- Motor Monitor Motor ServoOn Stop

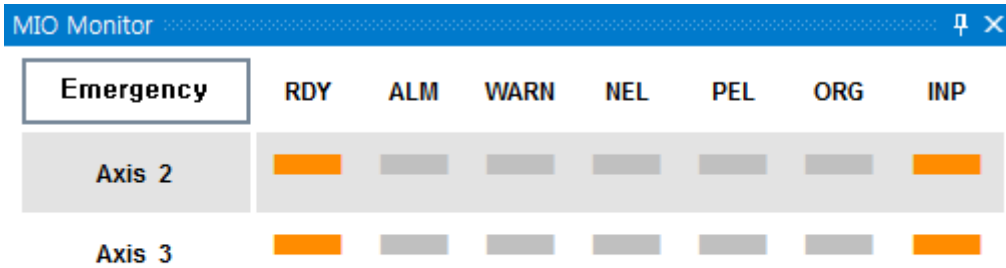
- Motor Monitor **Motor Monitor**

Motor State

- Motor가

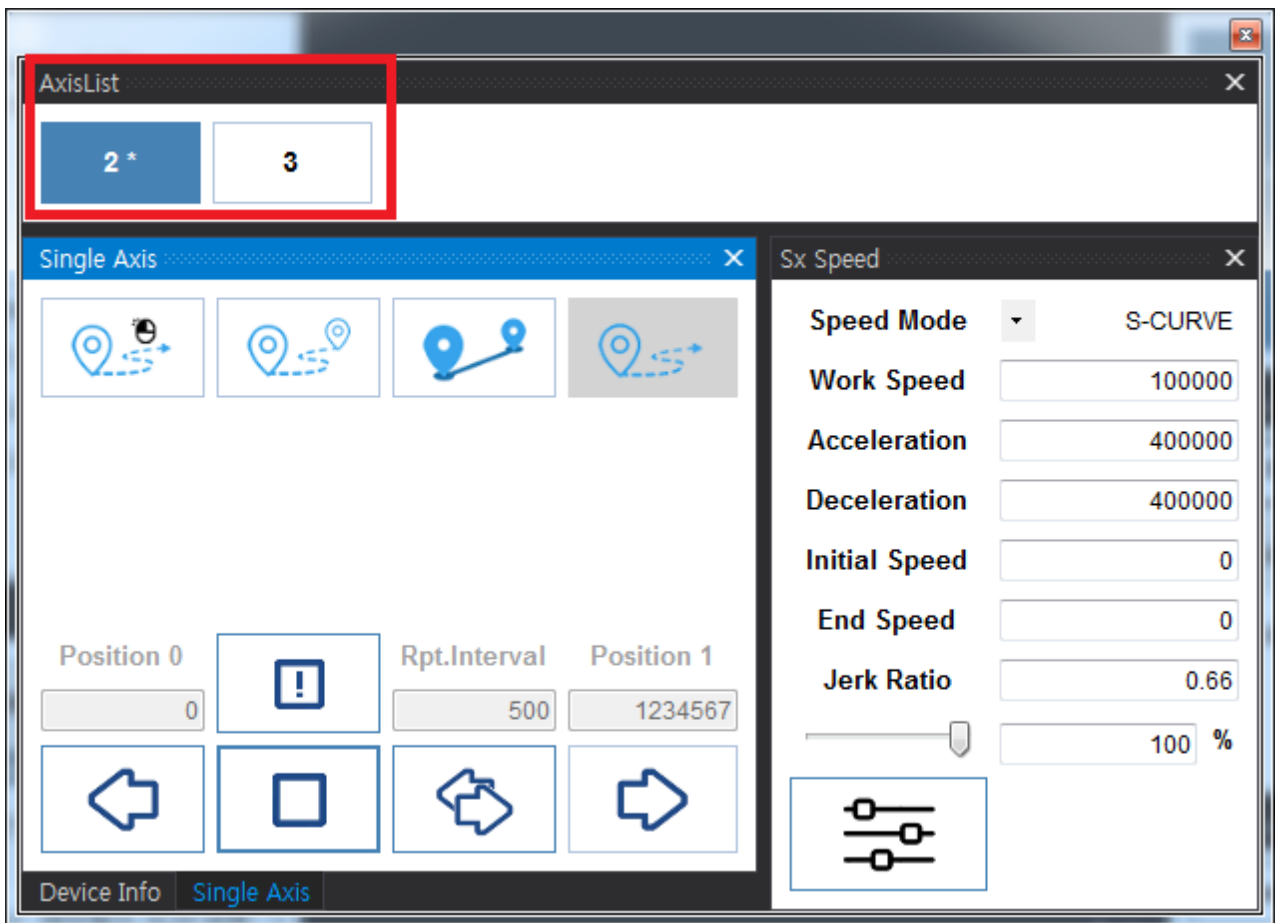


- Motor 가 Alarm
- , Servo-On
- MIO Monitor Motor가 가



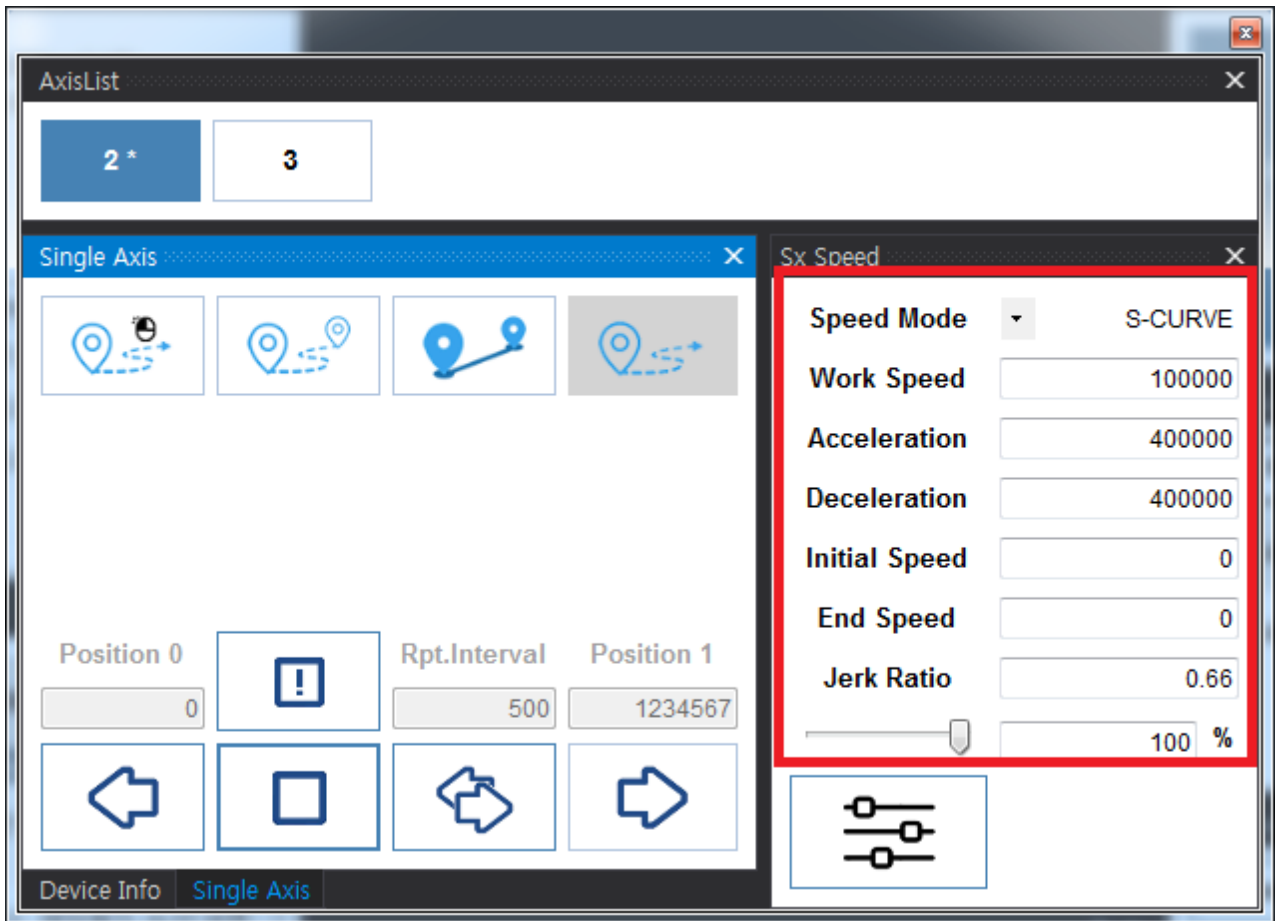
- , Alarm , PEL (Limit+) / NEL(Limit-) 가
- Ready , RDY 가
- MIO Monitor **MIO Monitor**

- AxisList

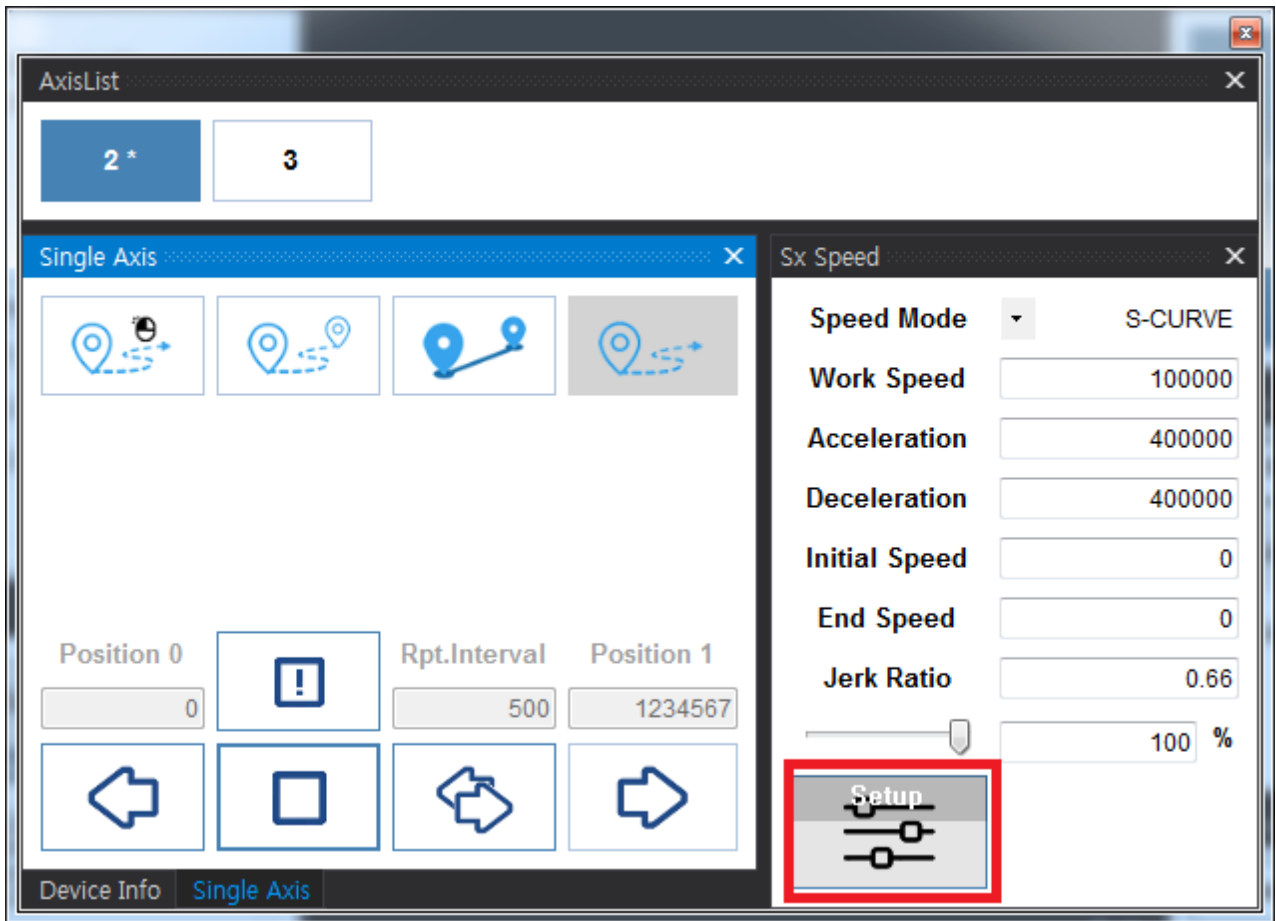


- AxisList

AxisList

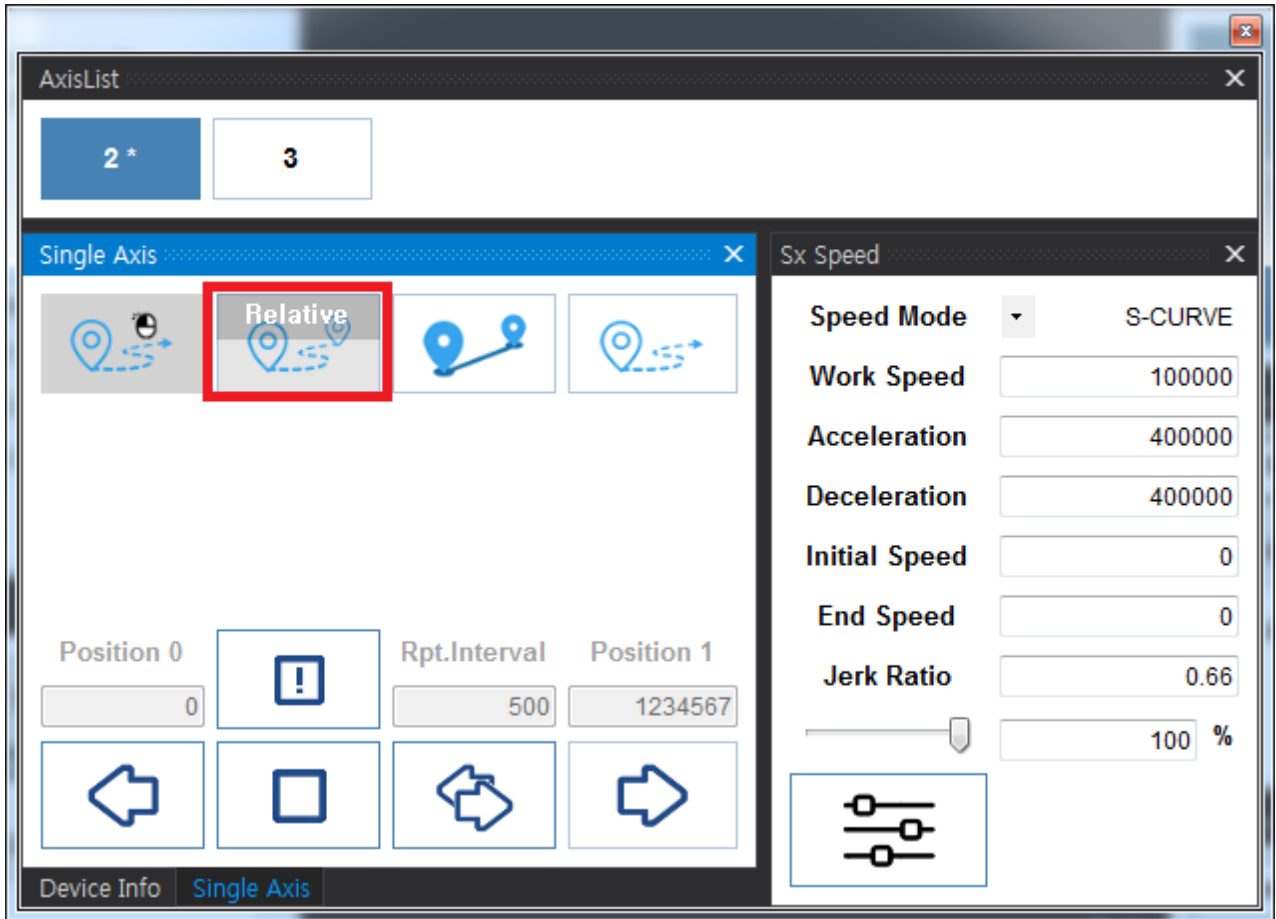


• 가 ,

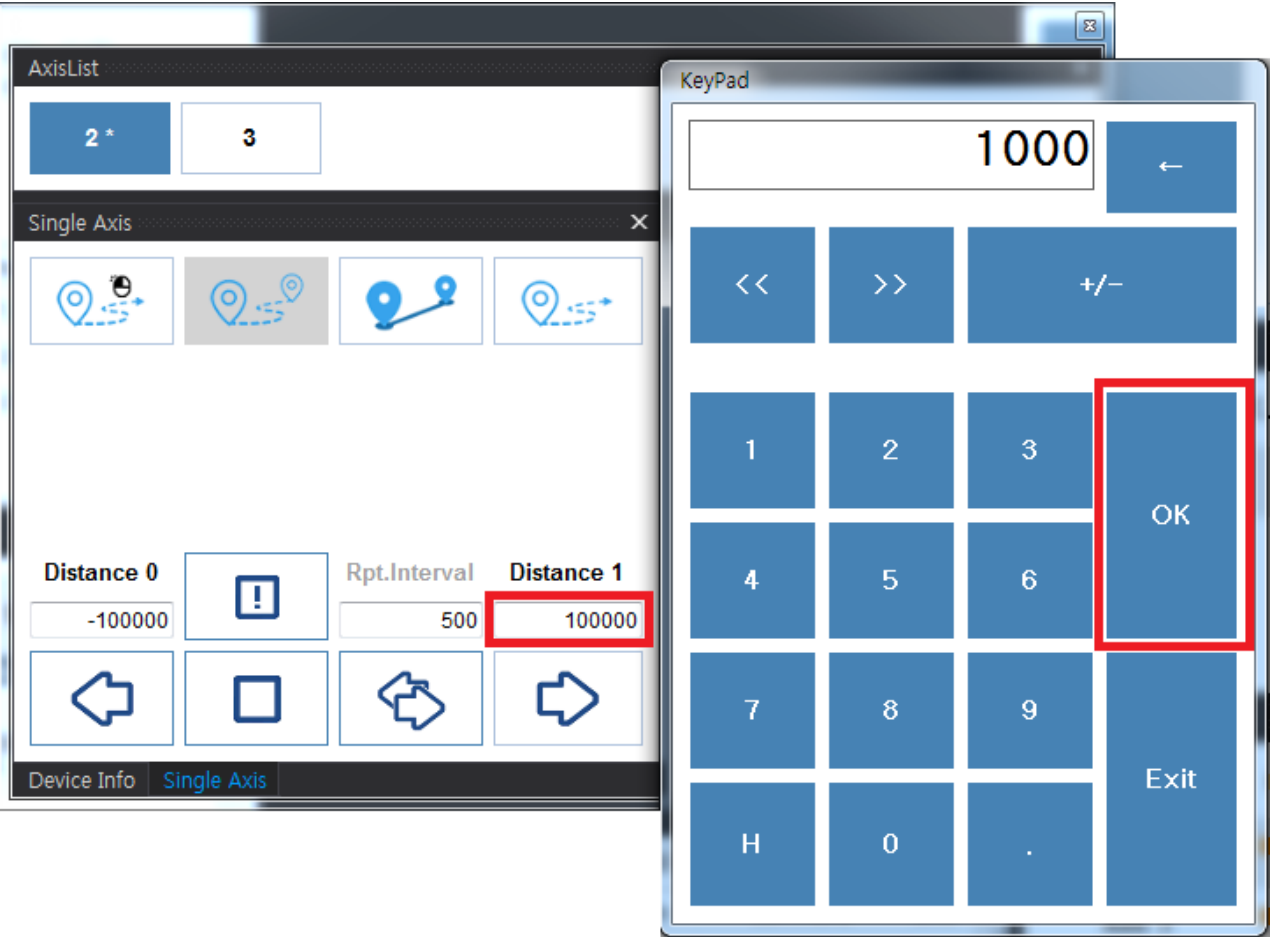


- Setup 가
- **SetSpeed_Sx**
- KeyPad **KeyPad**

- ¹⁾ RelativeMove-Mode



- Distance



- Move

- **SingleAxis**

Trouble Shooting

- **EtherCAT TroubleShooting**
- **PCI_Pulse TroubleShooting**
- **NEMO TroubleShooting**

1)

2)

From:

<http://comizoa.co.kr/info/> - -

Permanent link:

http://comizoa.co.kr/info/doku.php?id=application:comiide:25_begin:10_test_motion&rev=1559011026

Last update: **2024/07/08 18:23**