

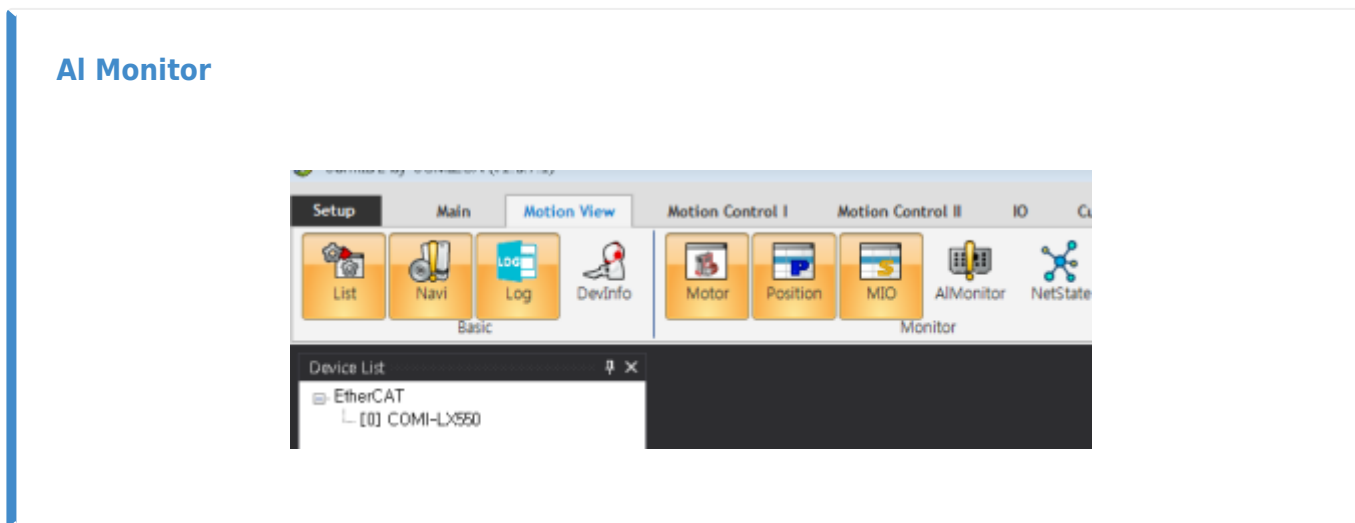
AI Monitor ..... 1  
AI Monitor ..... 1  
AI Status ..... 1  
CRC Error ..... 2

# AI Monitor

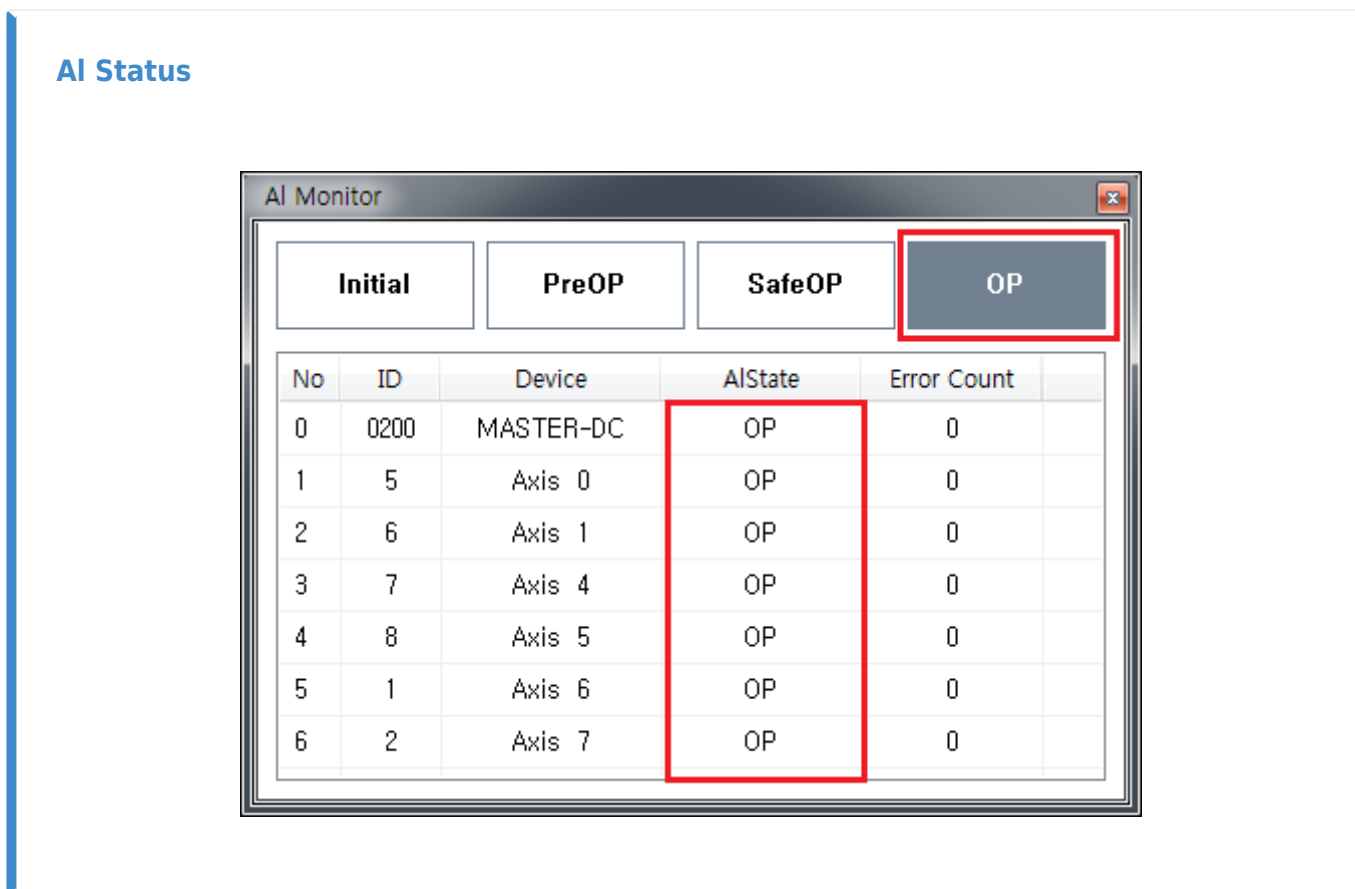
× EtherCAT  
AI State

AI-State    CRC Error  
**AI State**

AI Monitor



- View    Monitor    AI Monitor



- AI Monitor <sup>1)</sup>    AI State    AI State

No	ID	Device	AIState	Error Count
0	0200	MASTER-DC	SAFEOP	0
1	5	Axis 0	SAFEOP	0
2	6	Axis 1	SAFEOP	0
3	7	Axis 4	SAFEOP	0
4	8	Axis 5	SAFEOP	0
5	1	Axis 6	SAFEOP	0
6	2	Axis 7	SAFEOP	0

- AI State  
◦ AI State 가  
◦ **SafeOP** 가

### CRC Error

- CRC Error가 "Error Count" 가
- CRC 가 가

The screenshot shows a window titled "AI Monitor" with four tabs: "Initial", "PreOP", "SafeOP", and "OP". The "OP" tab is selected. Below the tabs is a table with the following data:

No	ID	Device	AIState	Error Count
0	0200	MASTER-DC	OP	55
1	5	Axis 0	OP	0
2	6	Axis 1	OP	0
3	7	Axis 4	OP	0
4	8	Axis 5	OP	0
5	1	Axis 6	OP	0
6	2	Axis 7	OP	0

- AI State가 OP
- 가
- MASTER-DC Error Count , ErrorCount 가

1)

View Monitor **AI Monitor**

From:  
<http://comizoa.co.kr/info/> - -

Permanent link:  
<http://comizoa.co.kr/info/doku.php?id=application:comiide:monitor:almonitor>

Last update: **2024/07/08 18:23**