

Intro 1
..... 1
..... 2
Info 4

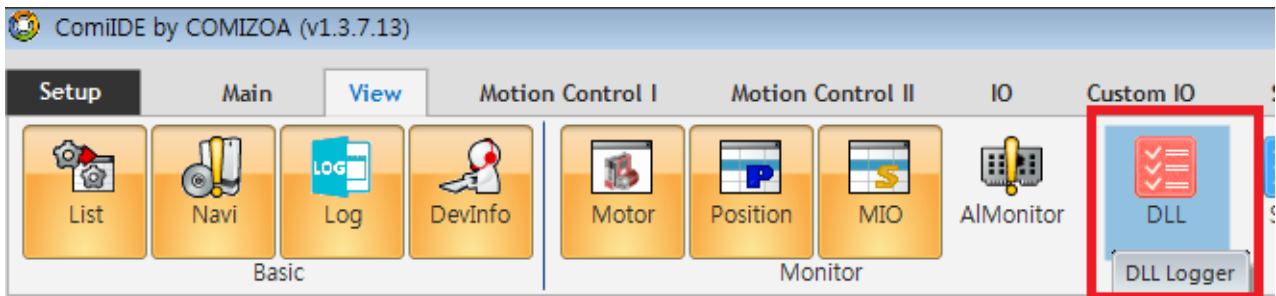
DLL Logger

× DLL Logger


Intro


- DLL API Logging
- Log Level, Log Tpye, Target API
- Flatform


• View - DLL





DLL Log ✖


Start

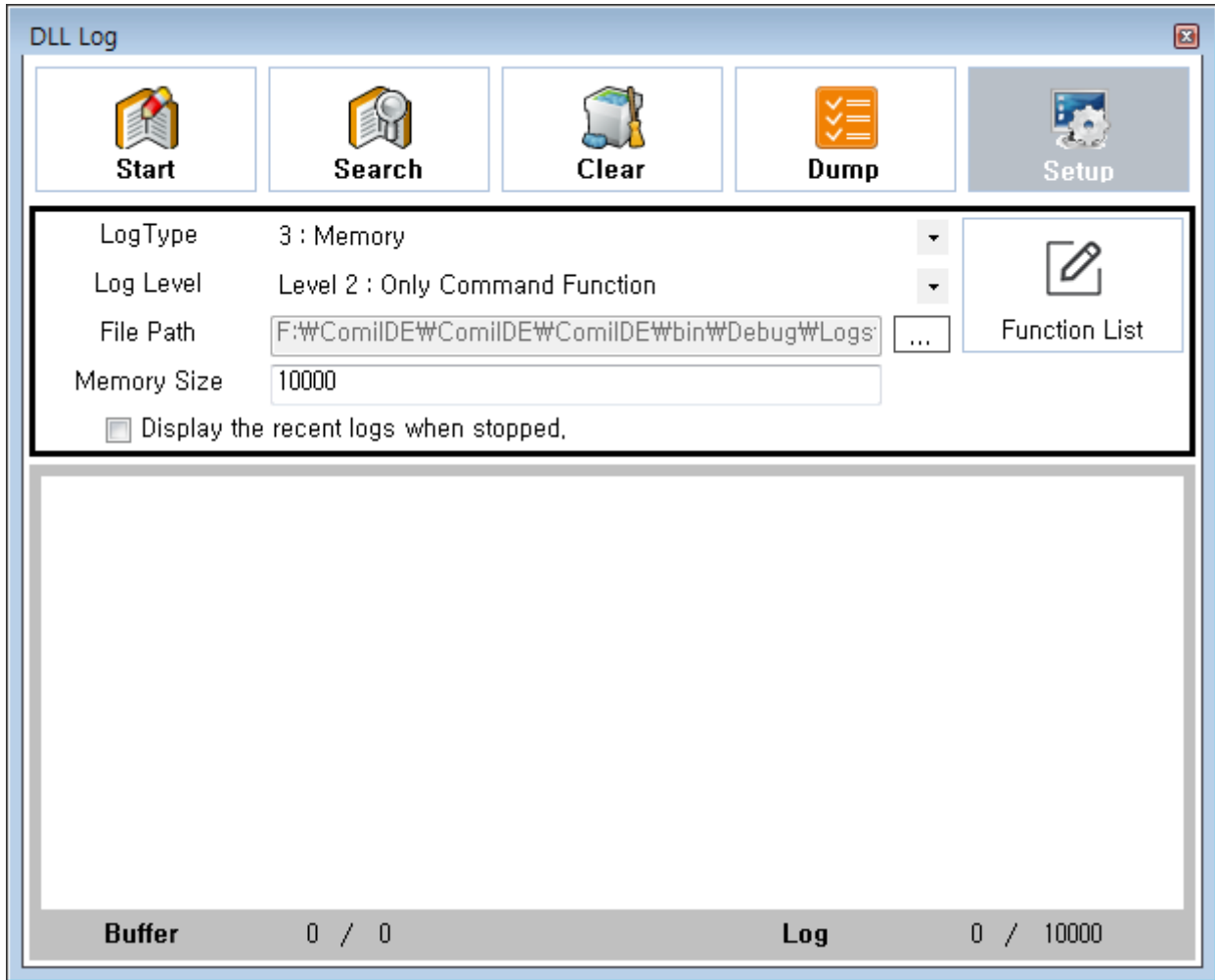

Search


Clear


Dump


Setup

Buffer 0 / 0**Log** 0 / 10000



• **Setup**

Logging

Option

• Setup

• Log Type

◦ File :

◦ TraceViewer :

Log

◦ LogViewer : (DLL Logger)

Log

◦ **Memory : Memory Memory Size**

Queue

Dump

• Log Level

◦ Disable : No Debug Logging

◦ Only Error : Logging

◦ Only Command Function : Error

Set

Command

Logging

◦ Except Some or Included : Excluded

Command

Included

Get Logging

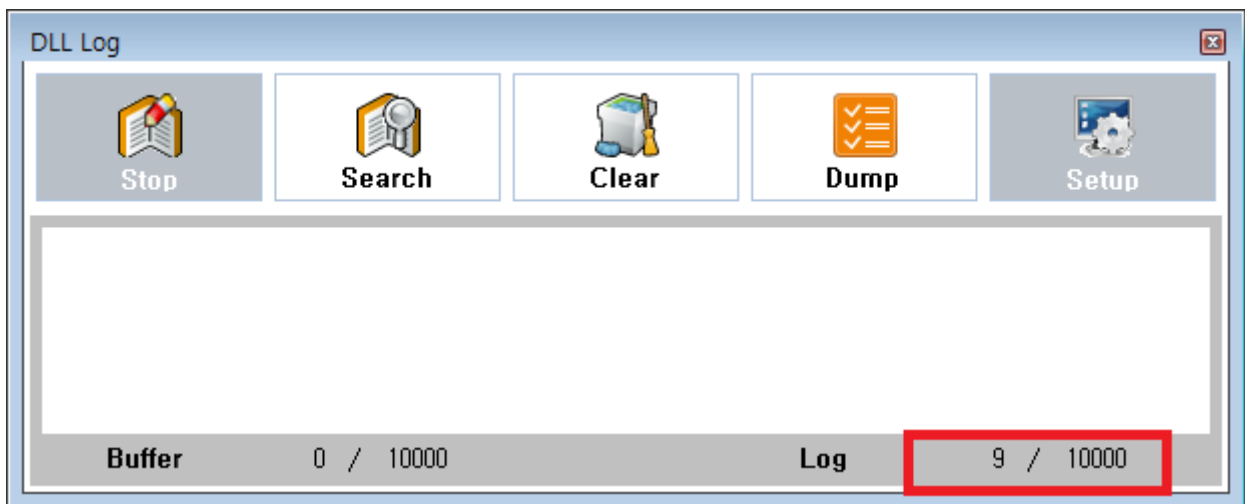
◦ All Function : Excluded

Logging

- File Path : LogType file Memory .
- Memory Size : LogType Memory
 - Line " 1000 " 1000 가 .
- Display the recent logs when stopped.
 - LogType LogView , Queue
log Viewer .
- **Start** Logging .
- Memory **Dump** File Log 가 Viewer file
- LogType LogView , **Stop** Log
가 .

Info

- LogType LogView , , Log Count 가



- , Log 가 Viewer buffer

• Search

Find Option

The screenshot shows the DLL Logger application window. At the top, there are five buttons: Start, Search, Clear, Dump, and Setup. The main area displays a log of system events. A search bar at the bottom contains the text 'ecmSxCtl_SetSvon'. Below the search bar, there are three buttons: Search ↓, Search ↑, and Search All. The search results are displayed in a separate window titled 'Find result - 4 hits', showing four log entries for the function 'ecmSxCtl_SetSvon'.

DLL Log

Start Search Clear Dump Setup

[16:22:18:975] <000004726> <ENTER> ecmSxCtl_SetSvon (0x0, 2, 1, 0xa5e4a0):
[16:22:19:058] <000004726> <EXIT> ecmSxCtl_SetSvon(): Ret=46732, Err=0

[16:22:19:749] <000006472> <ENTER> ecmSxCtl_SetSvon (0x0, 2, 1, 1, 0x2d86c6c):
<000006472> After Stop: CP=0, FP=0, Mst=0, Flg=0x1037, DI=0x208
[16:22:19:749] <000006472> <EXIT> ecmSxCtl_SetSvon(): Ret=46915, Err=0

[16:22:19:755] <000006476> <ENTER> ecmSxCtl_SetSvon (0x0, 2, 0, 0xa5e4a0):
[16:22:19:756] <000006476> <EXIT> ecmSxCtl_SetSvon(): Ret=46916, Err=0

[16:22:22:692] <000013678> <ENTER> ecmSxCtl_SetSvon (0x0, 3, 1, 0xa5e4a0):
[16:22:22:771] <000013678> <EXIT> ecmSxCtl_SetSvon(): Ret=47649, Err=0

Buffer 0 / 10000 Log 172 / 10000

ecmSxCtl_SetSvon Search ↓ Search ↑ Search All

Find result - 4 hits

[16:22:18:975] <000004726> <ENTER> ecmSxCtl_SetSvon (0x0, 2, 1, 0xa5e4a0):
[16:22:19:755] <000006476> <ENTER> ecmSxCtl_SetSvon (0x0, 2, 0, 0xa5e4a0):
[16:22:22:692] <000013678> <ENTER> ecmSxCtl_SetSvon (0x0, 3, 1, 0xa5e4a0):
[16:25:50:204] <000526660> <ENTER> ecmSxCtl_SetSvon (0x0, 2, 1, 0xa5e4a0):

From:

<http://comizoa.co.kr/info/> - -

Permanent link:

http://comizoa.co.kr/info/doku.php?id=application:comiide:monitor:dll_logger&rev=1559547209

Last update: **2024/07/08 18:23**