

..... 1

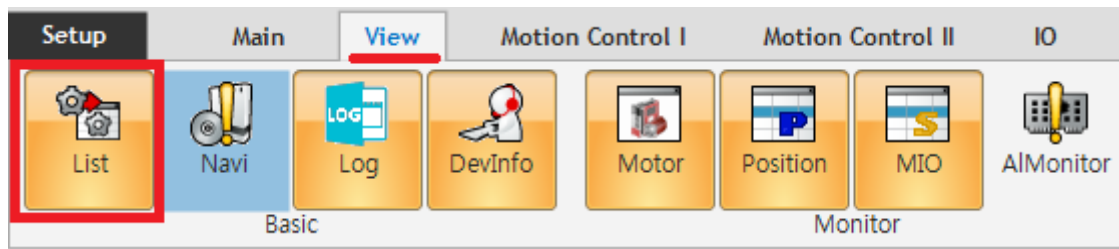
..... 1

# Device List

x

SW

## • View - List



Device List [Pin] [Close]

- [-] EtherCAT
  - [-] [0] COMI-LX554
    - [-] [0201] ETS-D08MN
      - ... Digital In
      - ... Digital Out
    - [-] [0202] ETS-D08MN
      - ... Digital In
      - ... Digital Out
    - ... [0221] ETS-D016N (DO)
    - ... [0230] ETS-A004V-E (AO)
    - ... [0231] ETS-AI08AH (AI)
    - ... [0233] ECS-DI16N (DI)
    - ... [0234] ECS-DO16N (DO)
  - ... [1] COMI-LX554

Item	Details	Compatibility	
Firmware	1.75.0.0	OK	
Driver	1.5.0.1	OK	
Library	1.5.0.6	OK	

- List Slave

The screenshot shows the 'Device List' application window. On the left, a tree view displays the hierarchy of EtherCAT devices. The device '[0221] ETS-DO16N (DO)' is highlighted with a red box. Below the tree view is a table with columns 'Item', 'Details', and 'Compatibil'. On the right, a configuration window for '[0221] ETS-DO16N' is open, showing a grid of DO channels (DO 32 to DO 47) and four main function buttons: Setup, Logic, Control, and Exit.

Item	Details	Compatibil
Firmware	1,75,0,0	OK
Driver	1,5,0,1	OK
Library	1,5,0,6	OK

- **Firmware - Driver(WDM) - Library(DLL)**

Device List ↑ ×

- [-] EtherCAT
  - [-] [0] COMI-LX554
    - [-] [0201] ETS-D08MN
      - ... Digital In
      - ... Digital Out
    - [-] [0202] ETS-D08MN
      - ... Digital In
      - ... Digital Out
    - ... [0221] ETS-DO16N (DO)
    - ... [0230] ETS-AO04V-E (AO)
    - ... [0231] ETS-AI08AH (AI)
    - ... [0233] ECS-DI16N (DI)
    - ... [0234] ECS-DO16N (DO)
  - ... [1] COMI-LX554

Item	Details	Compatibility
Firmware	1,75,0,0	OK
Driver	1,5,0,1	OK
Library	1,5,0,6	OK

NG

Log View

Device List

- [-] EtherCAT
  - [0] COMI-LX554
    - [0201] ETS-D08MN
      - ... Digital In
      - ... Digital Out
    - [0202] ETS-D08MN
      - ... Digital In
      - ... Digital Out
    - [0221] ETS-D016N (DO)
    - [0230] ETS-A004V-E (AO)
    - [0231] ETS-AI08AH (AI)
    - [0233] ECS-DI16N (DI)
    - [0234] ECS-D016N (DO)
  - [1] COMI-LX554

Item	Details	Compatibility
Firmware	1.75.0.0	OK
Driver	1.5.0.1	OK
Library	1.5.0.1	NG

LogView

Clear Log Level 4 : Log when Setup changed Search

Time	Channel	Code	Command	Info
10:20:49,232	Axis 1	0	ecmSxCfg_GetU,..	(netID = 0, unitDistance = 1 → 10)
10:20:49,241	Axis 2	0	ecmSxCfg_GetU,..	(netID = 0, unitDistance = 1 → 10)
10:21:32,143	Device List	110	Compare	Library version is lower than the Firmware
10:21:32,159	Device List	110	Compare	Change the Library to : Not compared

× SW ( ) FW Down, , BSOD, Hang

comizoa, , ide, , , ,

From: <http://comizoa.co.kr/info/> - -

Permanent link: <http://comizoa.co.kr/info/doku.php?id=application:comiide:tool:devlist>

Last update: **2024/07/08 18:23**