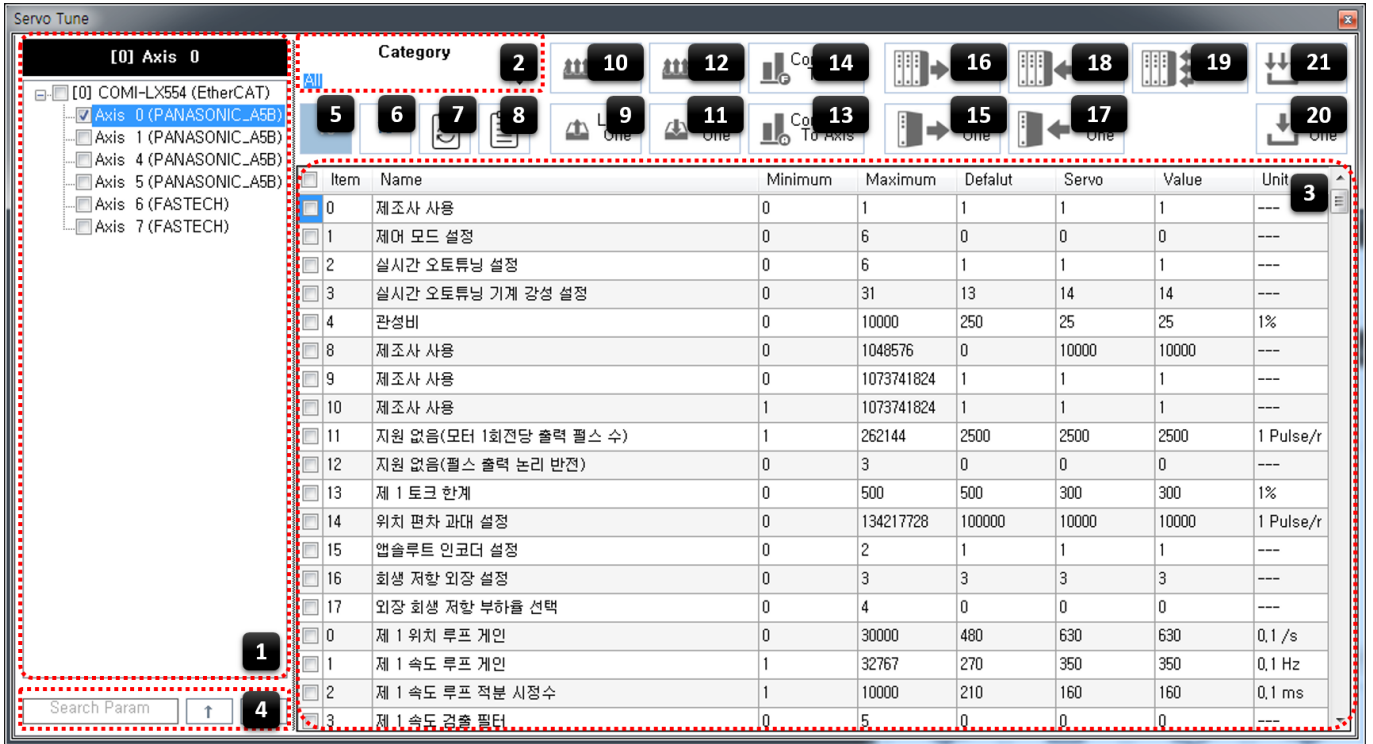


Check ..... 1

### × ServoTunes



### 1 AxisList

- LoadOne / SaveOne / ReadOne One
- LoadAll / SaveAll / ReadAll All

**Check**

• ReadOne "Axis 4" ( )

• ReadAll "Axis 0" ( )

### 2 Category

- Category

- Category

### 3 Parameter List

- - Minimum : 가
  - Maximum : 가
  - Default : <sup>1)</sup>
  - **Servo :**
  - **Value : ServoTunes**
    - 'Servo' Write
    - Value cell
  - **MotionIO** 가

### 4 Search Param

- 

### 5 10 6 16

- 10 16
- Minimum, Maximum, Default, Servo, Value

### 7 Param Reset

- 'Servo' / 'Value'
- , Read

### 8 View Details

- Index, DataType, DataSize

### 9 LoadOne 10 LoadAll

- <sup>2)</sup>
- 가
- ex) Omron / Panasonic

### 11 SaveOne 12 SaveAll

- 
- Read

### 13 CompareToAxis

-

### 14 CompareToFile

- SaveOne

### 15 ReadOne 16 ReadAll

- Load 'Value' 'Servo'

### 17 WriteOne

- Value

### 18 Write 1:N

- Value

### 19 Write N:N

- Value

### 20 EepOne 21 EepAll

- 가 EEPROM

### × Warning!

ServoTunes

comizoa, , ide, ethercat, , servotunes, ,  
 1)

2)  
 ServoTunes 가

From:

<http://comizoa.co.kr/info/> - -

Permanent link:

[http://comizoa.co.kr/info/doku.php?id=application:comiide:tool:servotunes:10\\_feature\\_introduction](http://comizoa.co.kr/info/doku.php?id=application:comiide:tool:servotunes:10_feature_introduction)

Last update: **2024/07/08 18:23**