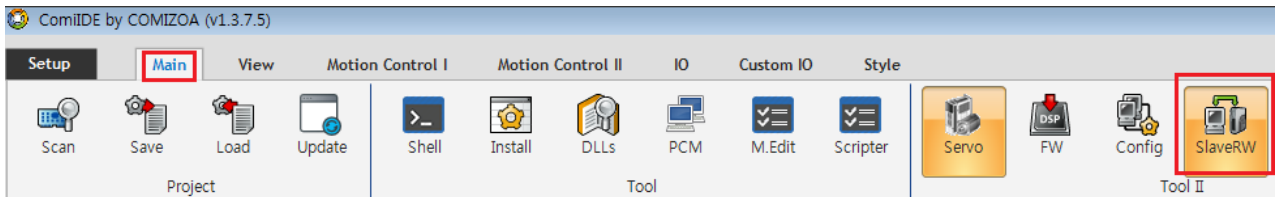


	.....	1
Update	.....	1

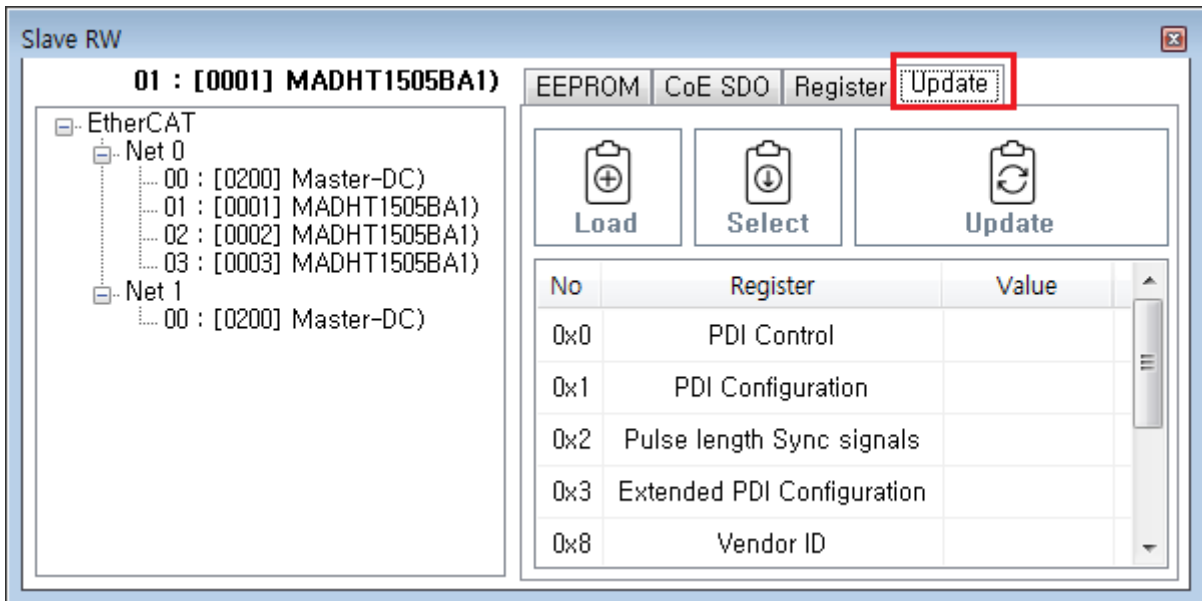
# EEPROM Update

x EtherCAT Slave EEPROM Update

- ComiIDE Main - Tool II SlaveRW SlaveRW

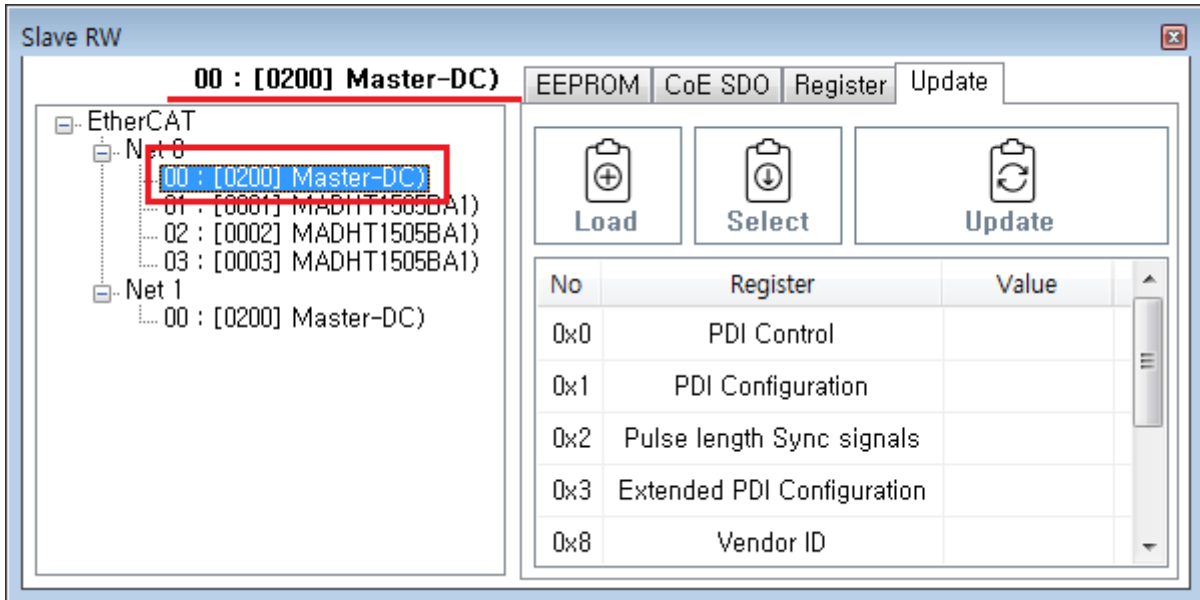


- Update Update

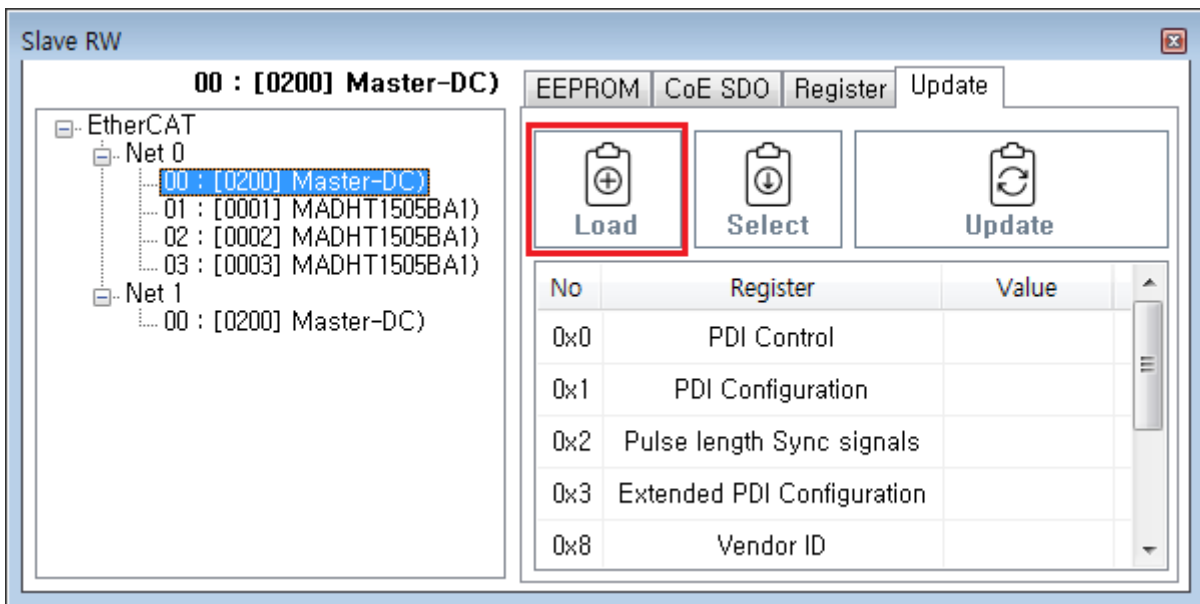


## Update

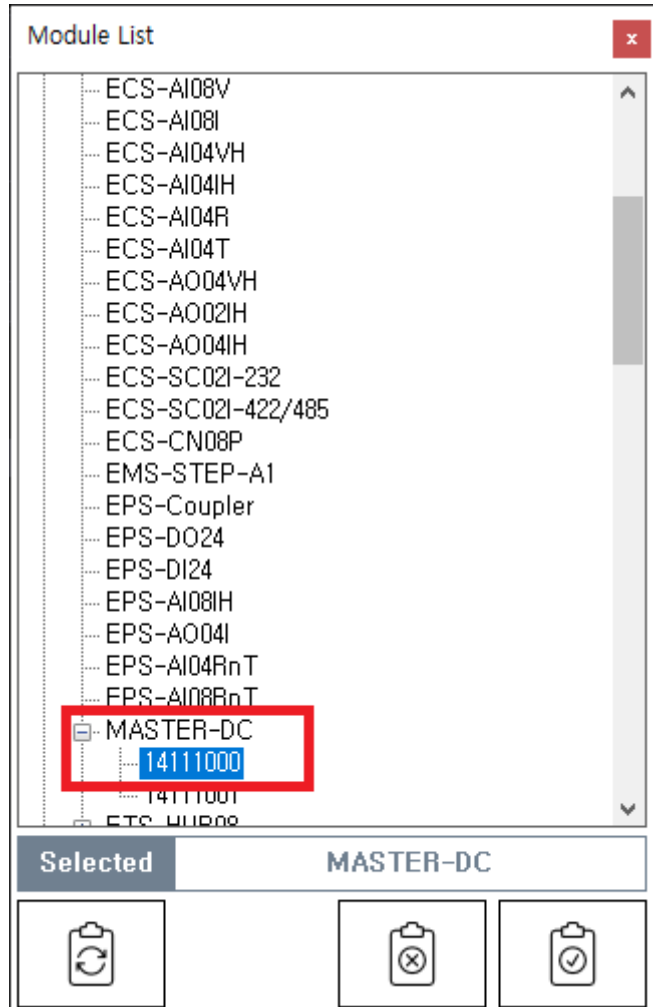
- SlaveList Update Slave MASTER-DC



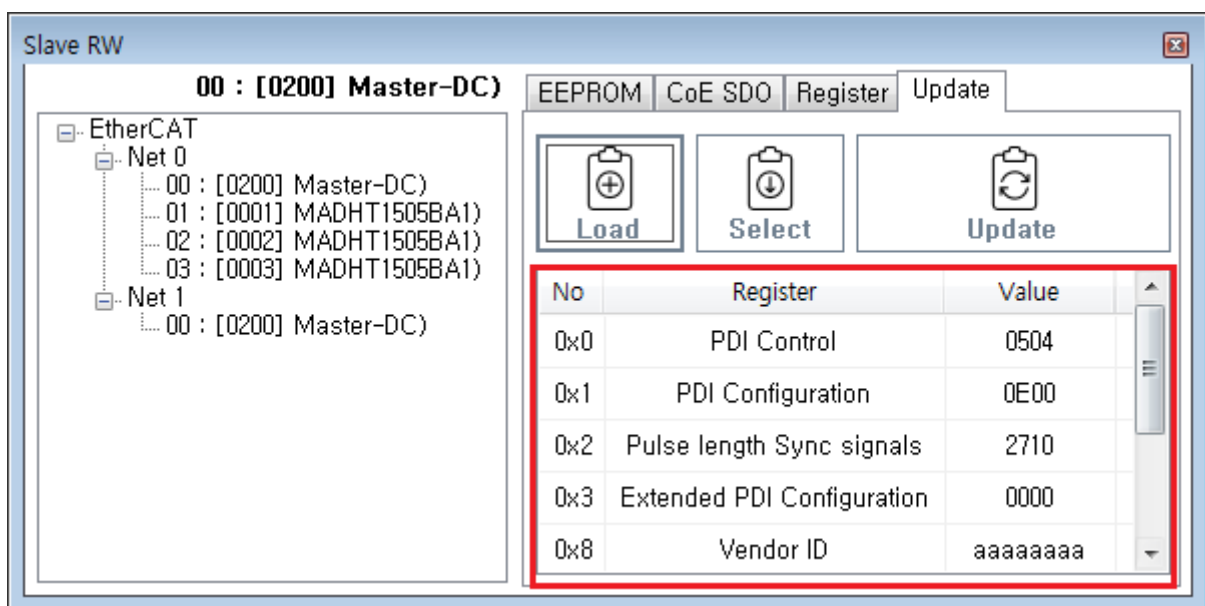
- Load                    slaveList



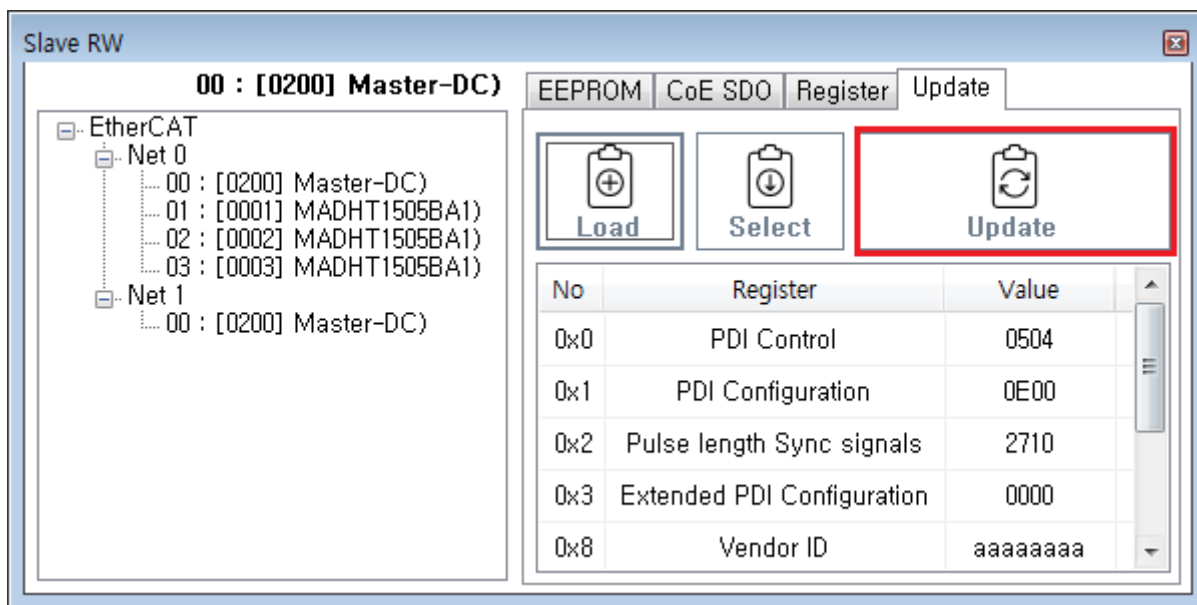
- Slave List            Slave
  - ProductCode가                    , RevisionNo



- Update



- Update Update .



- LogView Update .

LogView interface showing a log entry:

Clear Log Level 1 : Log only when error occur Search

Time	Channel	Code	Command	Info
17:11:47.389	Slave RW	100	<u>EepromUpload</u>	Success

comizoa, ide, ethercat, esc, eeprom, update

From:

<http://comizoa.co.kr/info/> - -

Permanent link:

<http://comizoa.co.kr/info/doku.php?id=application:comiide:tool:slaverw:update>

Last update: **2024/07/08 18:23**