

Table of Contents

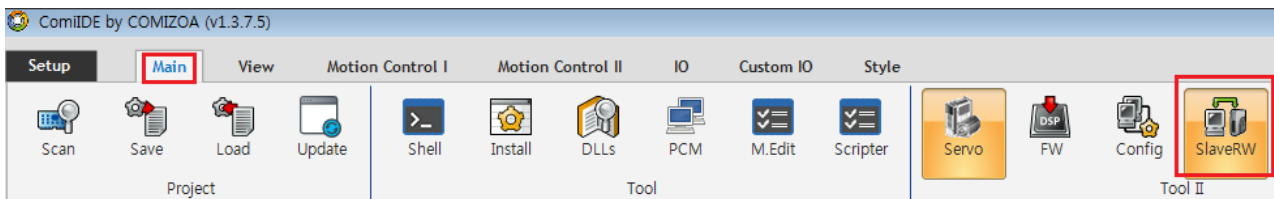
시작하기	1
Update 진행하기	1

EEPROM Update

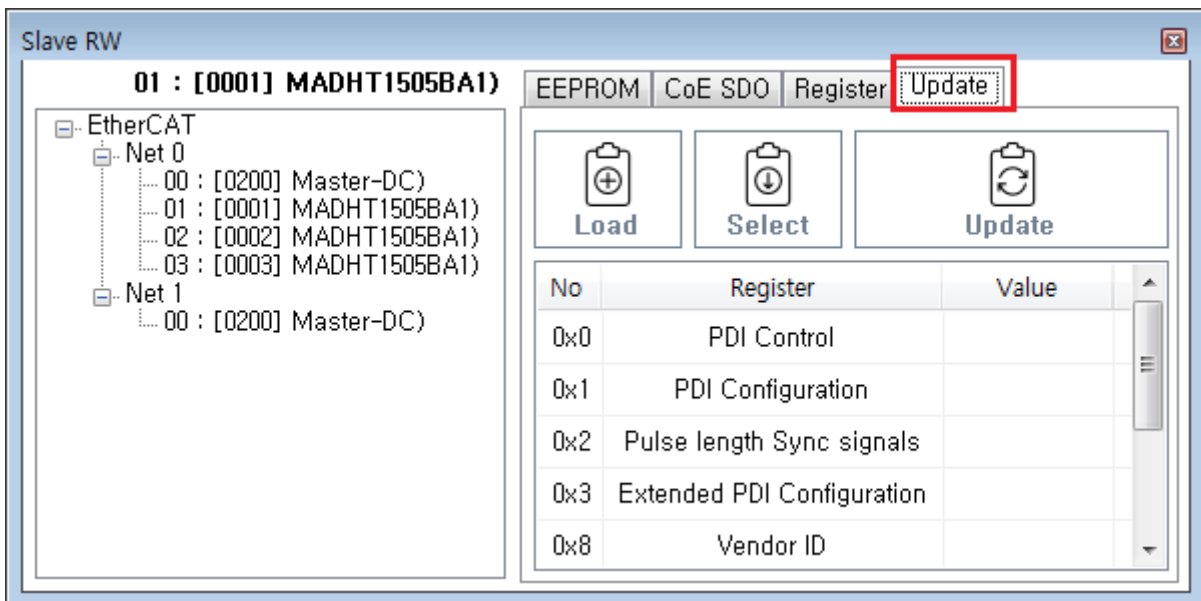
× EtherCAT Slave의 EEPROM Update에 대한 안내 페이지입니다.

시작하기

- ComiIDE의 Main - Tool II SlaveRW 을 클릭하여 SlaveRW를 실행

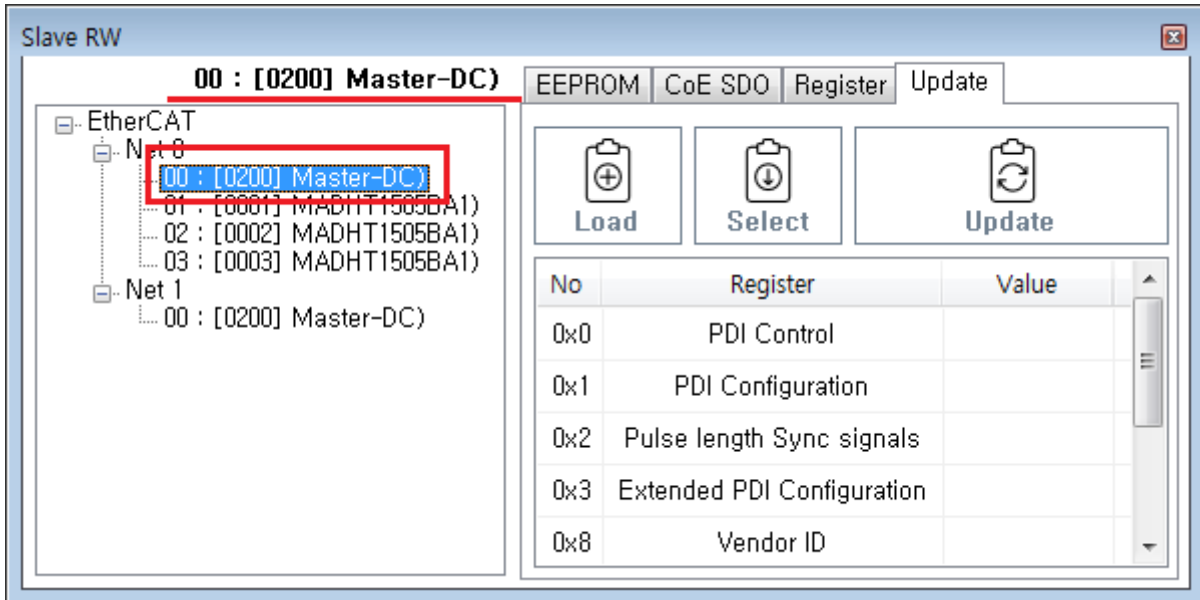


- Update 을 클릭하여 Update 메뉴 실행

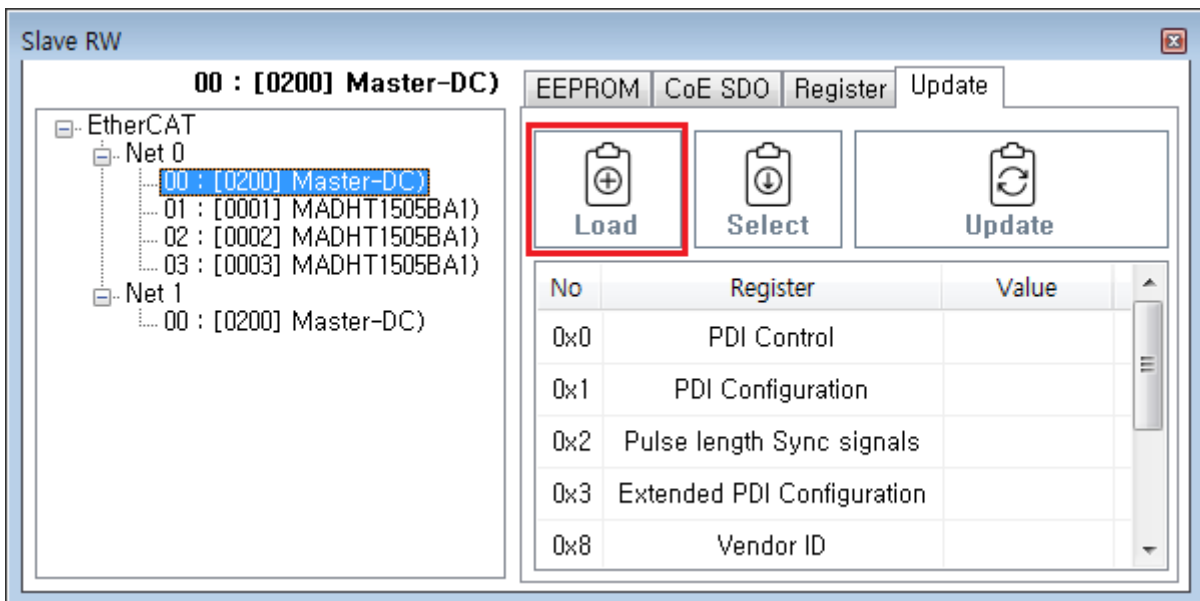


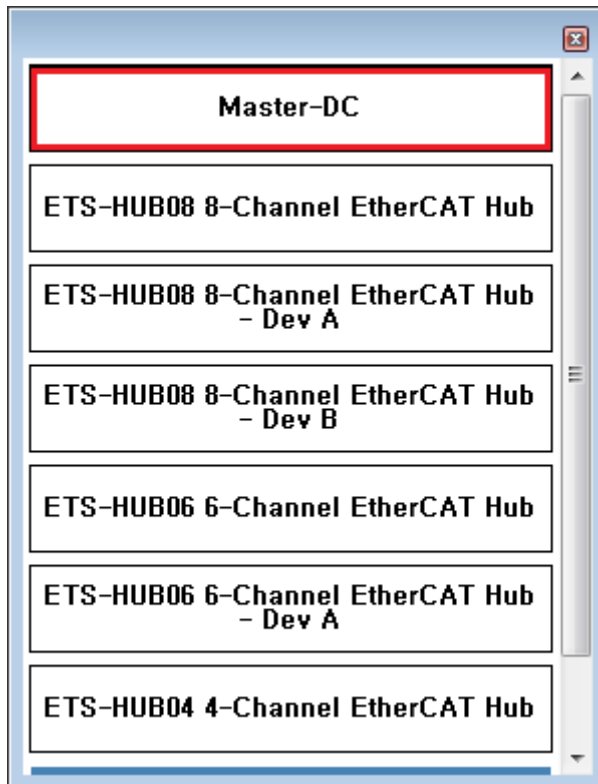
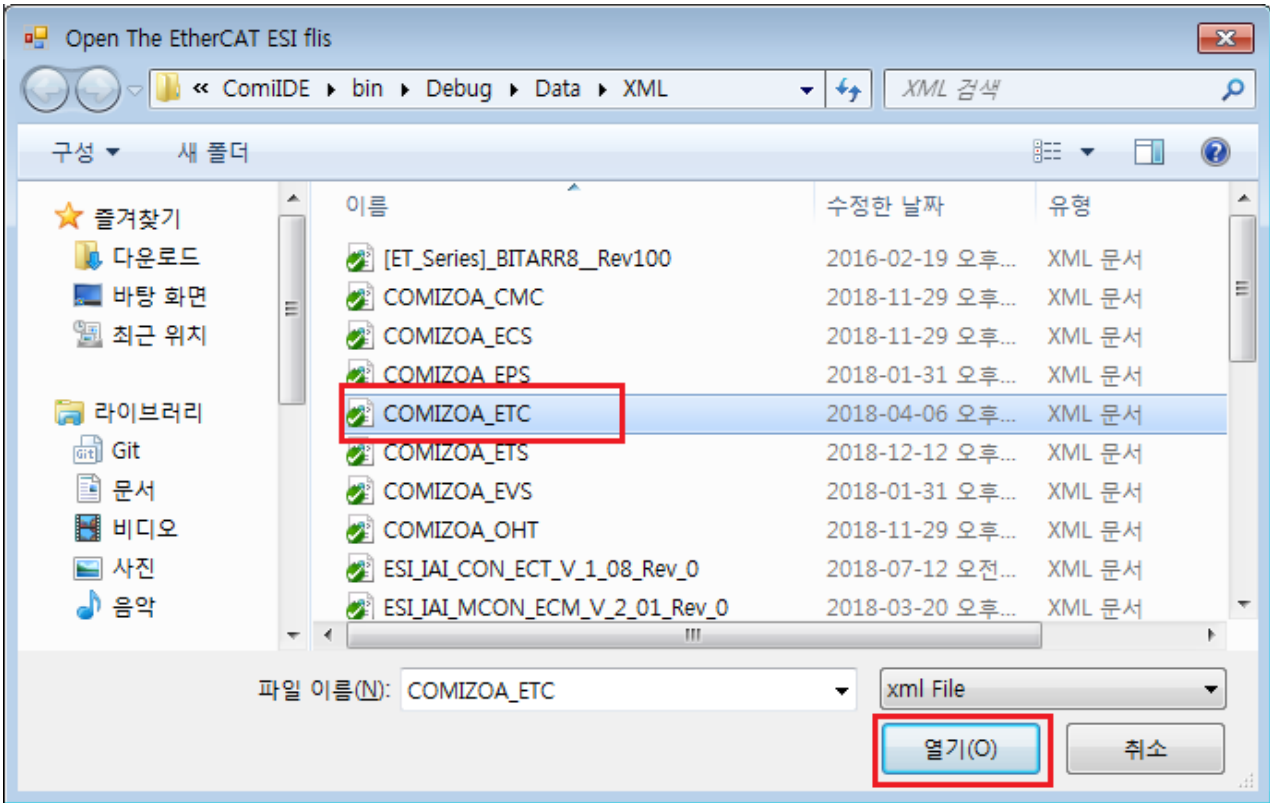
Update 진행하기

- SlaveList 에서 Update 진행할 Slave 선택
 - 이후 안내에서는 MASTER-DC 사용

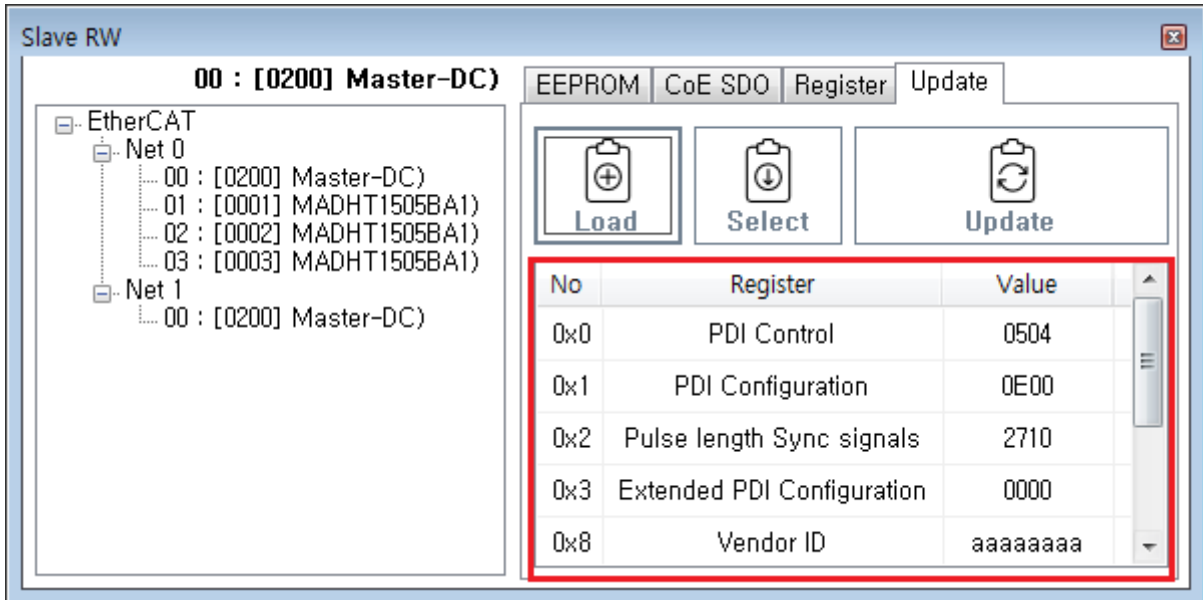


- Load 을 클릭하여 해당 slave의 xml을 선택
- xml에 포함된 Slave List 에서 Slave 선택

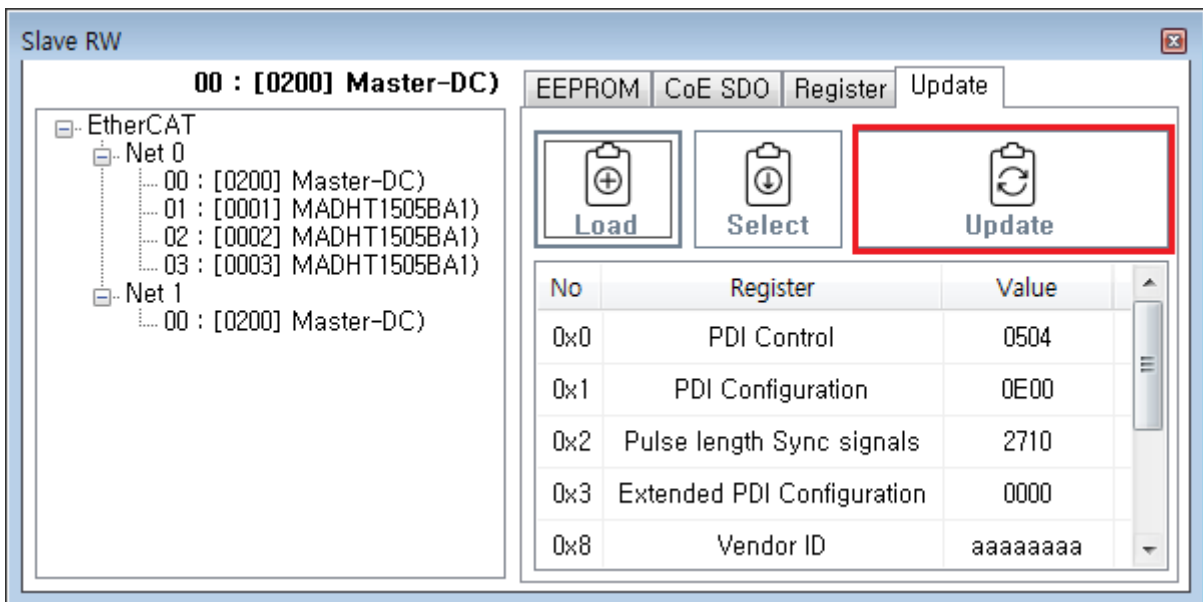




- Update할 정보를 확인합니다.



- Update 을 클릭하여 Update 를 진행합니다.



- LogView 를 통해 Update 성공 여부를 확인합니다.

Time	Channel	Code	Command	Info
17:11:47.389	Slave RW	100	<u>EepromUpload</u>	Success

From:

<http://comizoa.co.kr/info/> - -

Permanent link:

<http://comizoa.co.kr/info/doku.php?id=application:comiide:tool:slaverw:update&rev=1548231904>

Last update: **2024/07/08 18:23**