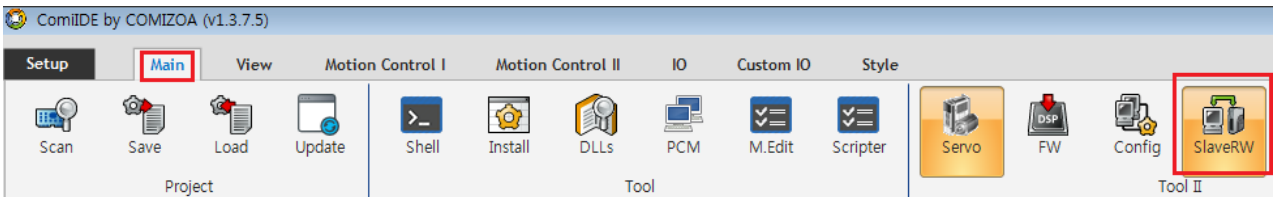


	1
Update	1

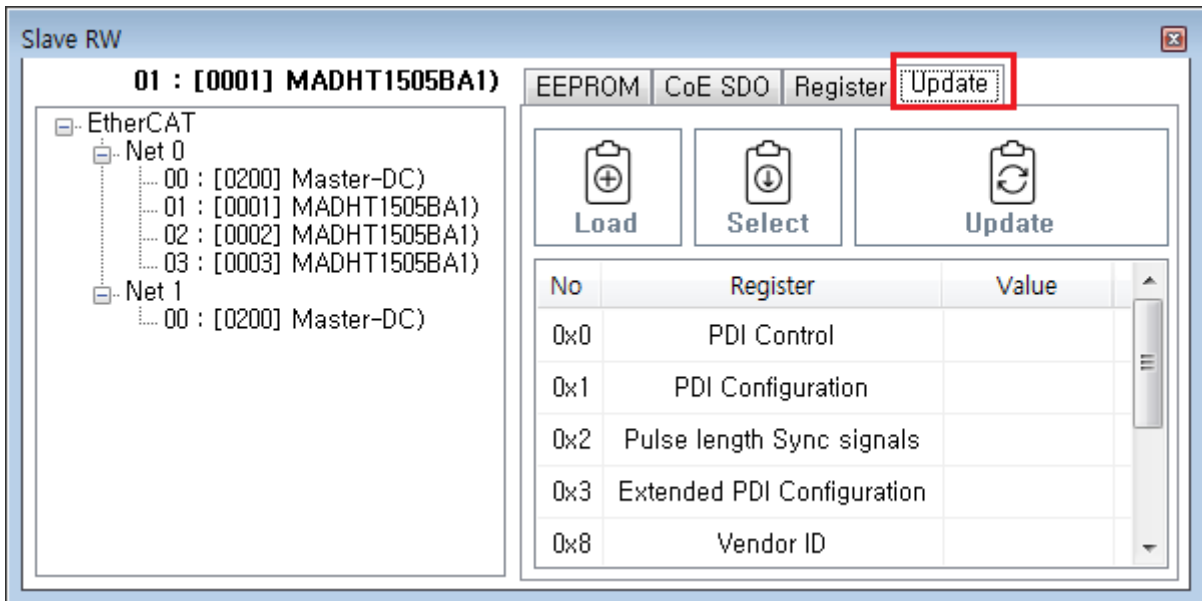
EEPROM Update

x EtherCAT Slave EEPROM Update

- ComiIDE Main - Tool II SlaveRW SlaveRW

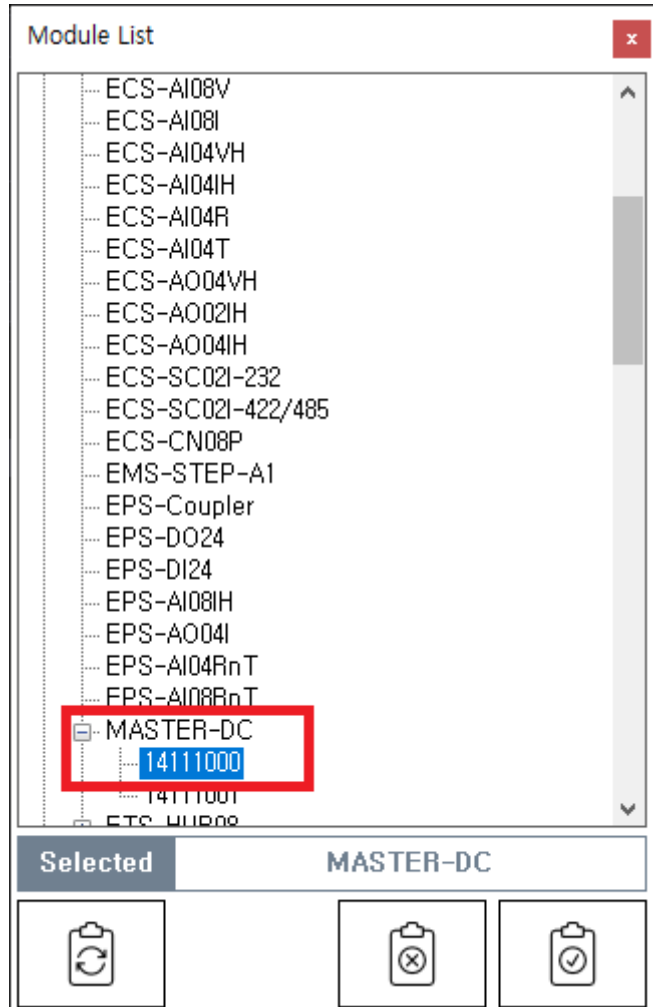


- Update Update

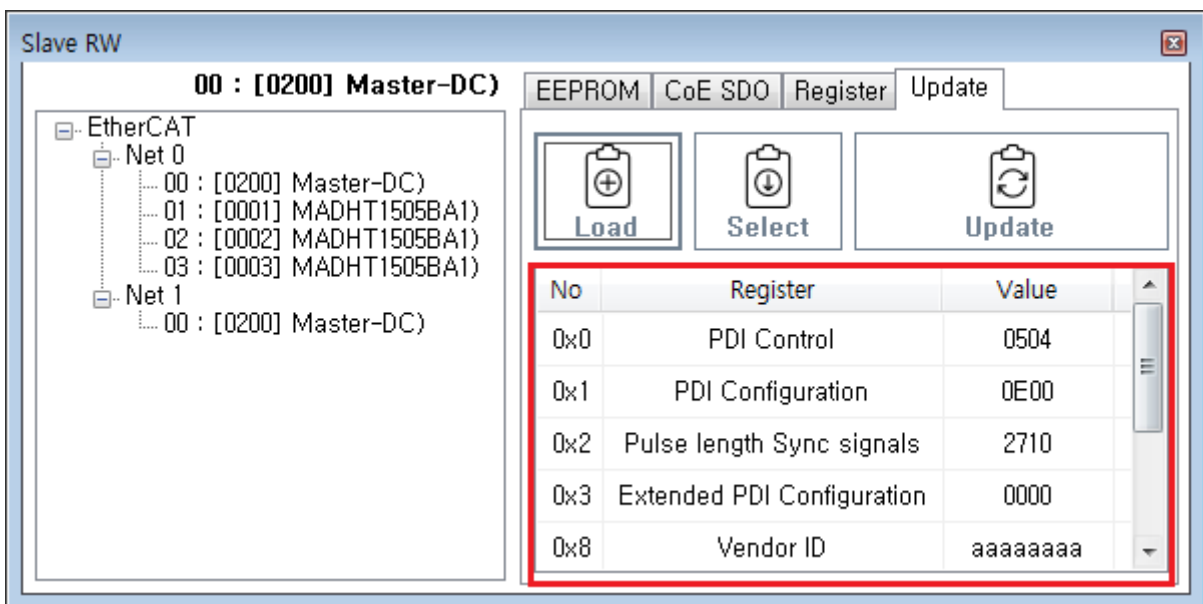


Update

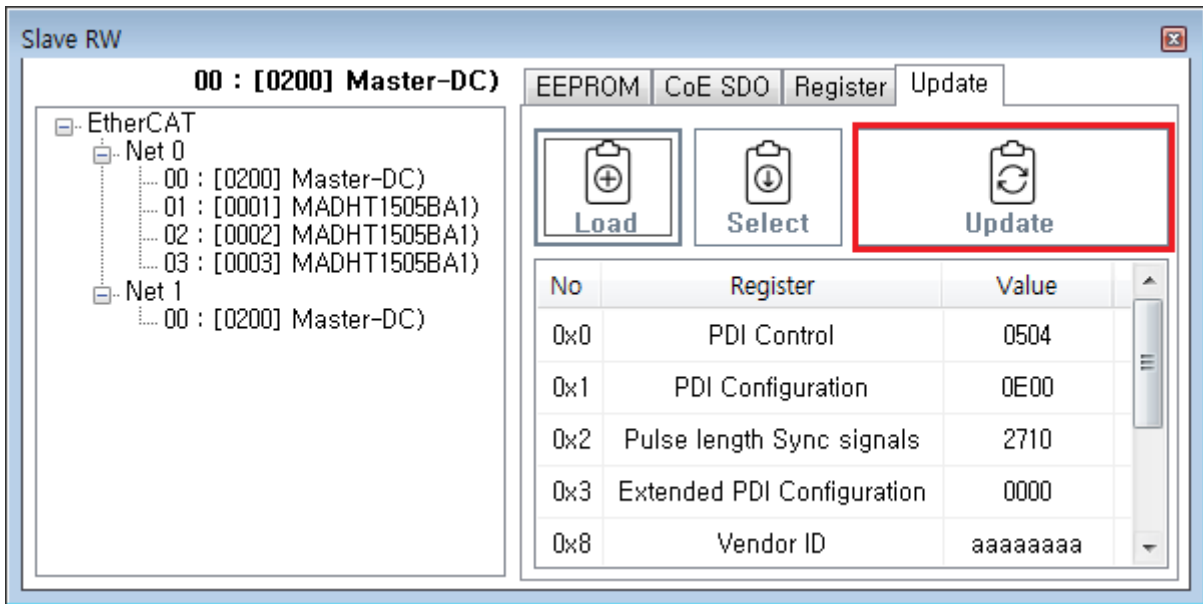
- SlaveList Update Slave MASTER-DC



- Update



- Update Update .



- LogView Update .

LogView interface showing a log entry:

Clear Log Level 1 : Log only when error occur Search

Time	Channel	Code	Command	Info
17:11:47.389	Slave RW	100	<u>EepromUpload</u>	Success

comizoa, ide, ethercat, esc, eeprom, update

From:
<http://comizoa.co.kr/info/> - -
 Permanent link:
<http://comizoa.co.kr/info/doku.php?id=application:comiide:tool:slaverw:update&rev=1611745162>
 Last update: **2024/07/08 18:23**