

..... 1

..... 1

Case 1 ..... 1

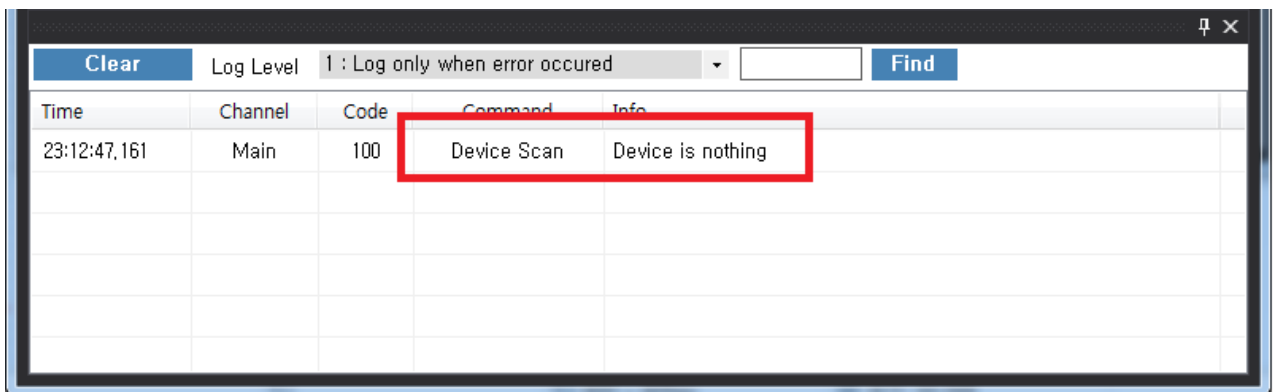
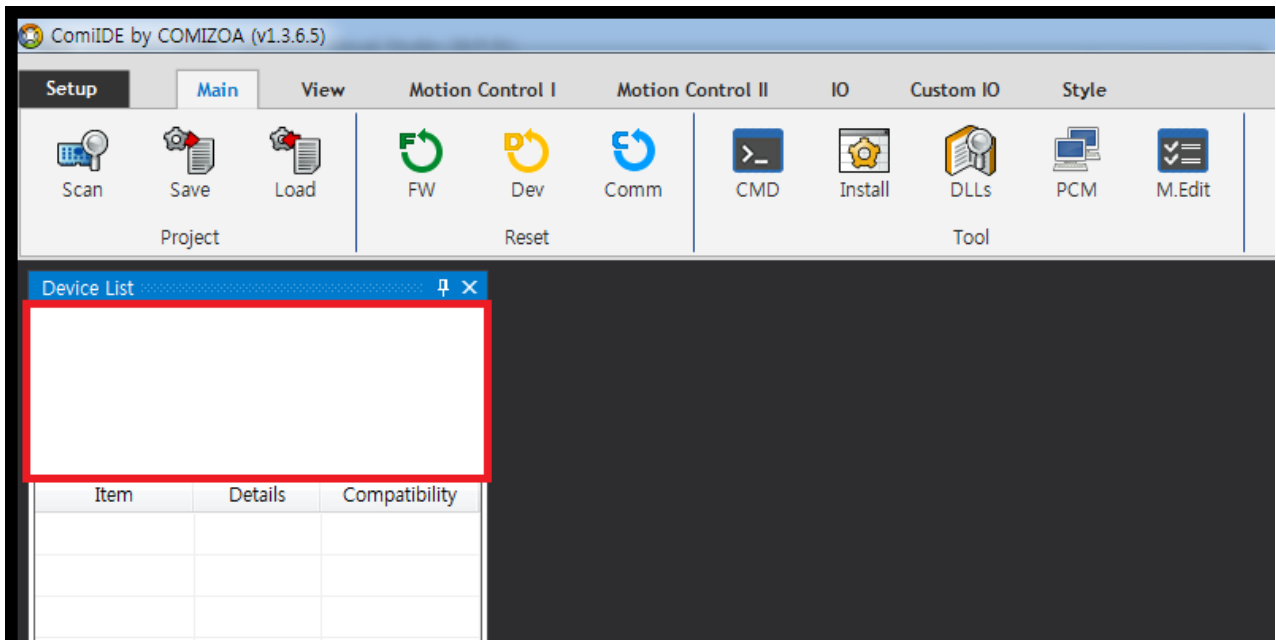
Case 2 ..... 3

Case 3 ..... 3

Case 4 ..... 4

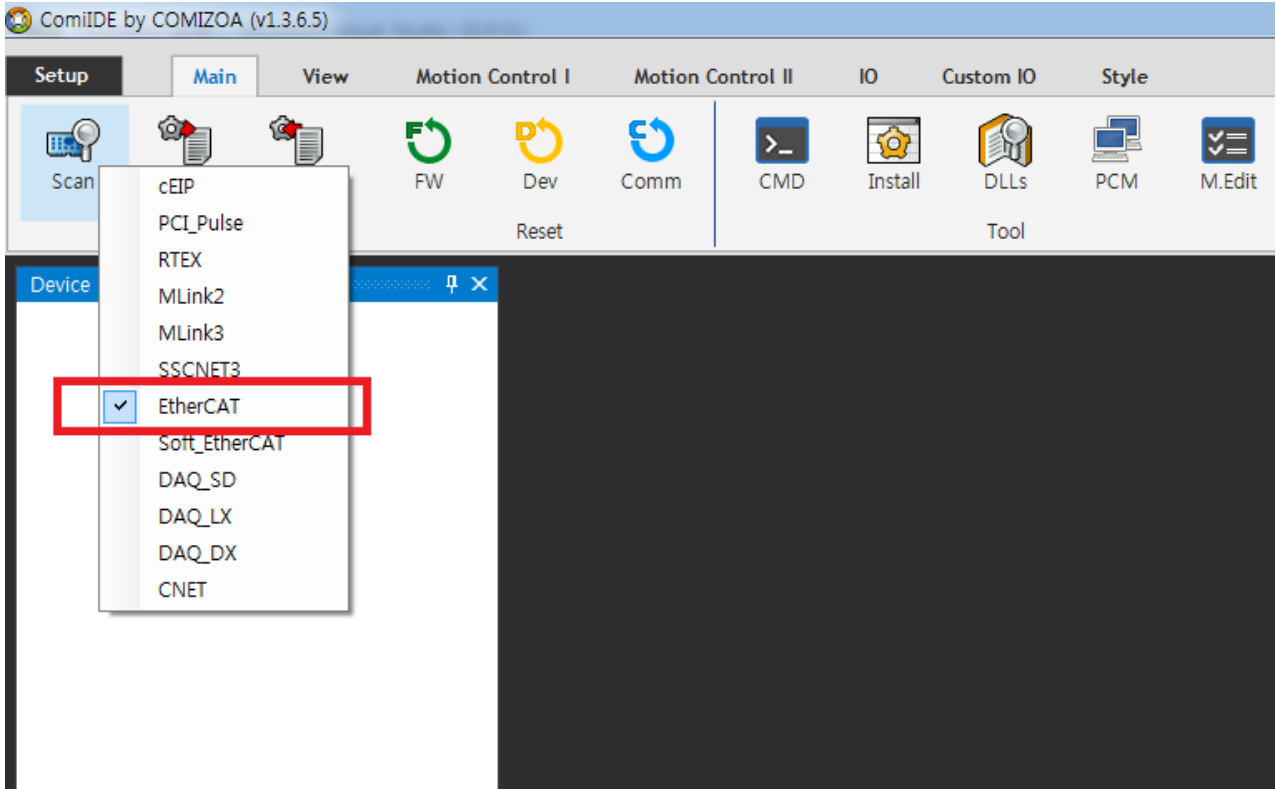
Case 5 ..... 4

× ComilDE      Application      Device가

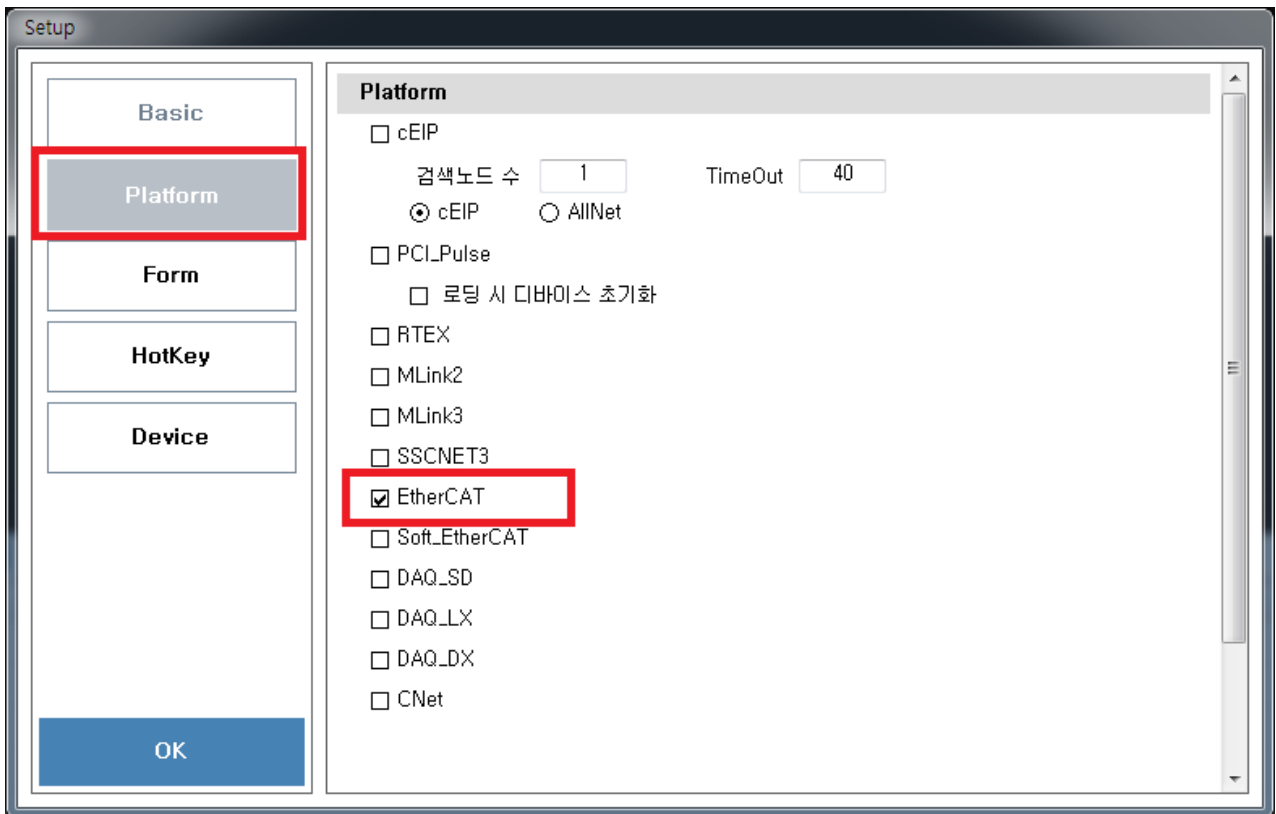


### Case 1

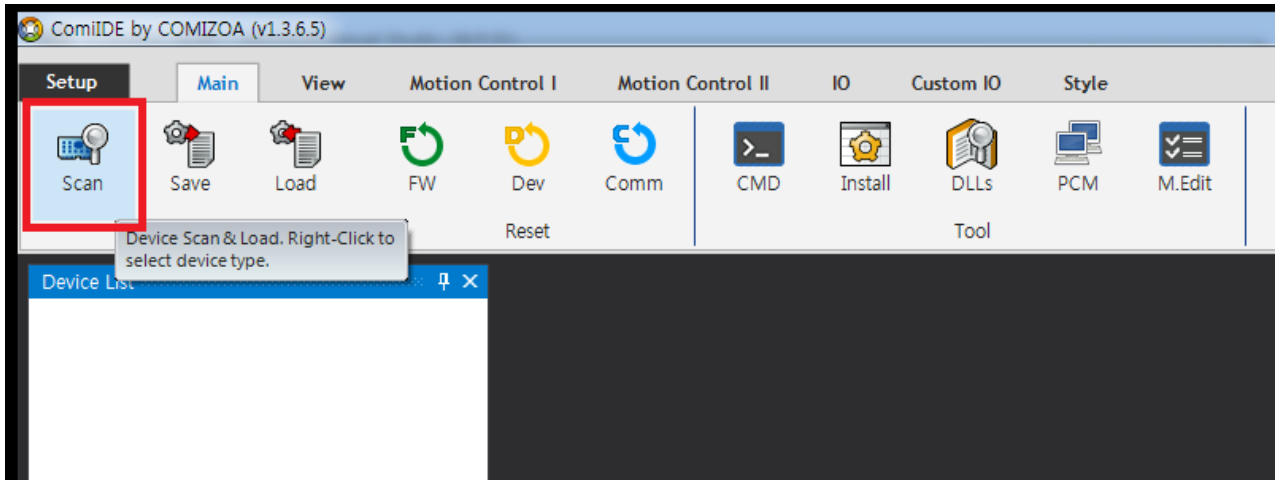
- ComilDE      Platform
- ComilDE      Platform
  - 'Scan'      Platform



- 'Setup'                      'Device' Tab              Platform



- 'Scan'                      SCAN



### Case 2

- Driver 가

Time	Channel	Code	Command	Info
00:15:04,567	EtherCAT	100	Driver Check	Driver is not installed
00:15:05,747	Main	100	Device Scan	Device is nothing

- **Driver**

### Case 3

- DLL (Library)

Time	Channel	Code	Command	Info
00:50:38,542	EtherCAT	100	DLL Check	DLL not found : ComiEcatSdk,DLL
00:50:39,735	Main	100	Device Scan	Device is nothing

- **DLL**

### Case 4

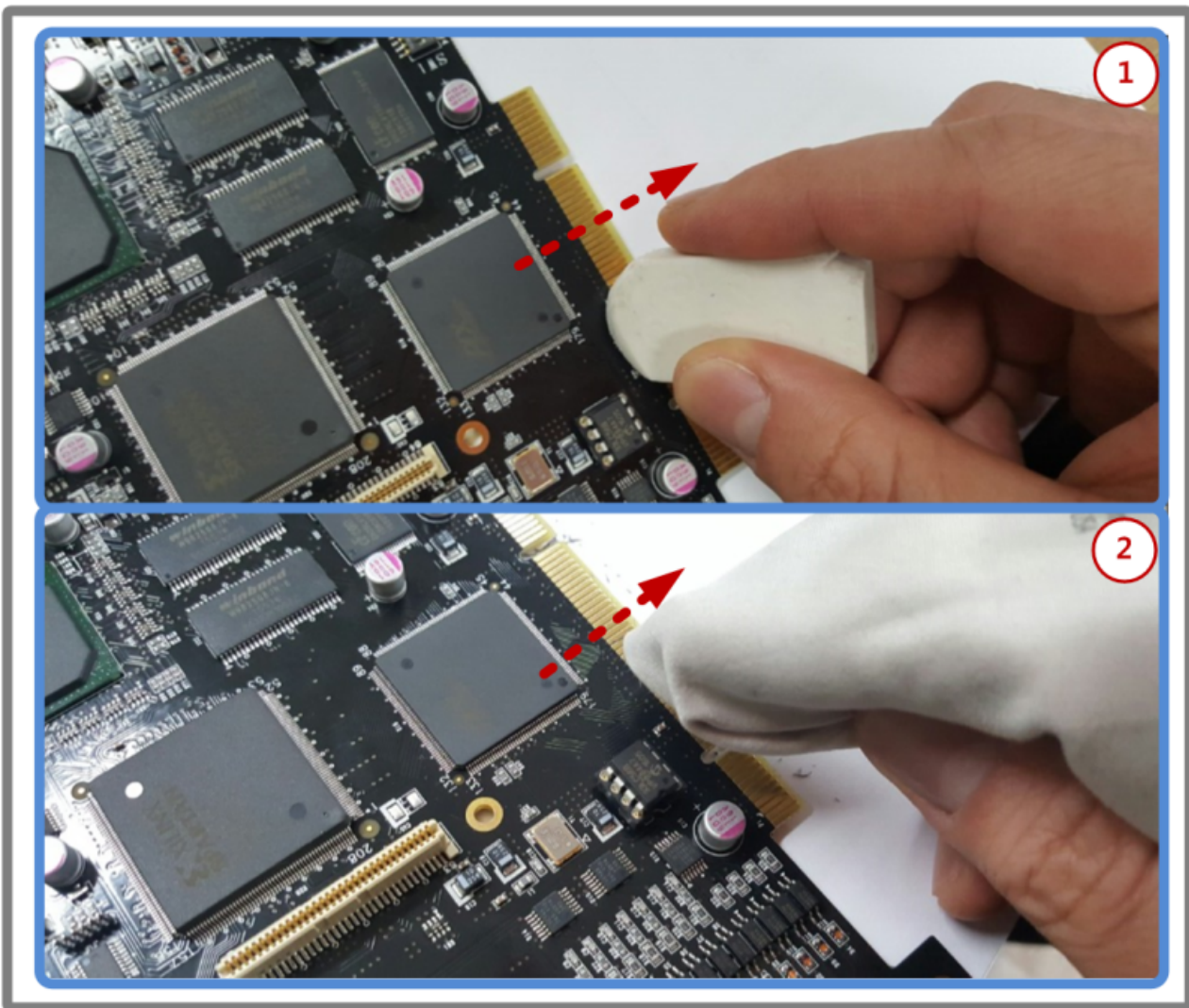
- (OS : x86 / x64)                      DLL

Time	Channel	Code	Command	Info
09:19:10,649	EtherCAT	100	DLL Check	Check the ComiEcatSdk,dll. It does not match the version of OS
09:19:11,833	Main	100	Device Scan	Device is nothing

- x64 OS                      x86 DLL
- x86 OS                      x64 DLL
- ComilDE                      x86 OS                      x86                      , X64 OS                      x64                      , DLL                      OS
- DLL
- x64 OS                      x86 DLL                      x86                      ComilDE                      1)

### Case 5

- Driver가
- PCI Slot , 가 .
- PCI Slot
- PCI Slot



- PCI
- PCI
- PCI

1)

DLL C:\Windows\SysWow64

From:

<http://comizoa.co.kr/info/> - -

Permanent link:

[http://comizoa.co.kr/info/doku.php?id=application:comiide:troubleshooting:device\\_scan\\_failed](http://comizoa.co.kr/info/doku.php?id=application:comiide:troubleshooting:device_scan_failed)

Last update: **2024/07/08 18:23**