

Step 1. cEIP IP, ID ..... 1  
Step 2. cEIP ..... 2  
Step 3. PC Daemon IP ..... 2  
Step 4. Daemon ..... 5  
Step 5. .... 8  
See Also ..... 10

# cEIP Setup

x cEIP

## Step 1. cEIP IP, ID



- cEIP

### IP

- MSB IP 4 , LSB 4
- MSB가 1, LSB가 F 0x1, 0xF
- IP 192.168.1.31(0x1F) IP가 . 0x01 ~ 0xFE

### IP

- ID 0~9 가
- ID ID 가

### Step 2. cEIP

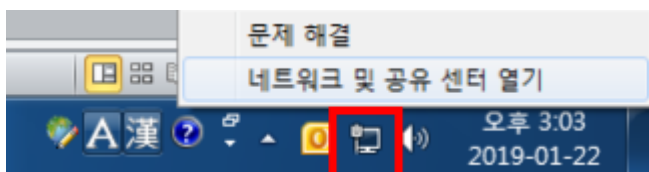


- cEIP

P LED

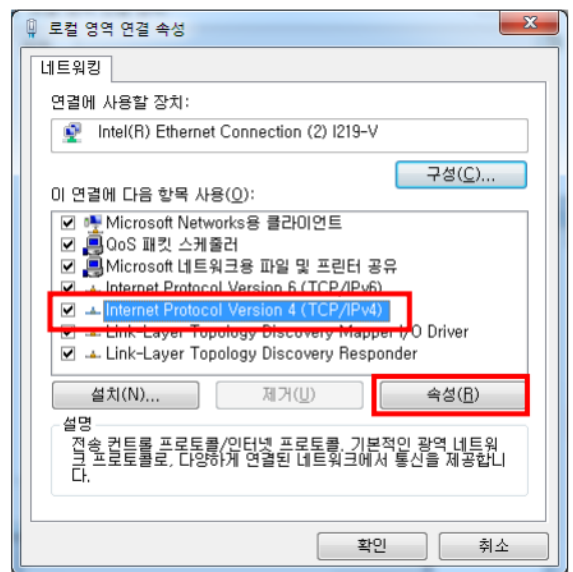
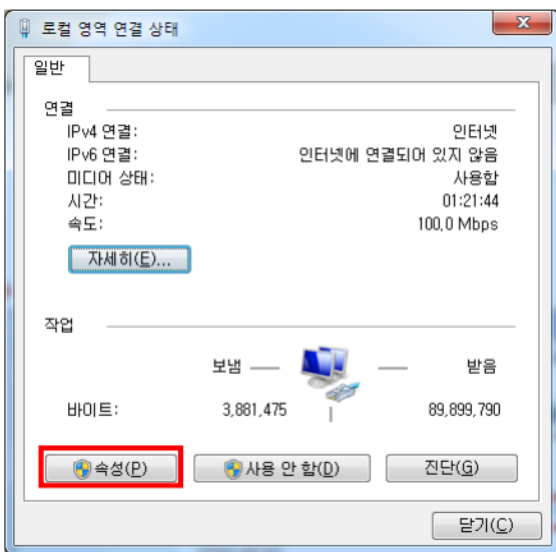
ON, A LED

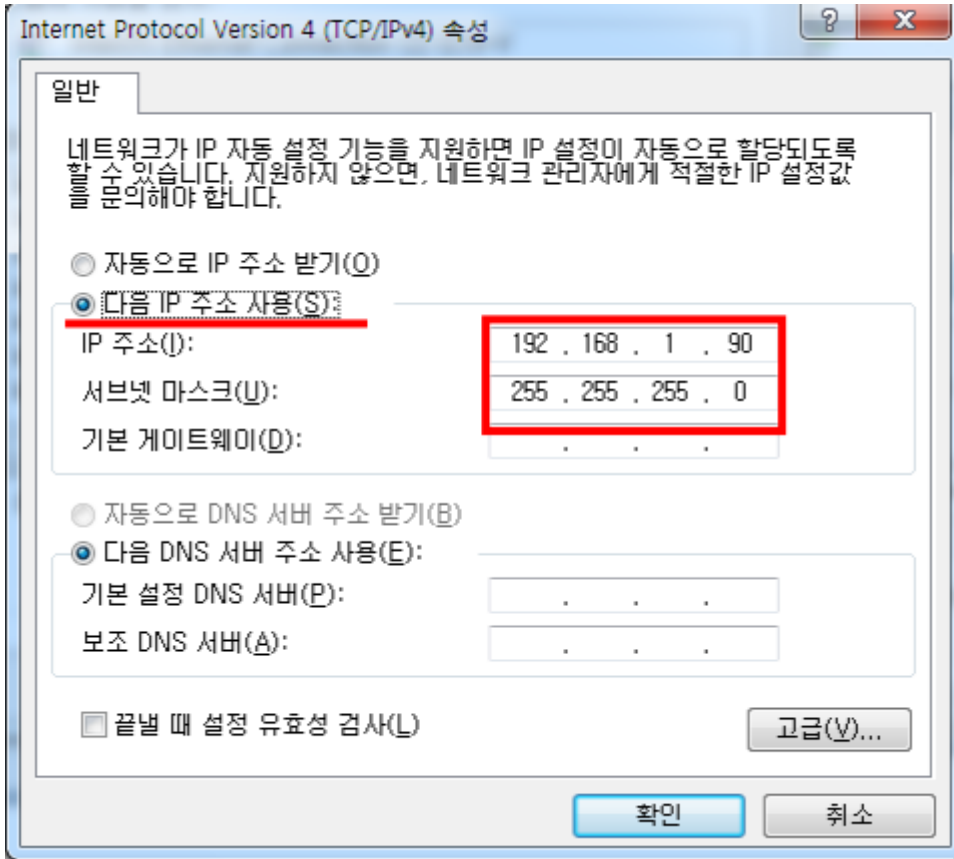
### Step 3. PC Daemon IP





• [ - [ ] - [ ] ] - cEIP

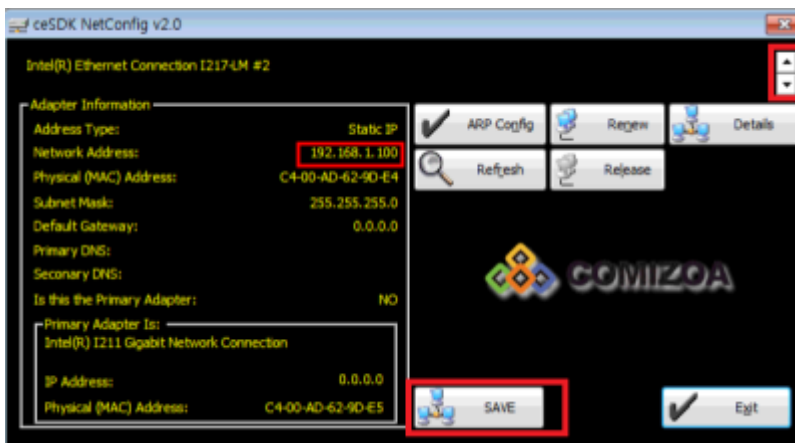




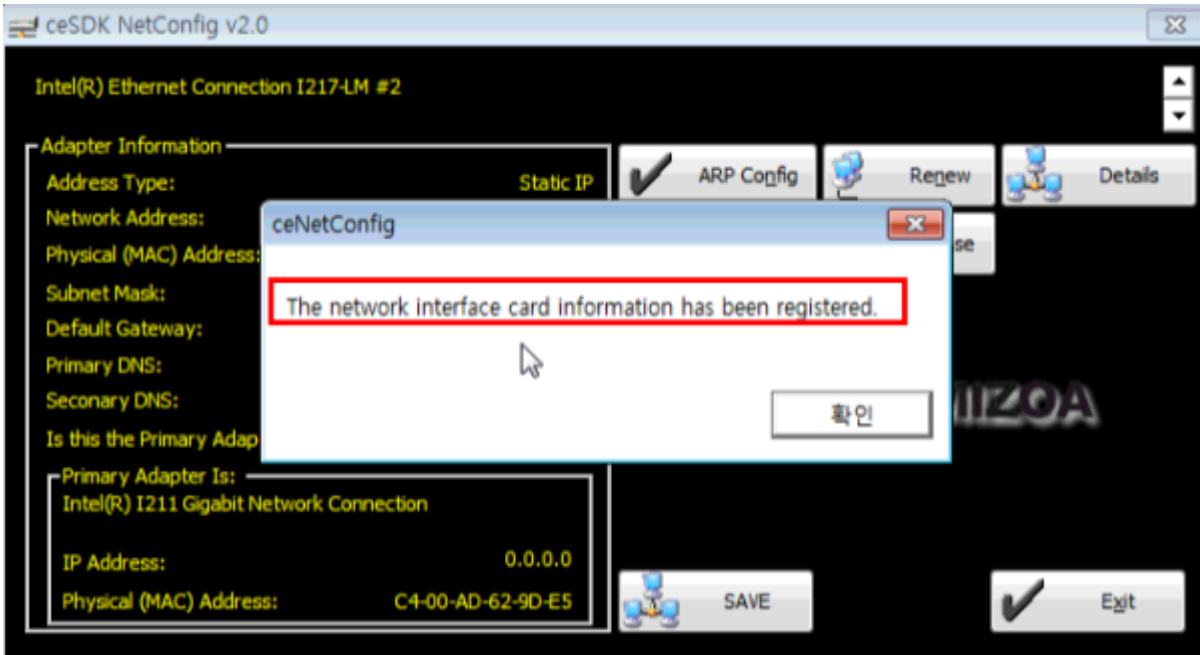
- 192.168.1.1 ~ 192.168.1.254 IP

File Name	Date and Time	Type	Size
VersionManager	2021-10-28 오후 3:36	파일 폴더	
ceNetConfig.exe	2011-03-08 오전 11:06	응용 프로그램	423KB
ceSDKDLL.dll	2019-02-22 오전 9:46	응용 프로그램 확장	3,045KB
CmeBuilder.exe	2015-05-21 오후 2:42	응용 프로그램	3,169KB
DIChecker.exe	2021-02-05 오후 1:13	응용 프로그램	22KB
MADIC.exe	2019-04-05 오후 4:49	응용 프로그램	2,849KB
RDLLMFC.dll	2009-06-09 오후 1:19	응용 프로그램 확장	32KB
VelocityGraph.exe	2013-10-31 오후 2:19	응용 프로그램	1,429KB

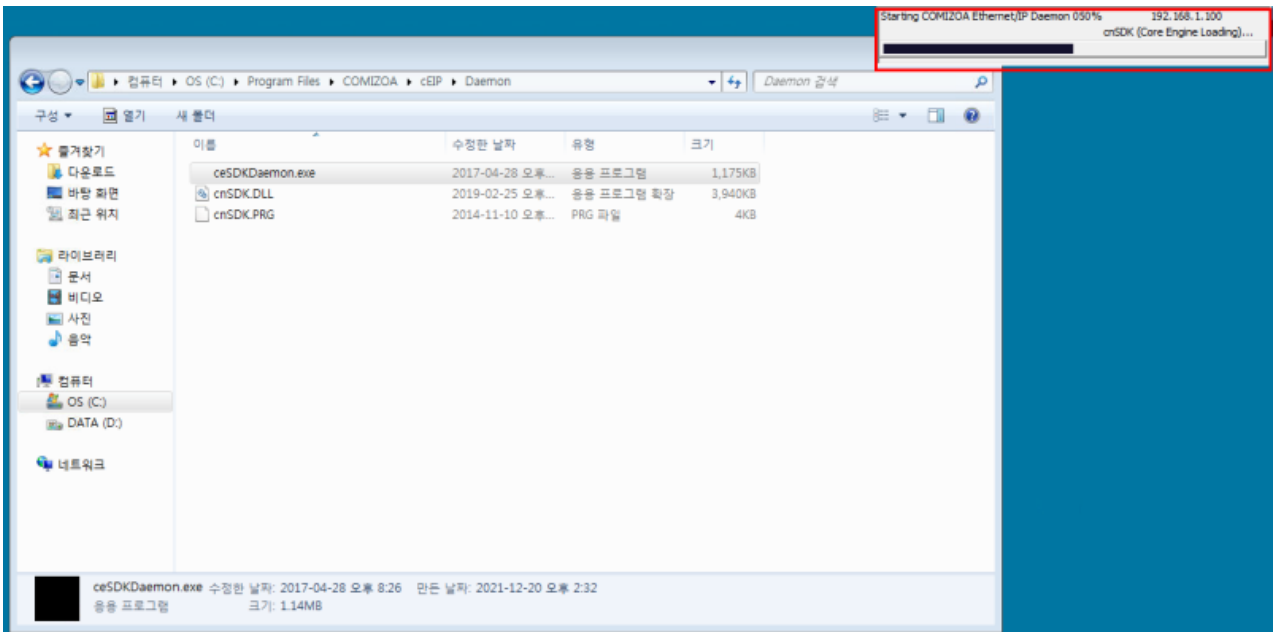
- cEIP ceNetConfig.exe



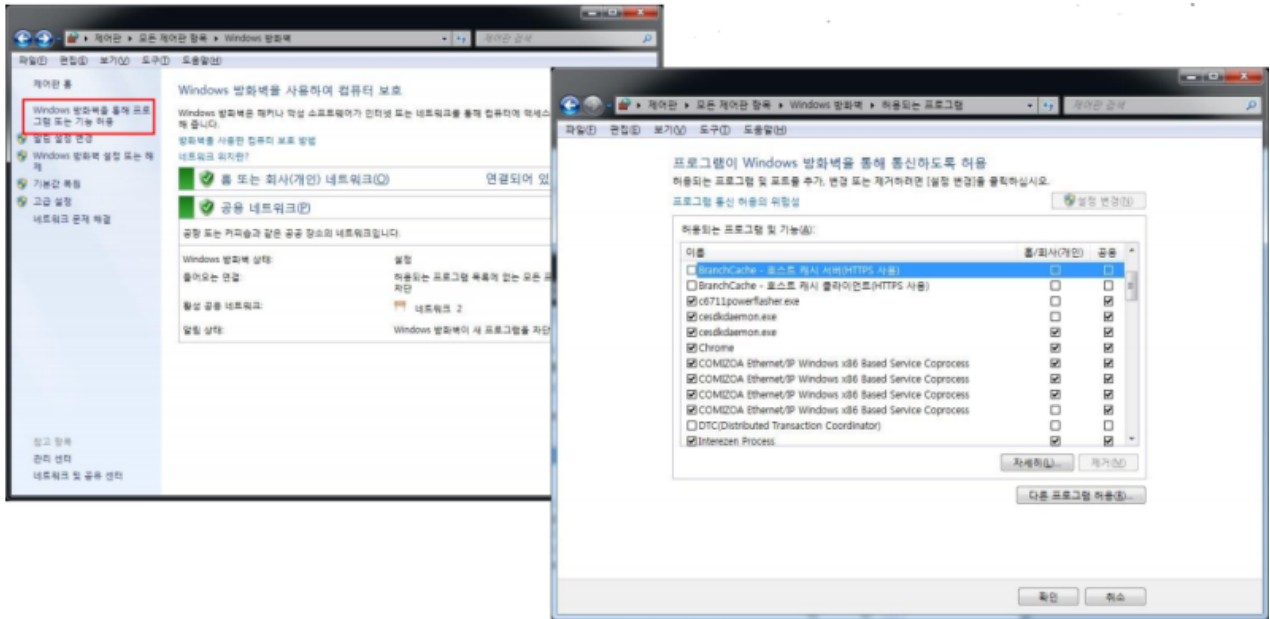
- IP
- IP가 Save



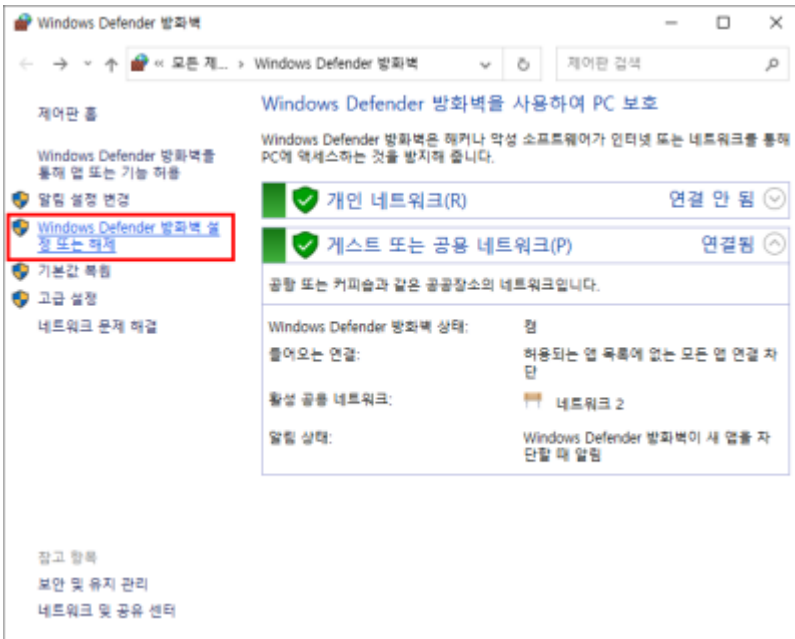
### Step 4. Daemon



- cEIP                    ceSDKDaemon.exe
- IP가



- -
1. C6711powerflasher.exe(ceMN-IP , )
  2. Cesdkdaemon.exe
  3. COMIZOA Ethernet/IP Windows x86 Based Service Coprocess

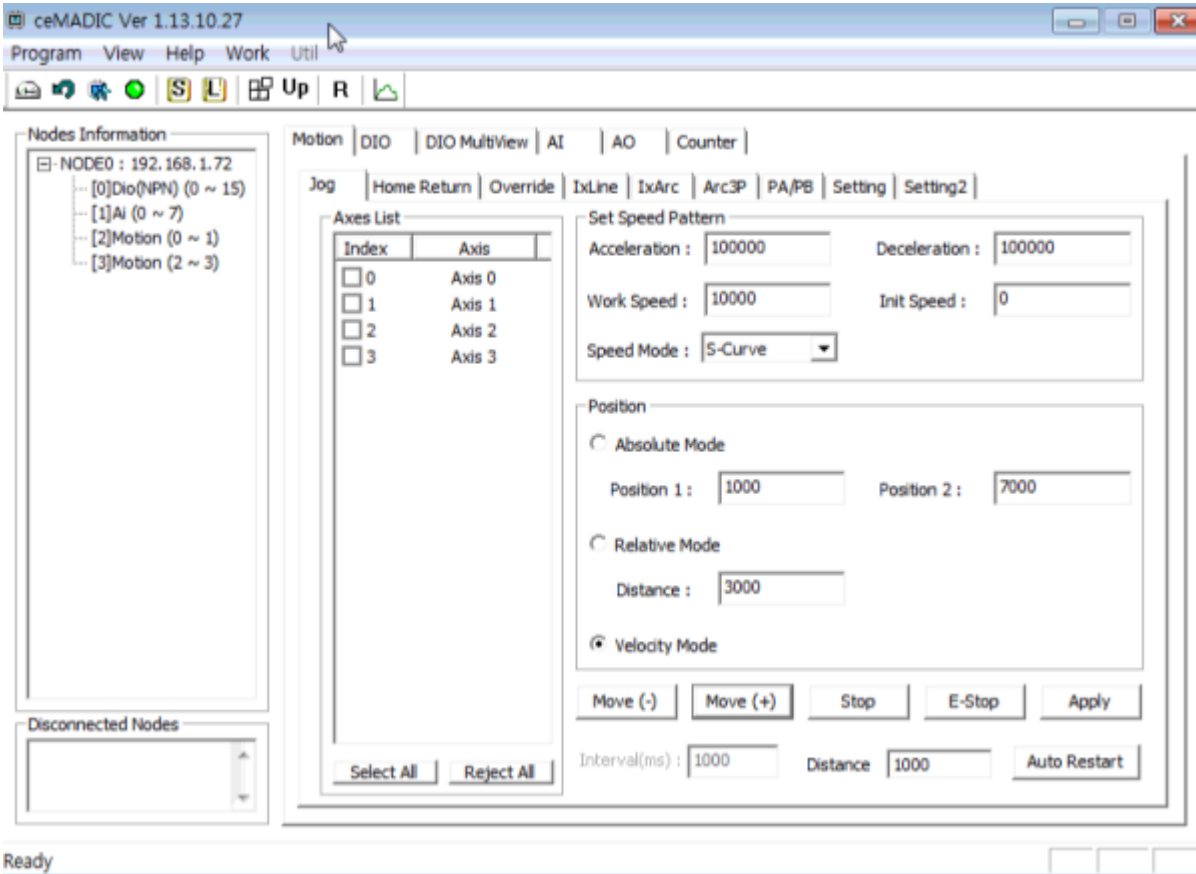






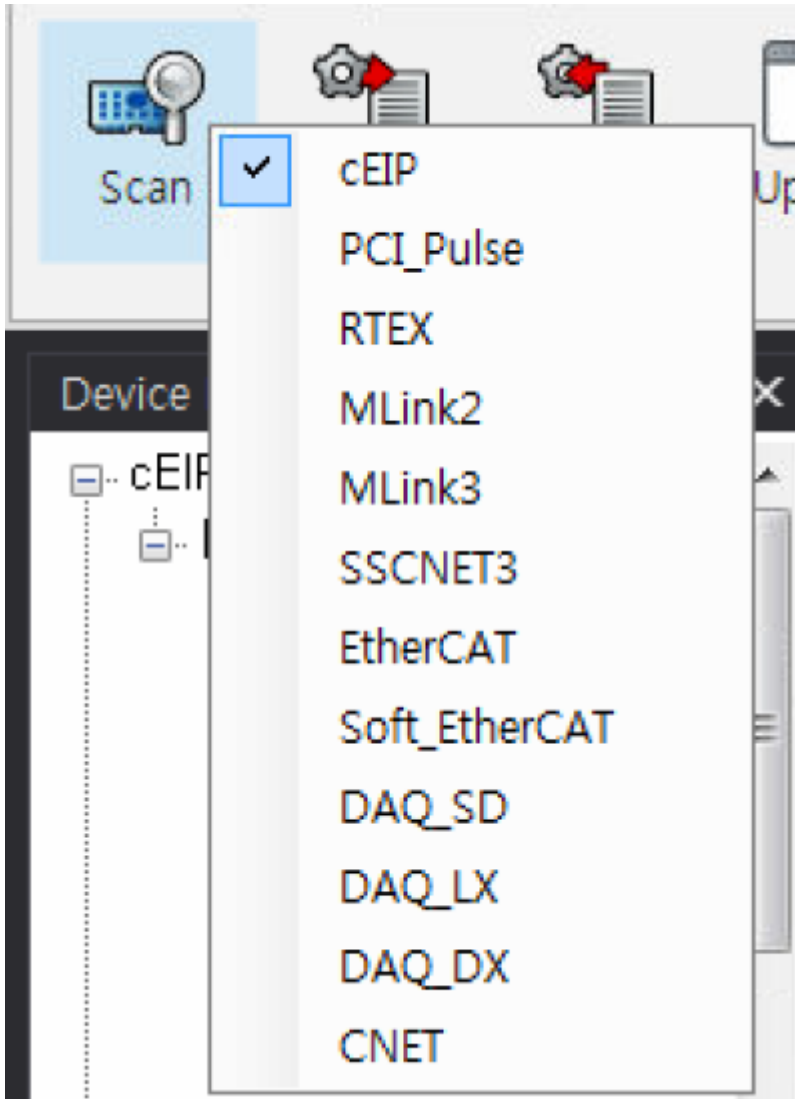
### Step 5.

#### MADIC

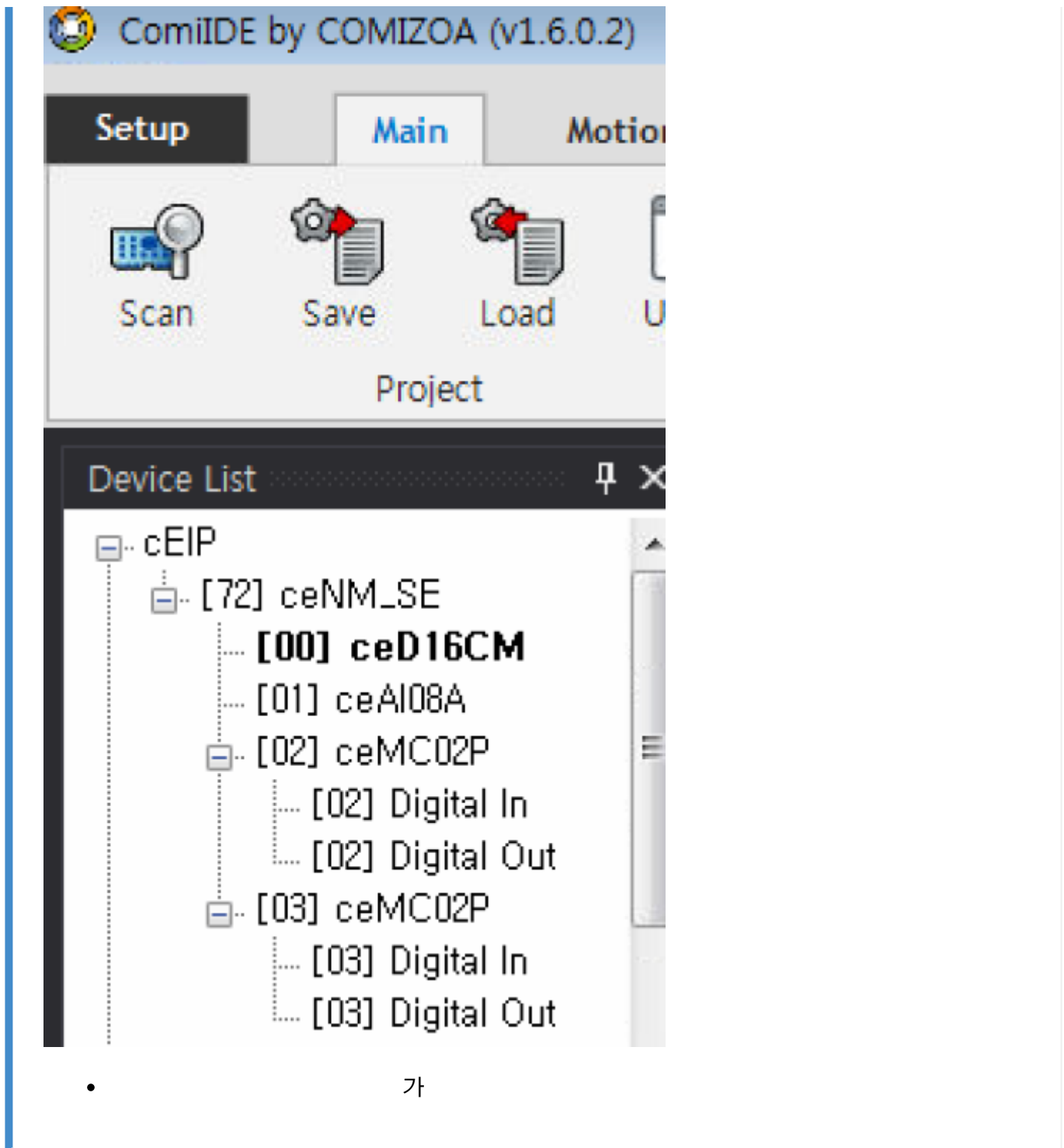


- MADIC
- 가

#### ComiIDE



- ComilDE      Scan      cEIP



**See Also**

[cEIP](#)

[cEIP](#)      [가](#)

1)

From:

<http://comizoa.co.kr/info/> - -

Permanent link:

[http://comizoa.co.kr/info/doku.php?id=faq:downloadandsetup:ceip:00\\_ceip\\_setup&rev=1640222602](http://comizoa.co.kr/info/doku.php?id=faq:downloadandsetup:ceip:00_ceip_setup&rev=1640222602)

Last update: **2024/07/08 18:22**