

C# Visual Studio

× C# Visual Studio

* : Visual Studio 2010

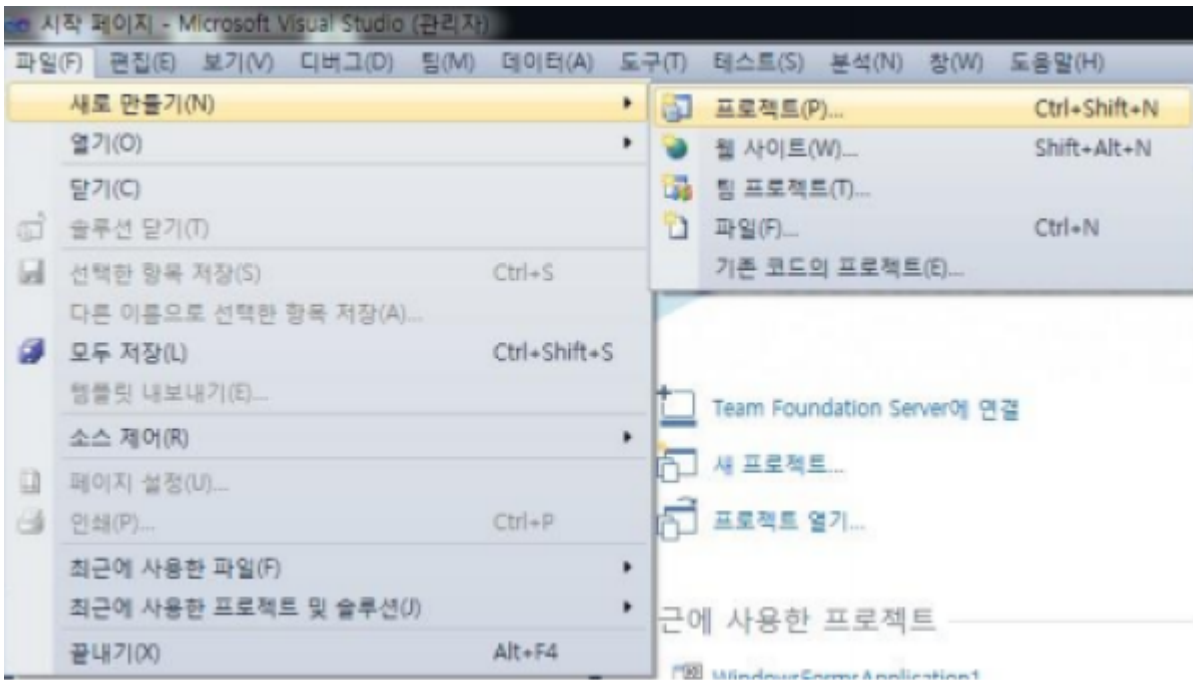
* Motion

* 가

* DLL

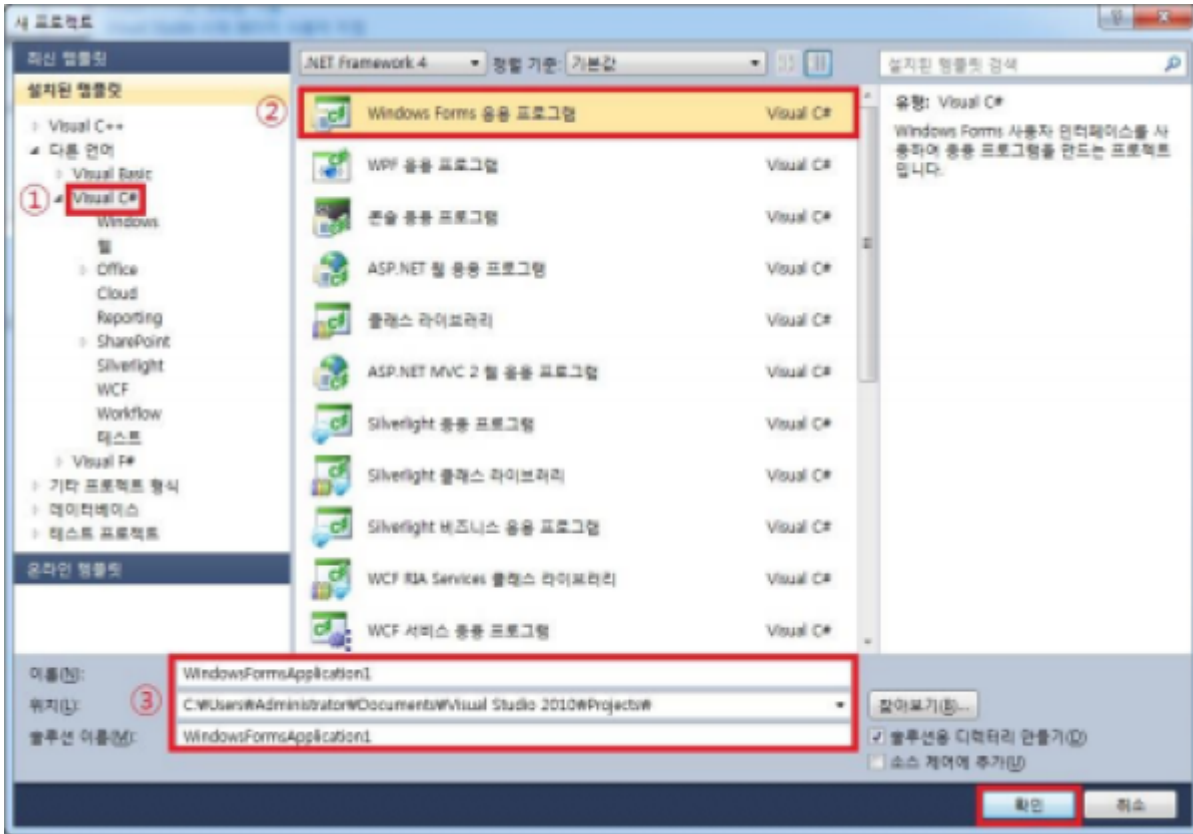
1 Visual Studio 2010

* Visual Studio 2010 (: **ctrl** + **shift** + **N**)

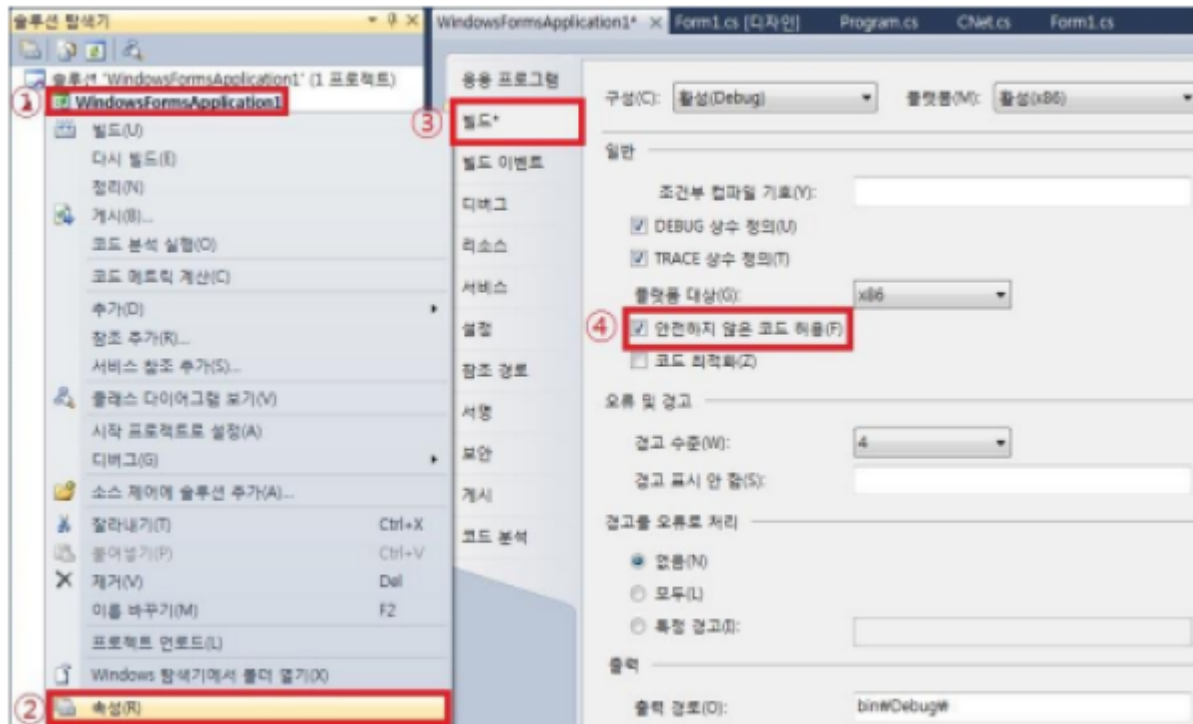


2 Window Forms

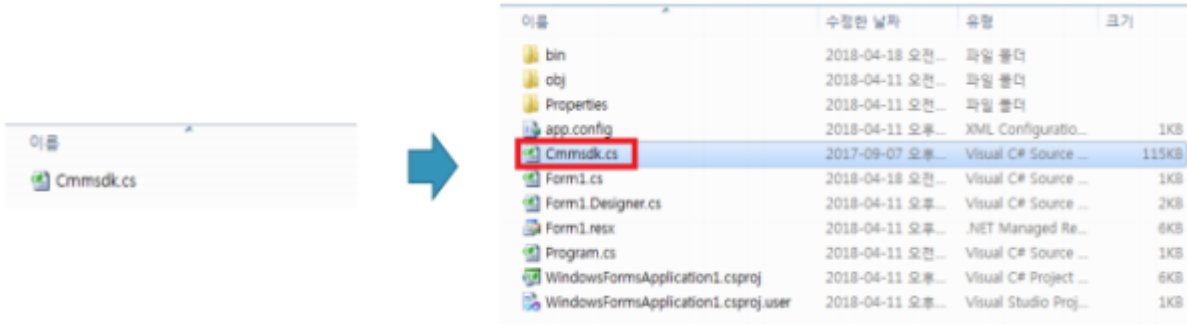
-



3



4



1)CNET
- Cnet.cs

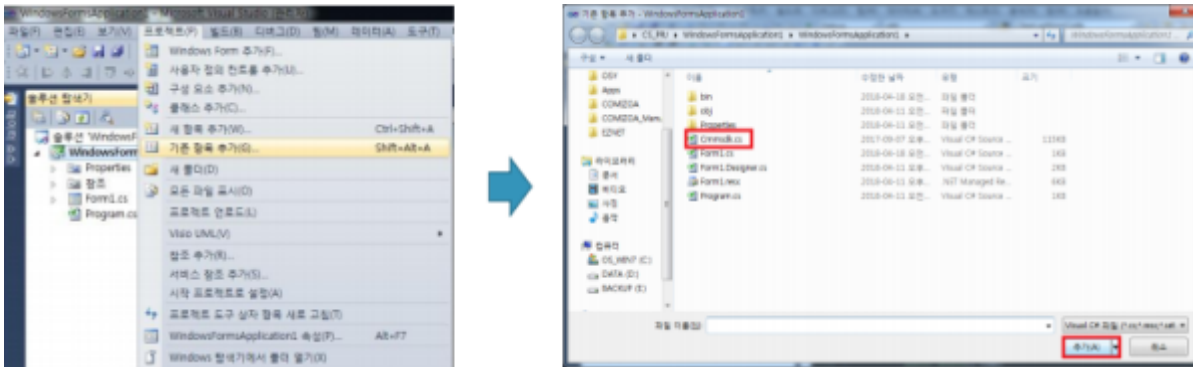
2)Motion
- Cmmsdk.cs

3)DAQ
- Comidas.cs

4)cEIP
- ceSDK.cs
- ceSDKDef.cs

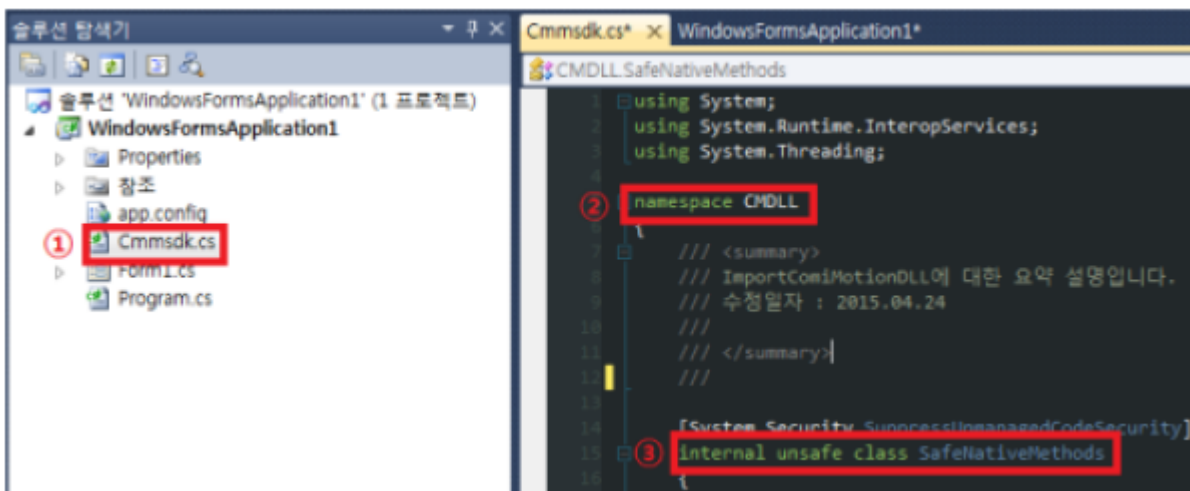
5 가

가

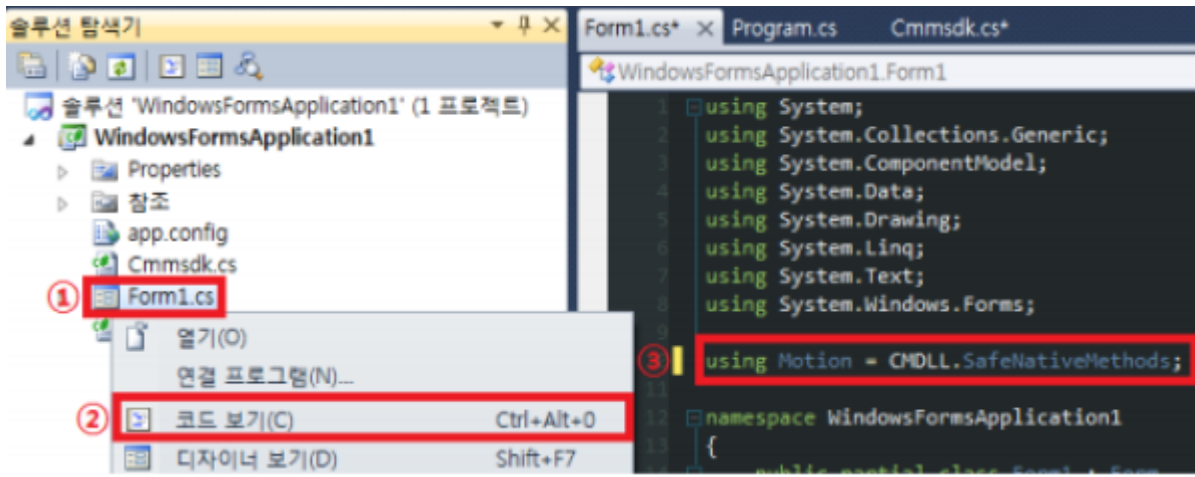


6 가 → Namespace Class

ex) SafeNativeMethods



7 Form.cs



*

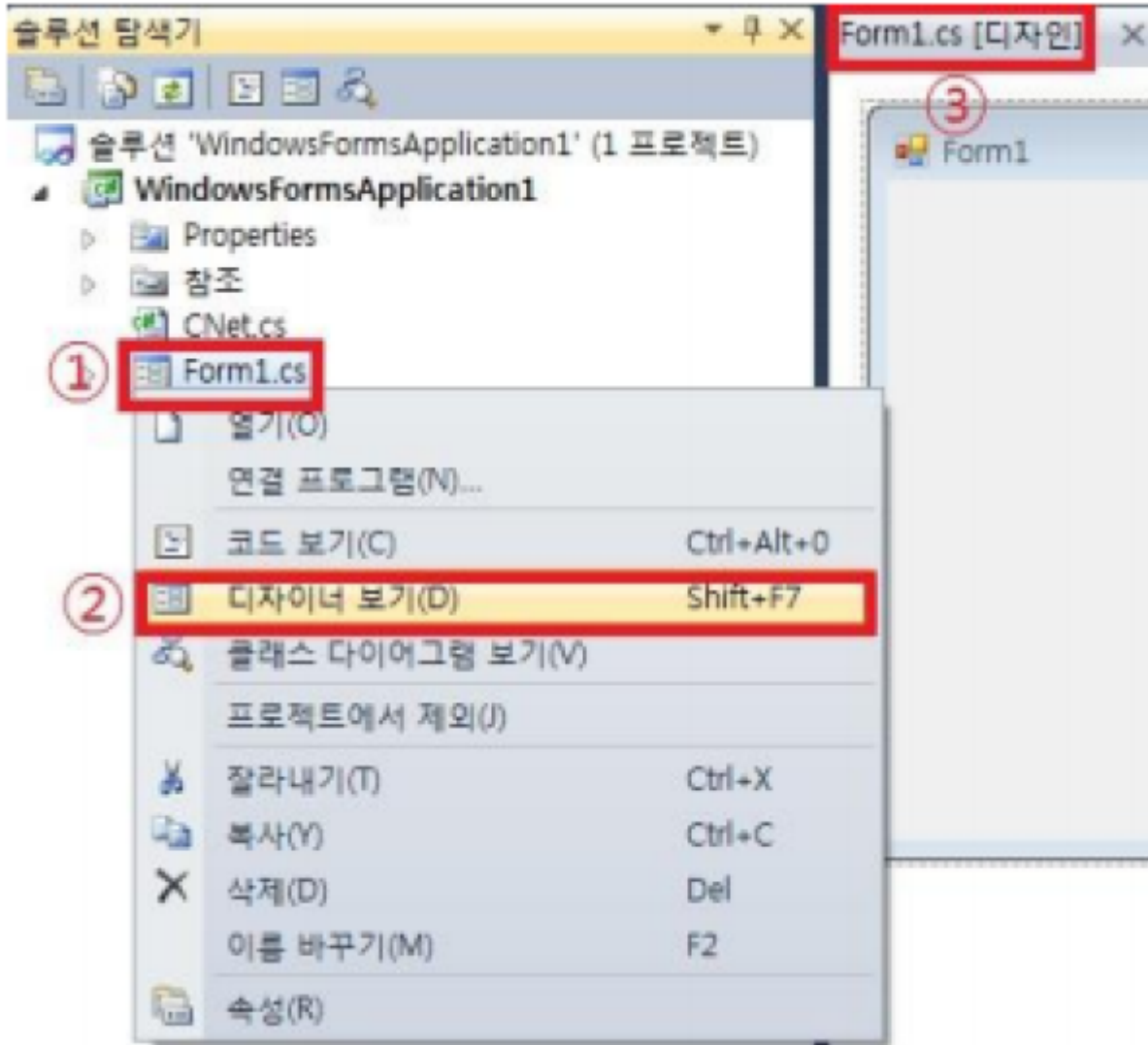
* namespace class using 가

- class Motion 가

Ex1) using CMDLL;

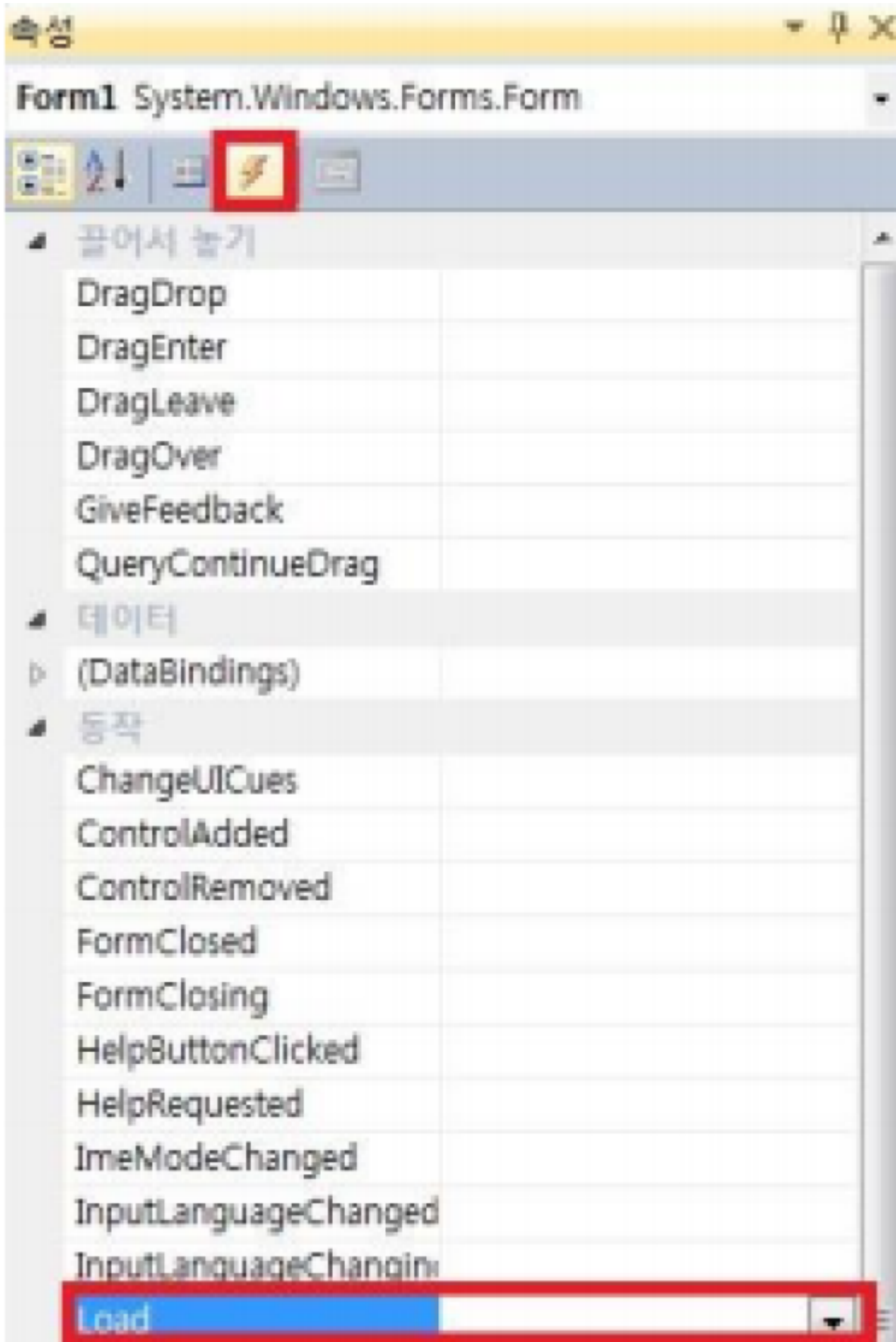
Ex2) using [] = CMDLL.SafeNativeMethods;

8 Form.cs



9 Form.cs[]

Load



10 Form.cs Form1_Load

Load Device

```
Form1.cs x Program.cs CmmSDK.cs
WindowsFormsApplication1.Form1
1 using System;
2 using System.Collections.Generic;
3 using System.ComponentModel;
4 using System.Data;
5 using System.Drawing;
6 using System.Linq;
7 using System.Text;
8 using System.Windows.Forms;
9
10 using Motion = CMDLL.SafeNativeMethods;
11
12 namespace WindowsFormsApplication1
13 {
14     public partial class Form1 : Form
15     {
16         public Form1()
17         {
18             InitializeComponent();
19         }
20
21         private void Form1_Load(object sender, EventArgs e)
22         {
23             int Device_reset = 1; //1 = reset, 0 = no reset
24             int NumAxes = 0;
25             int Err_chk = Motion.cmmGnDeviceLoad(Device_reset, ref NumAxes);
26             if (Err_chk != Motion.cmERR_NONE)
27             {
28                 System.Diagnostics.Trace.Write("장치로드에 실패 하였습니다.");
29             }
30         }
31     }
32 }
```

-CNET : cmmgnLoadDevice

-Motion : cmmGnDeviceLoad

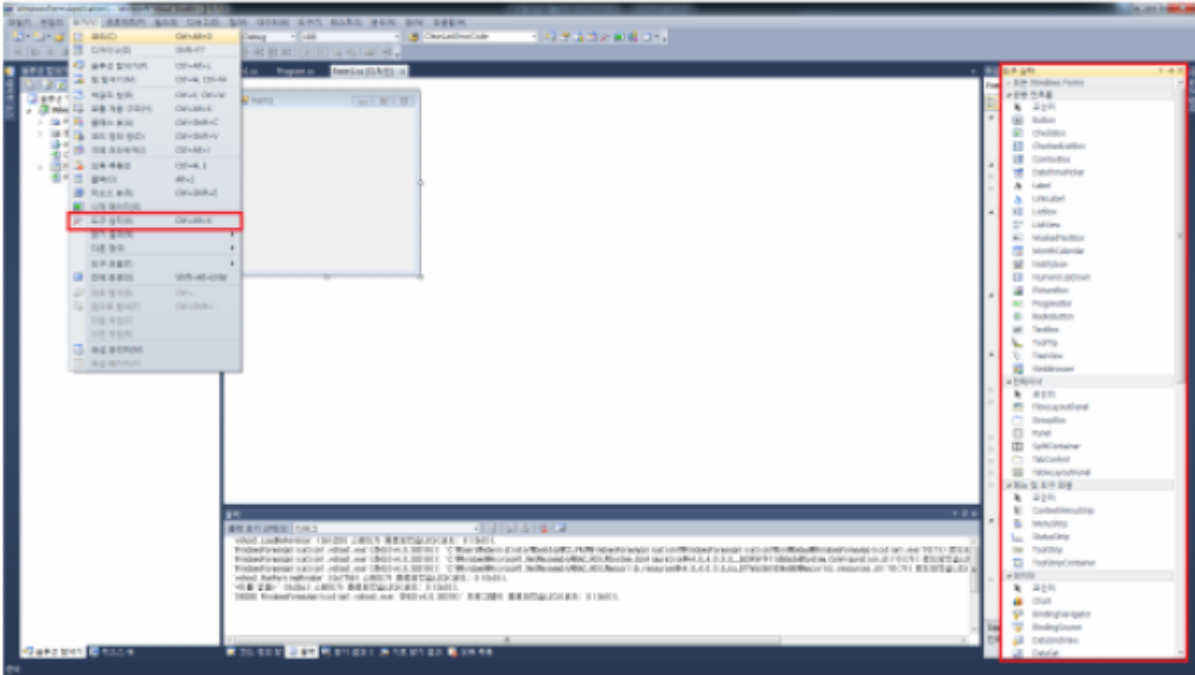
-DAQ : COMI_LoadDevice

-cEIP

1)ceGnLoad()

2)ceGnSearchDevice()

11



-CNET : cmmgnUnLoadDevice

-Motion : cmmGnDeviceUnLoad

-DAQ : COMI_UnLoadDevice

-cEIP : ceGnUnload

From:

<http://comizoa.co.kr/info/> - -

Permanent link:

http://comizoa.co.kr/info/doku.php?id=faq:downloadandsetup:common:07_csharp

Last update: **2024/07/08 18:23**