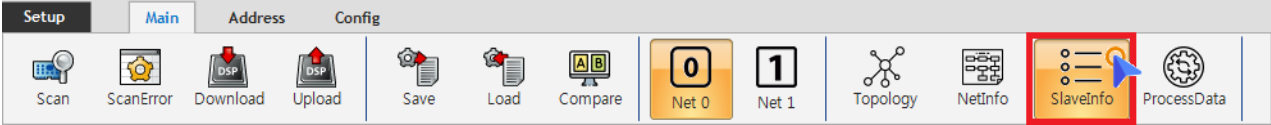


1. Configurator	Download	1
2. Slave EEPROM, Register	2

× EtherCAT Config

1. Configurator

Download



• Configurator Slave Info

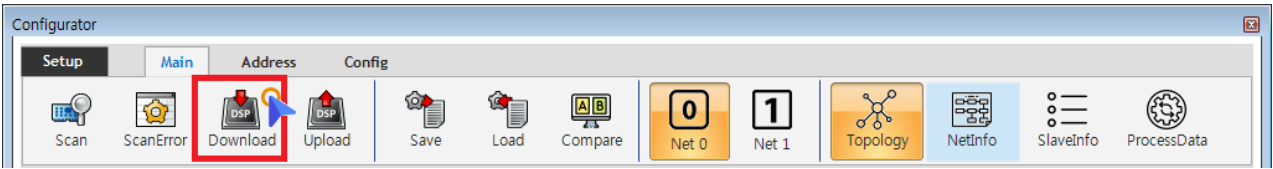
Property FMMU / SM

Product	ETS-A0402MV-E	ProductCode	0x5032D406
Vendor	COMIZOA	VendorID	0xAAAAAAAA
Group	ETS	RevisionNo	0x16102400

Address	
AddressMode A	ALIAS
Alias	580
AliasILMode B	IdentificationADO
AutoAddress	-6
PhysAddr_Hex C	0244
Info	
Physics Type	YY
SyncMode D	FreeRUN
Support	
IsAoE	False
IsCoE	True
IsFoE	True
IsMbx	True
Type	
DeviceType_401 E	AI, AO
ProfileNo	401
SubProfileNo	12

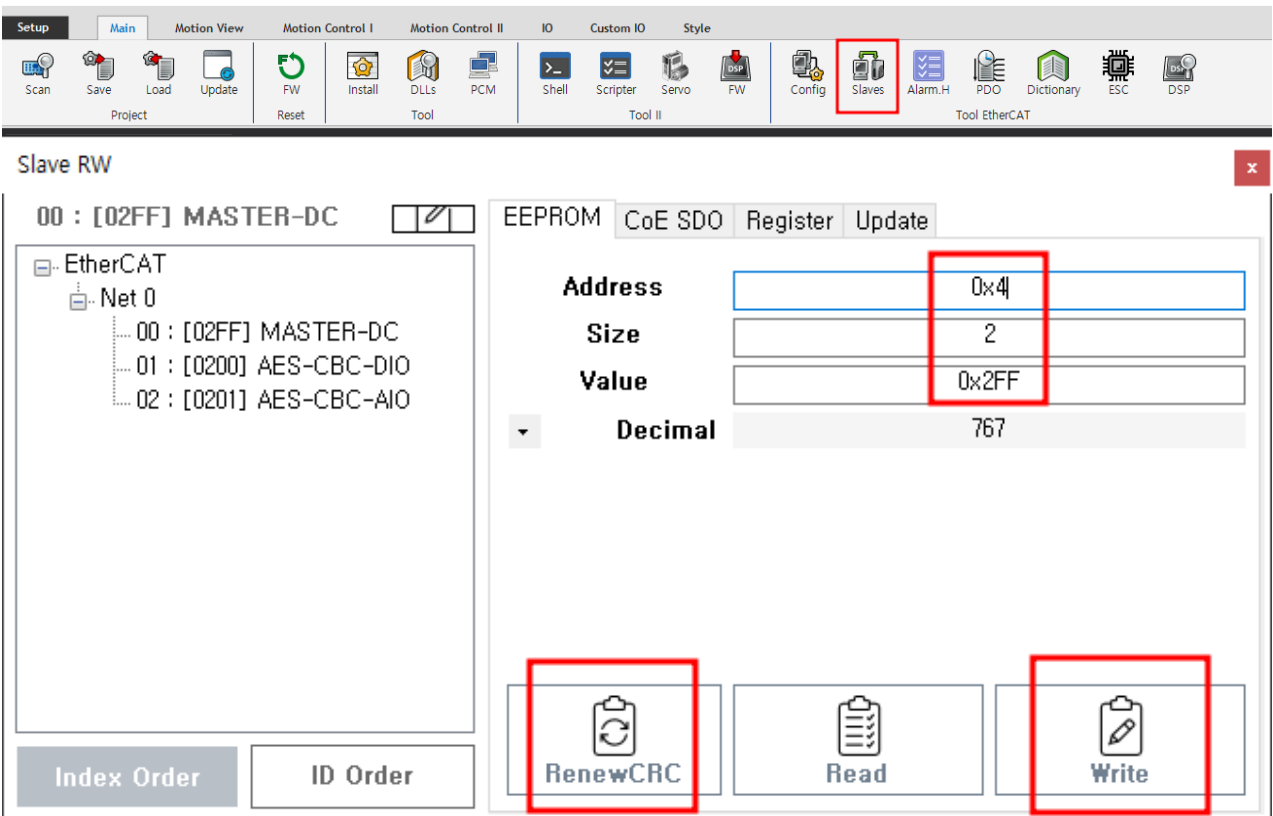
Apply All **3**

• PhysAddr_Hex Address



1. Download
- 2.

2. Slave EEPROM, Register



1. Slave
2. EEPROM 0x4 2 Slave Write
3. Renew CRC
- 4.

The screenshot shows the 'Slave RW' window with the following details:

- Device: 00 : [02FF] MASTER-DC
- Tree: EtherCAT > Net 0
 - 00 : [02FF] MASTER-DC
 - 01 : [0200] AES-CBC-DIO
 - 02 : [0201] AES-CBC-AIO
- Registers: EEPROM, CoE SDO, Register, Update
- Register: 0x12
- Size: 2
- Value: 0x2FF
- Decimal: 767
- Buttons: Index Order, ID Order, Read (highlighted), Write

1. Register 0x12 Read 가

From:

<http://comizoa.co.kr/info/> - -

Permanent link:

http://comizoa.co.kr/info/doku.php?id=faq:downloadandsetup:ethercat:05_slave_address_set

Last update: 2024/07/08 18:23