

- Case 1 1
 - Cause 1
 - Solution 1
- Case 2 1
 - Cause 1
 - Solution 2
- Case 3 2
 - Cause 2
 - Solution 3

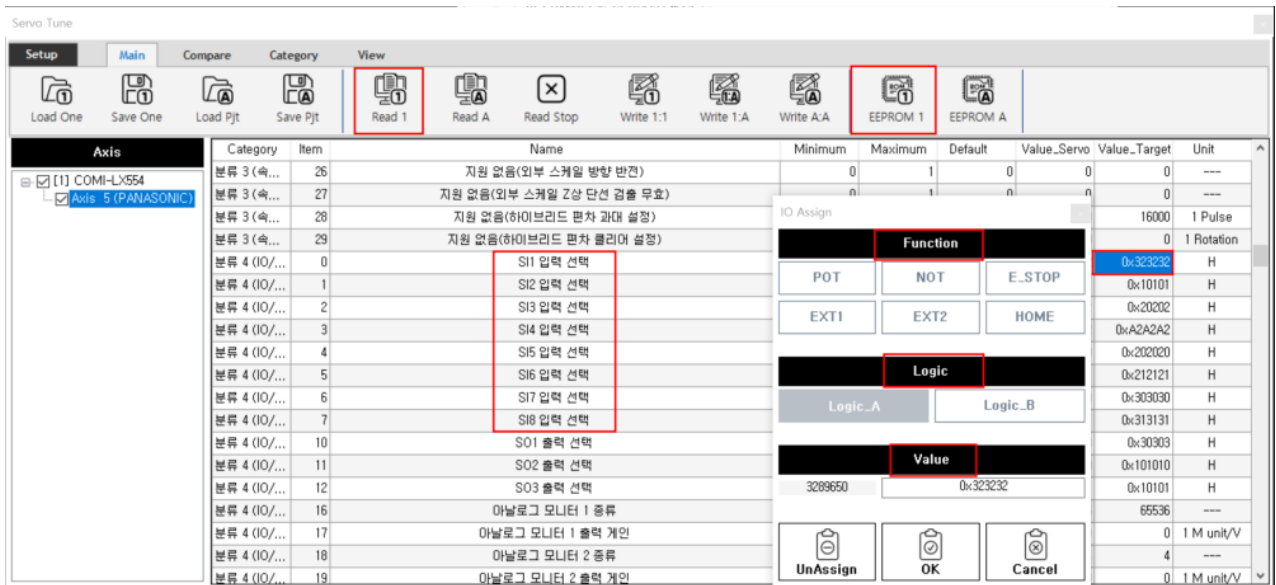
Driver IO가

x Home, EL +,- 가 IDE 가

Case 1

Cause

- IO Assign



- ServoTunes 가 SI Function, Logic, Value가

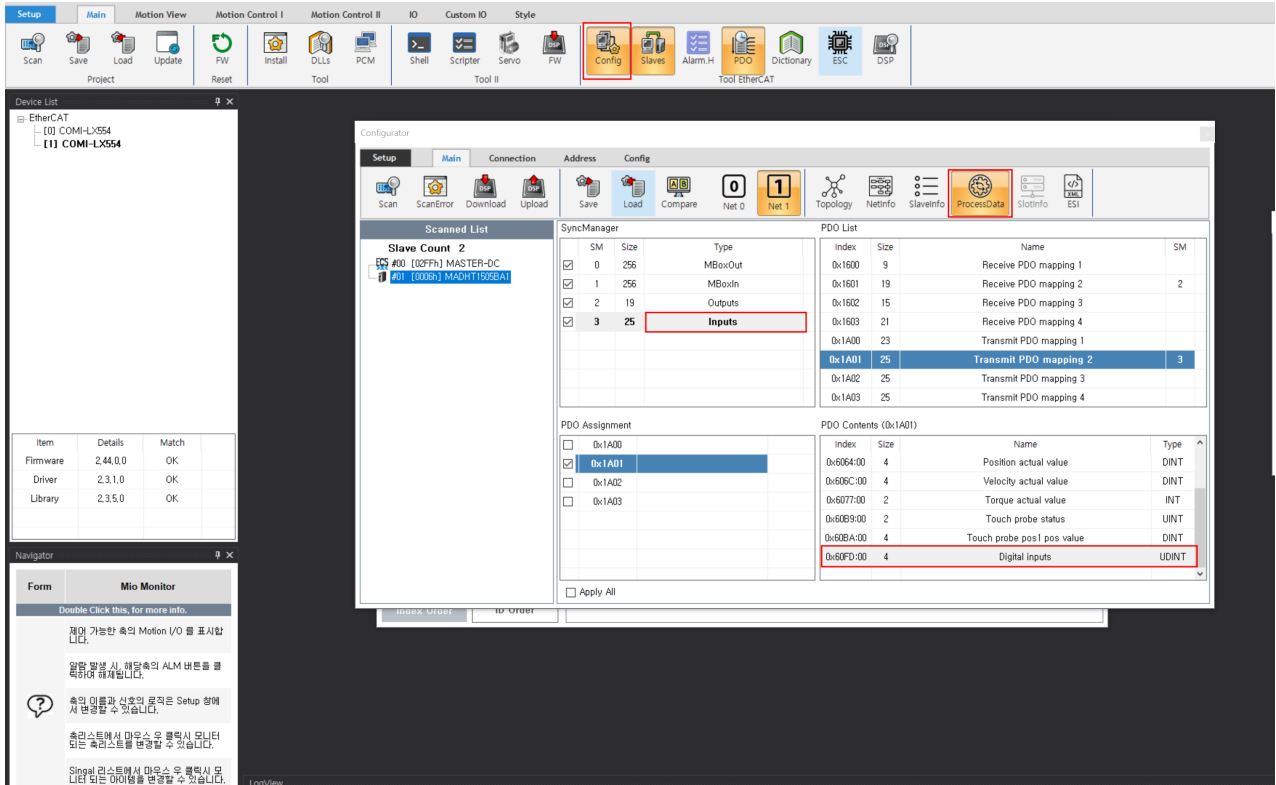
Solution

- Function, Logic, Value (ServoTunes , EEPROM Write)

Case 2

Cause

- PDO DI



- [Config]→ Scan ProcessData Inputs 'PDO Contents' "0x60FD Digital Input"

Solution

- , ESI / PDO Map

Case 3

Cause

* IO assign PDO Digital Input , DI

The screenshot shows the 'Tool EtherCAT' interface. At the top, there are icons for Config, Slaves, Alarm.H, PDO, Dictionary, ESC, and DSP. The 'Slaves' icon is highlighted with a red box. Below the icons, the 'Slave RW' window is open. On the left, a tree view shows the EtherCAT network structure: EtherCAT -> Net 0 -> 00 : [FFFF] MASTER-DC, 01 : [0002] Ezi-SERVO2 EtherC; and Net 1 -> 00 : [02FF] MASTER-DC, 01 : [0006] MADHT1505BA1. The '01 : [0006] MADHT1505BA1' node is selected. On the right, the 'CoE SDO' tab is active, displaying a table of SDO parameters:

Index	0x60FD
Sub Index	0
Size	4
Value	0x0
signed(Signed)	0

At the bottom of the window, there are 'Index Order' and 'ID Order' buttons, and 'Read' and 'Write' buttons. The 'Read' button is highlighted with a red box.

- [Slaves] 'CoE SDO' 가 'Digital Input' (Index : 0x60FD , SubIndex : 0, Size : 4) 'Read'
- Home, EL+, - ,

Solution

- . ()

From:

<http://comizoa.co.kr/info/> - -

Permanent link:

http://comizoa.co.kr/info/doku.php?id=faq:io:ethercat:02_driver_io_fail

Last update: **2024/07/08 18:23**