

..... 1

ESI Import ..... 2

Network ..... 2

Scan ..... 2

Master-DC ..... 3

Scan ..... 3

Download ..... 5

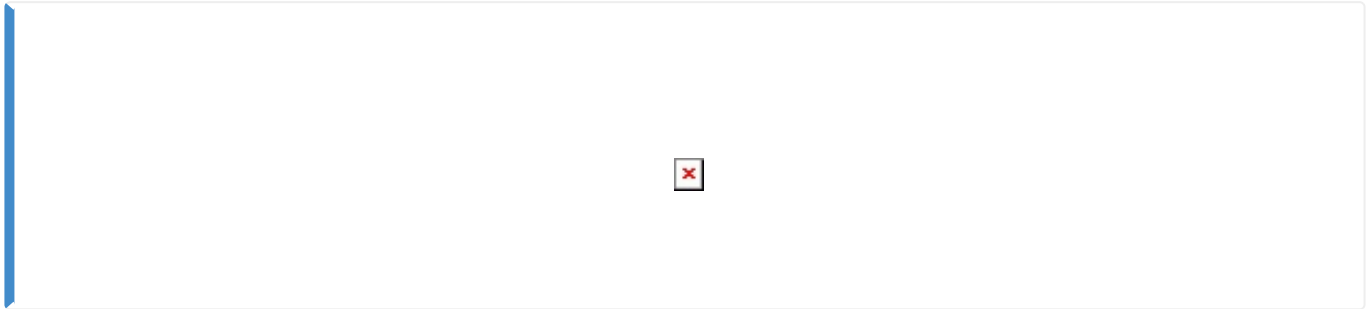
Configuration Check ..... 6

, Config, , ComiIDE, ComiEcatConfig

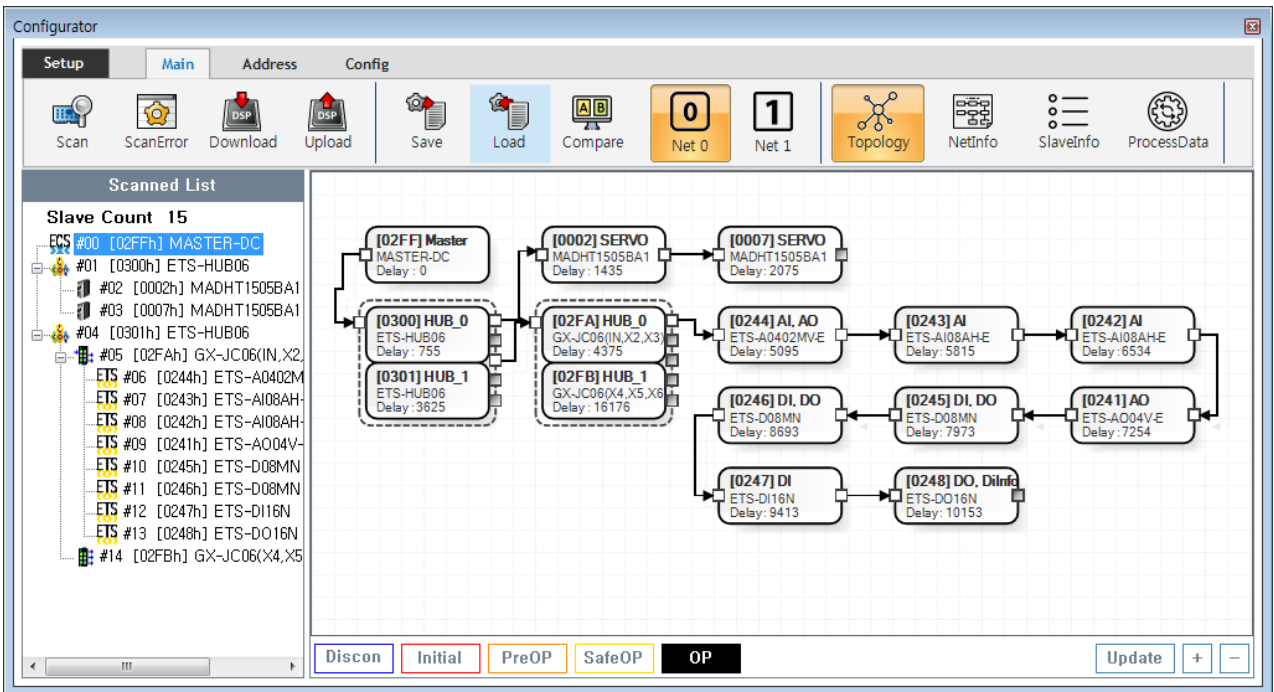
# Configuration :

× Configuration , Slave Configuration

× ComiIDE v1.3.11.0



- ComiIDE Main **Config**



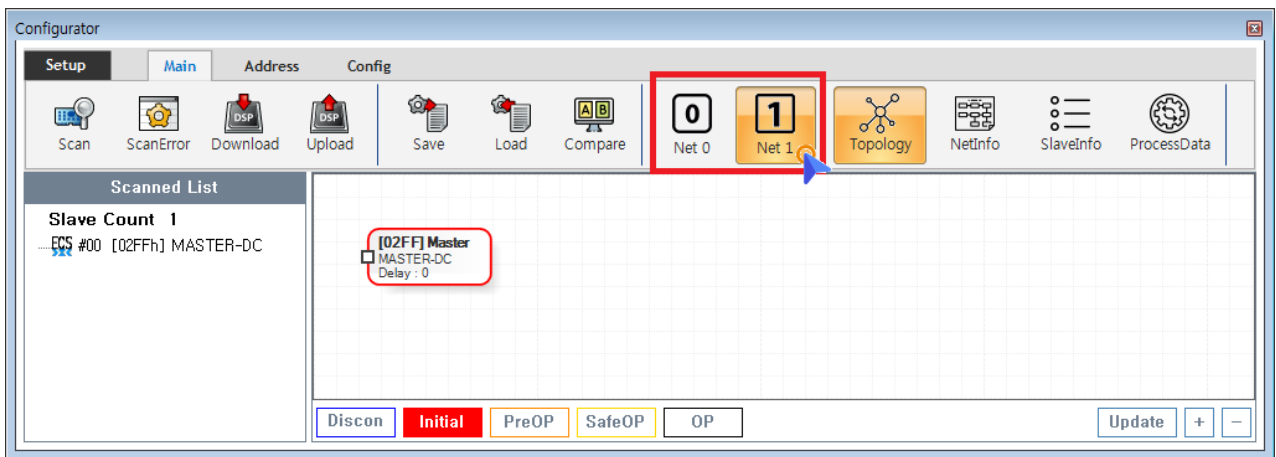
- Config , EtherCAT Master가 Load
  - **Device Load**
  - **SW Version**
- Config 가 Update

- Config      Scan - Edit - Download      Configuration

### ESI      Import

- Scan      **Slave Module      ESI file**
- ESI      **./ComilDE/Data/Xml**
- 가 /      ESI      Configurator

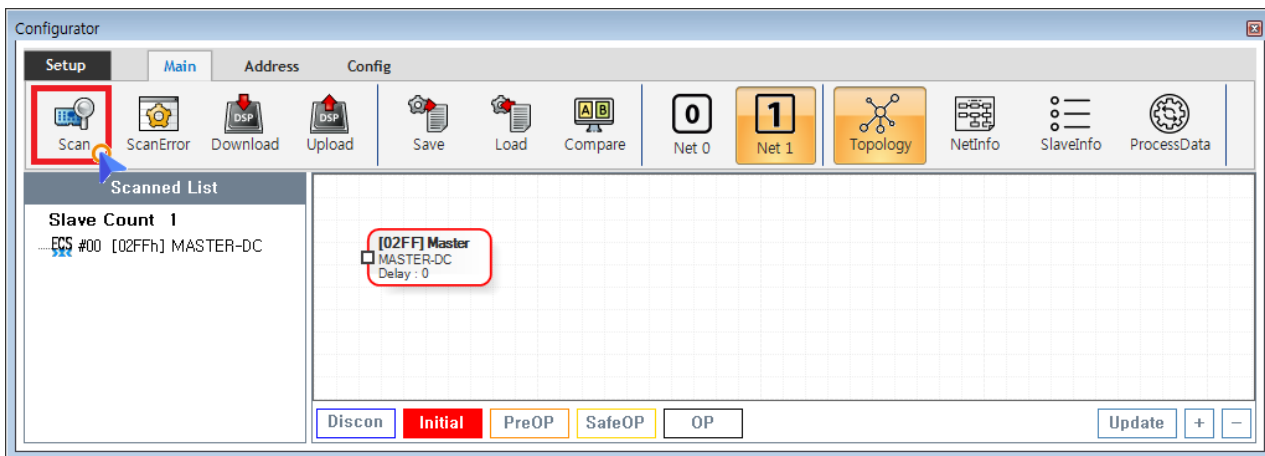
### Network



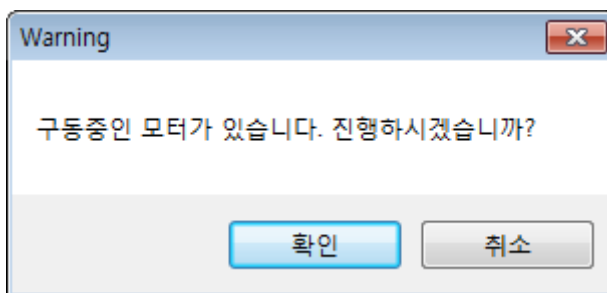
- COMI-LX550 ~ COMI-LX554      1      Network 가 , COMI-LX554  
Network 가
- Network 가
  - **Net #** , Network
  - Configuration Network , Network Configuration

### Scan

- Scan      EtherCAT Master      Slave Module



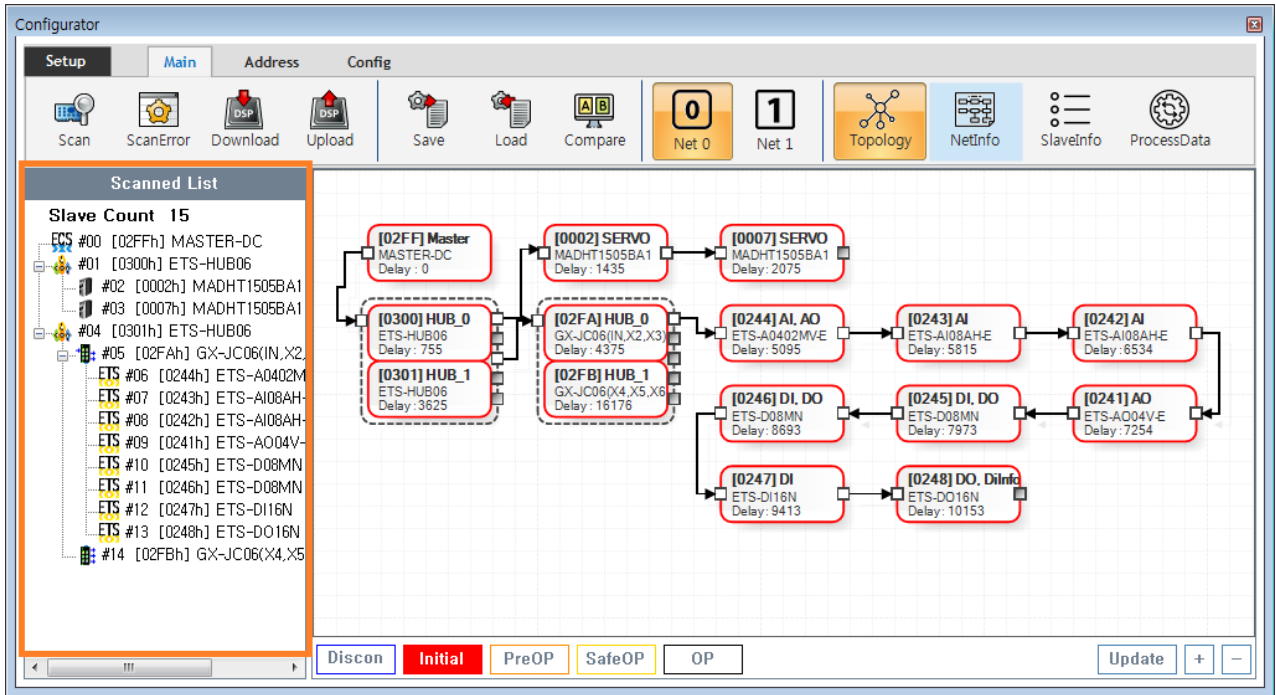
- Main Tab          **Scan**                          SCAN                          .
- Scan                          ,          Slave Module      AIStatus      Initial                          .
- 가                          ,                          .



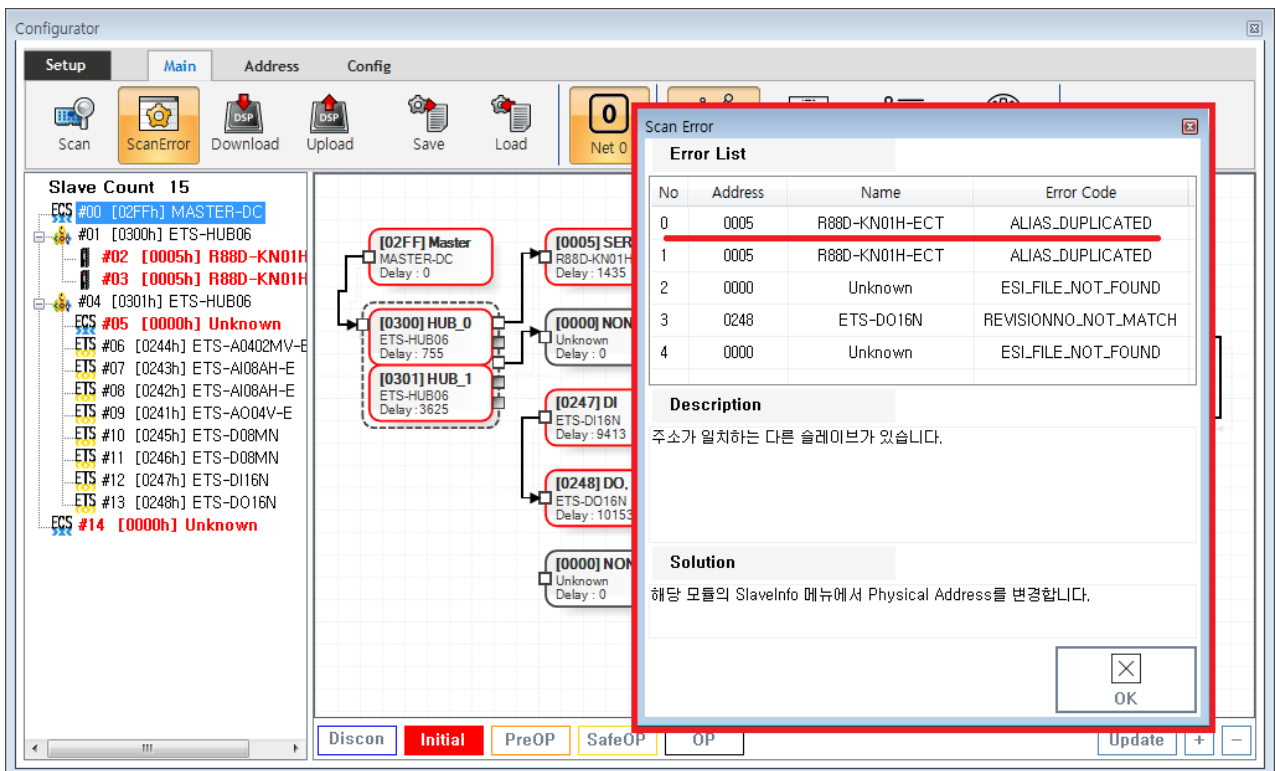
**Master-DC**

- Master-DC                          .
- Slave Module                          , Master-DC                          .
- Master DC가                          , **Scan**      **Master-DC**                          가                          .

**Scan**

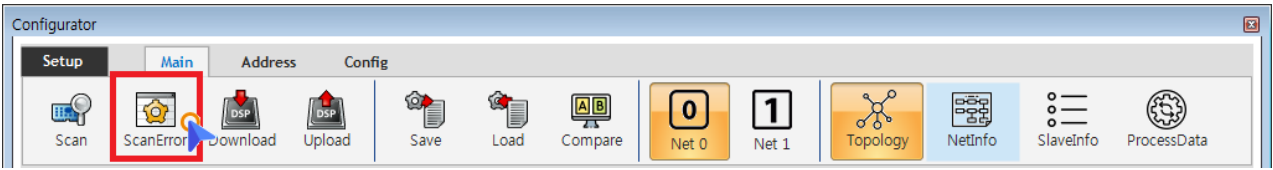


• Tree Slave가 , Slave



• 가 ScanError List

ErrorCode Scan Error 가



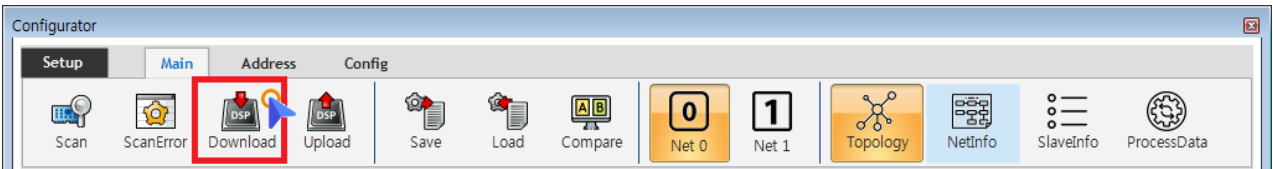
- Scan Error Main - **ScanError**  
ScanError List

× **Warning!**

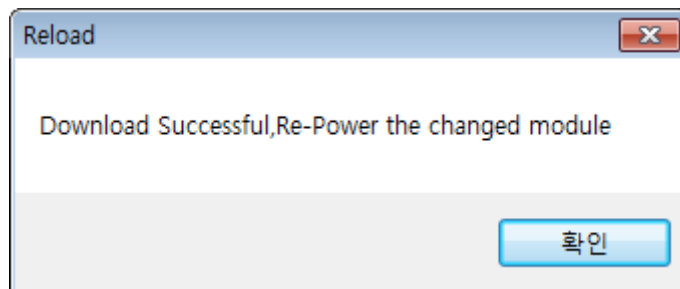
Scan Download

**Download**

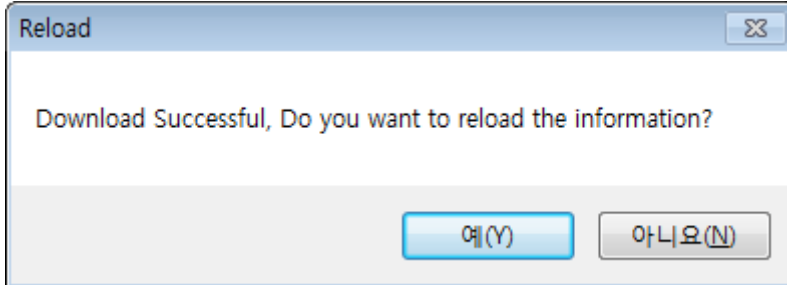
- DownLoad / Slave Master



- Main - **Download**
- Scan Error가 , Download ScanError
- ScanError가 Download 가 , AIStatus가



- EEPROM Data가 , Slave Module Configuration Address
  - Slave Address가 ,



- ComilDE
  - “ ”

### Configuration Check

- Configuration , Slave AI Status 가 OP
  - , AI Status
- Slave가 OP가 , OP

From:  
<http://comizoa.co.kr/info/> - -

Permanent link:  
[http://comizoa.co.kr/info/doku.php?id=platform:ethercat:1\\_setup:10\\_config:20\\_configuration&rev=1586441964](http://comizoa.co.kr/info/doku.php?id=platform:ethercat:1_setup:10_config:20_configuration&rev=1586441964)

Last update: **2024/07/08 18:22**