

..... 1

ESI Import 2

Network 2

Scan 2

Master-DC 3

Scan 3

Download 5

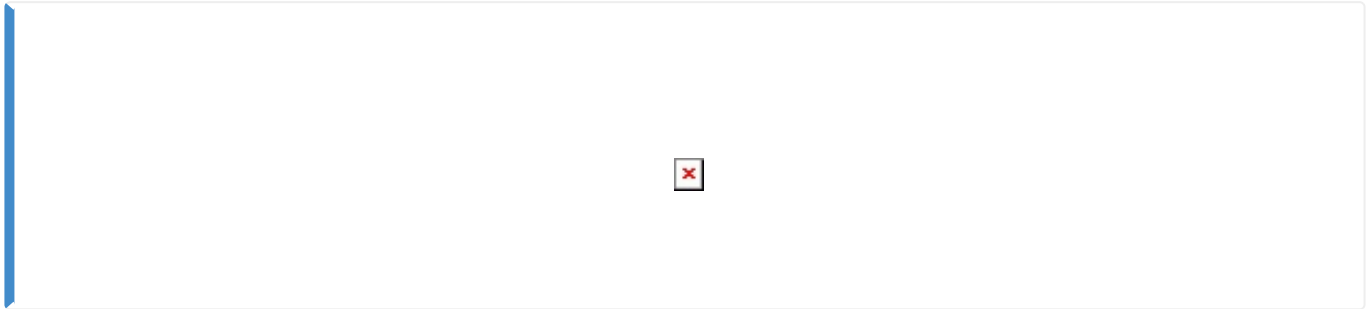
Configuration Check 6

, Config, , ComiIDE, ComiEcatConfig

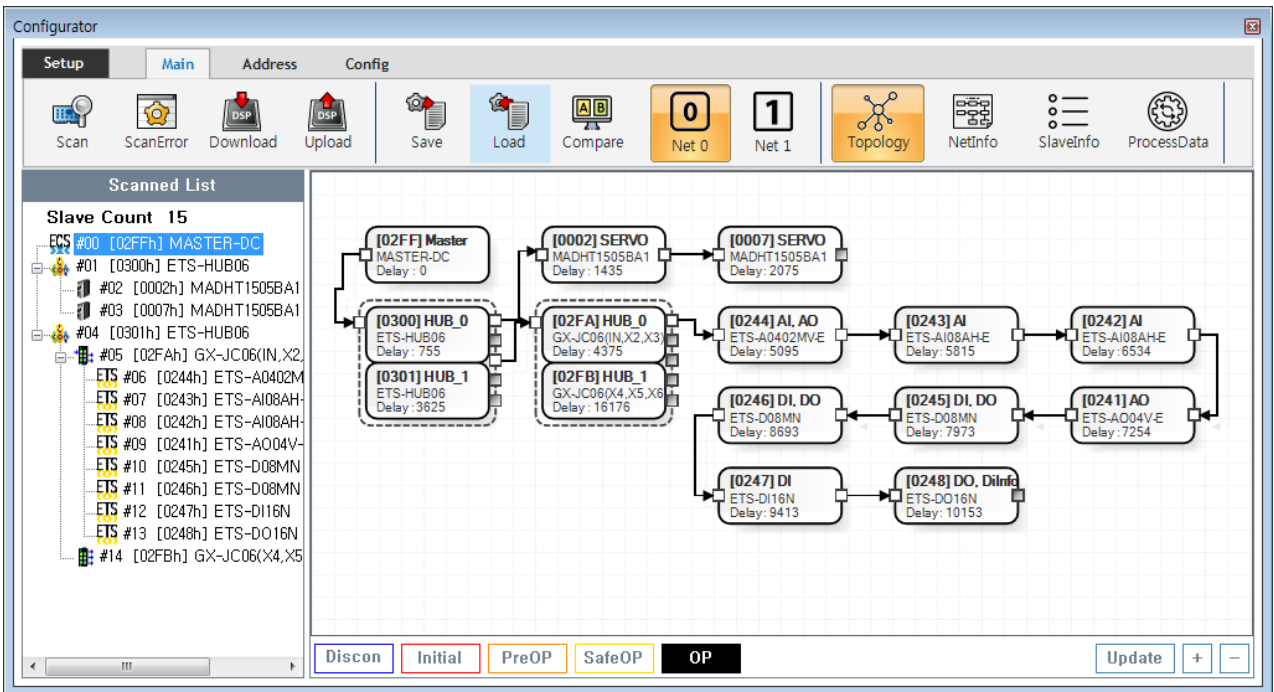
Configuration :

× Configuration , Slave Configuration

× ComiIDE v1.4.0.0



- ComiIDE Main **Config**



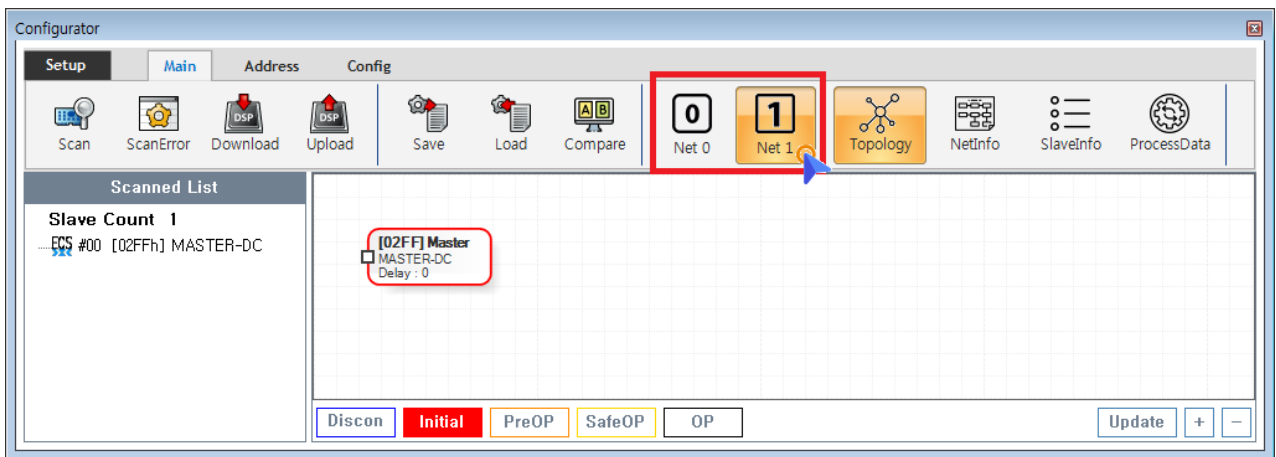
- Config , EtherCAT Master가 Load
 - **Device Load**
 - **SW Version**
- Config 가 Update

- Config Scan - Edit - Download Configuration

ESI Import

- Scan **Slave Module ESI file**
- ESI **./ComilDE/Data/Xml**
- 가 / ESI Configurator

Network

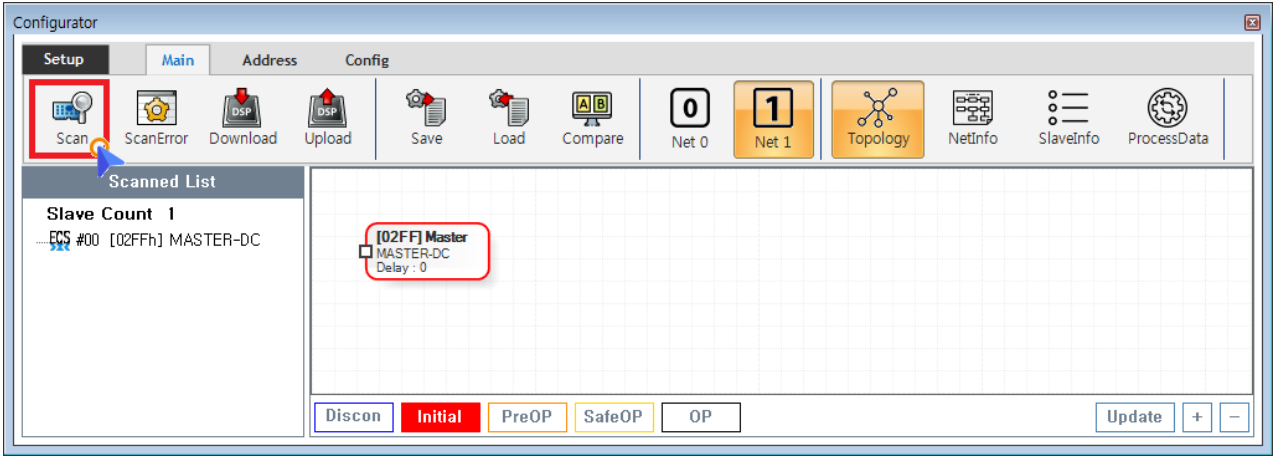


- COMI-LX550 ~ COMI-LX554 1 Network 가 , COMI-LX554
Network 가

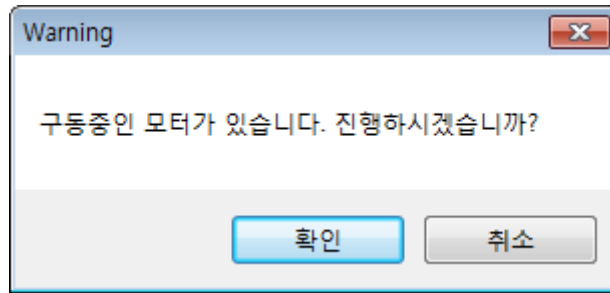
- Network 가
 - **Net #** , Network
 - Configuration Network , Network Configuration

Scan

- Scan EtherCAT Master Slave Module



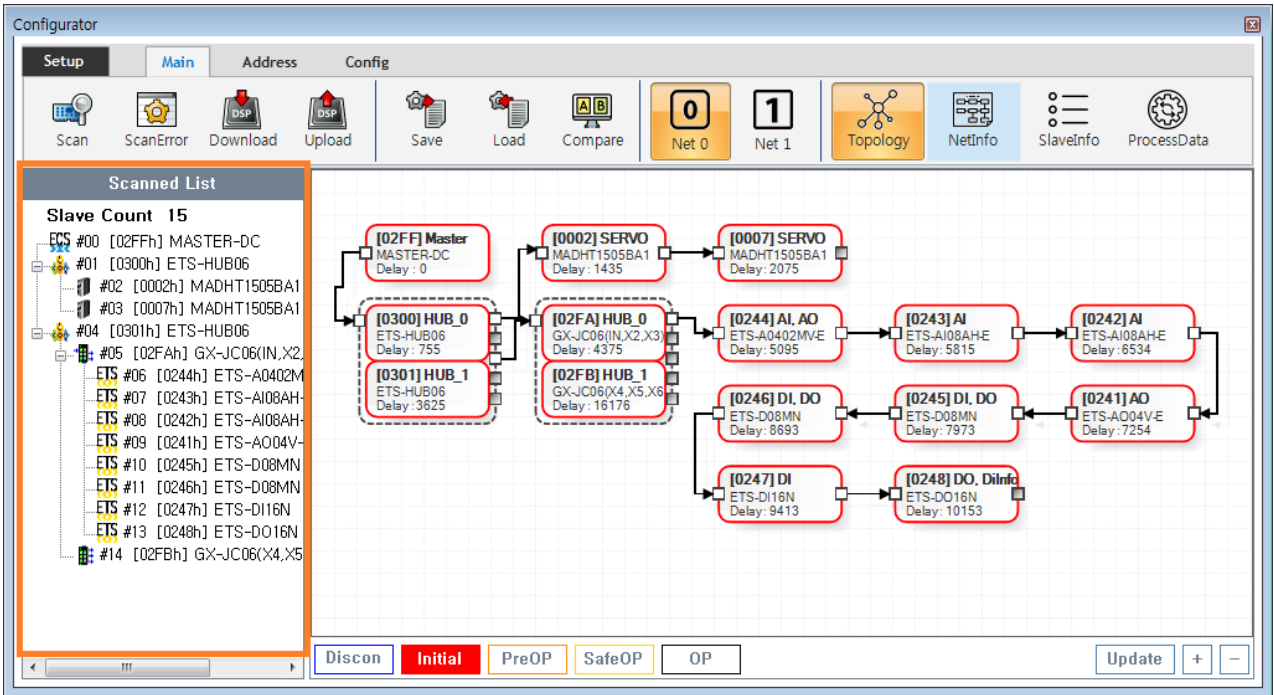
- Main Tab **Scan** SCAN
- Scan , Slave Module AIStatus Initial
o 가 ,



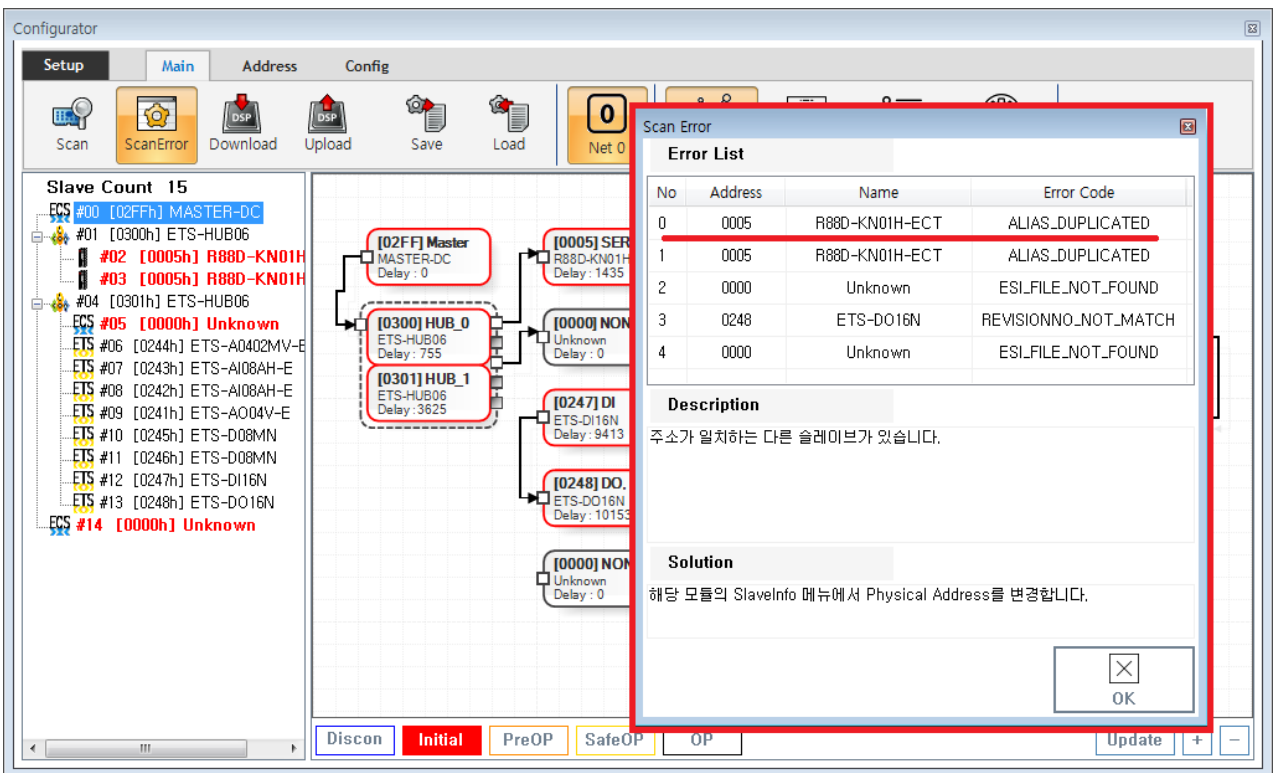
Master-DC

- Master-DC
- Slave Module , Master-DC
- Master DC가 , **Scan Master-DC** 가

Scan

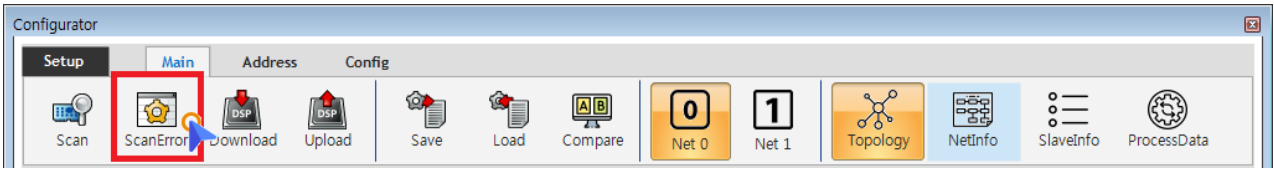


- Tree Slave가 , Slave



- 가 ScanError List

ErrorCode Scan Error 가



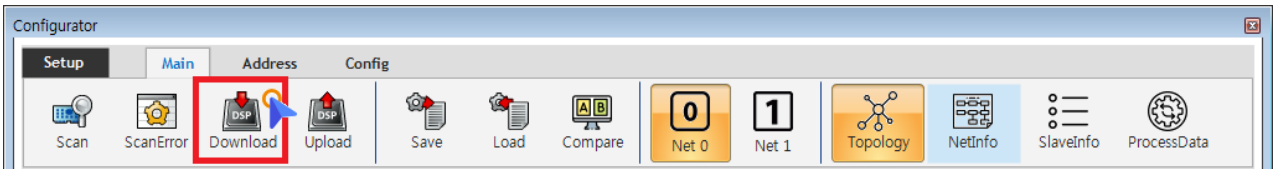
- Scan Error Main - **ScanError**
- ScanError List

× **Warning!**

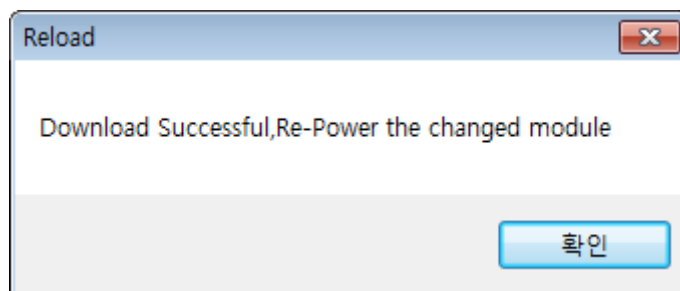
Scan Download

Download

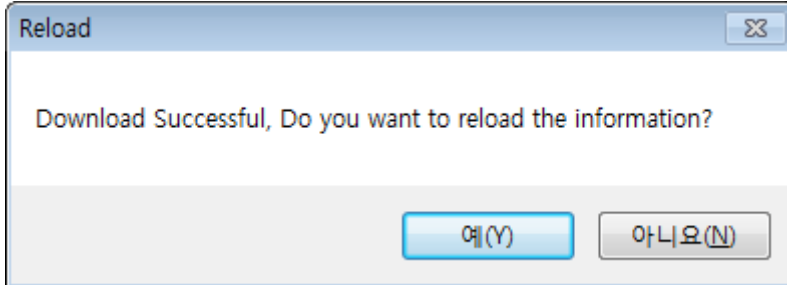
- DownLoad / Slave Master



- Main - **Download**
- Scan Error가 , Download ScanError
- ScanError가 Download 가 , AIStatus가



- EEPROM Data가 , Slave Module Configuration Address
- Slave Address가 ,



- ComilDE “ ”

Configuration Check

- Configuration , Slave AI Status 가 OP , AI Status
- Slave가 OP가 , OP

From: <http://comizoa.co.kr/info/> - -

Permanent link: http://comizoa.co.kr/info/doku.php?id=platform:ethercat:1_setup:10_config:20_configuration&rev=1586755960

Last update: 2024/07/08 18:22