

..... 1

ESI Import ..... 2

Network ..... 2

Scan ..... 2

Master-DC ..... 3

Scan ..... 3

Download ..... 5

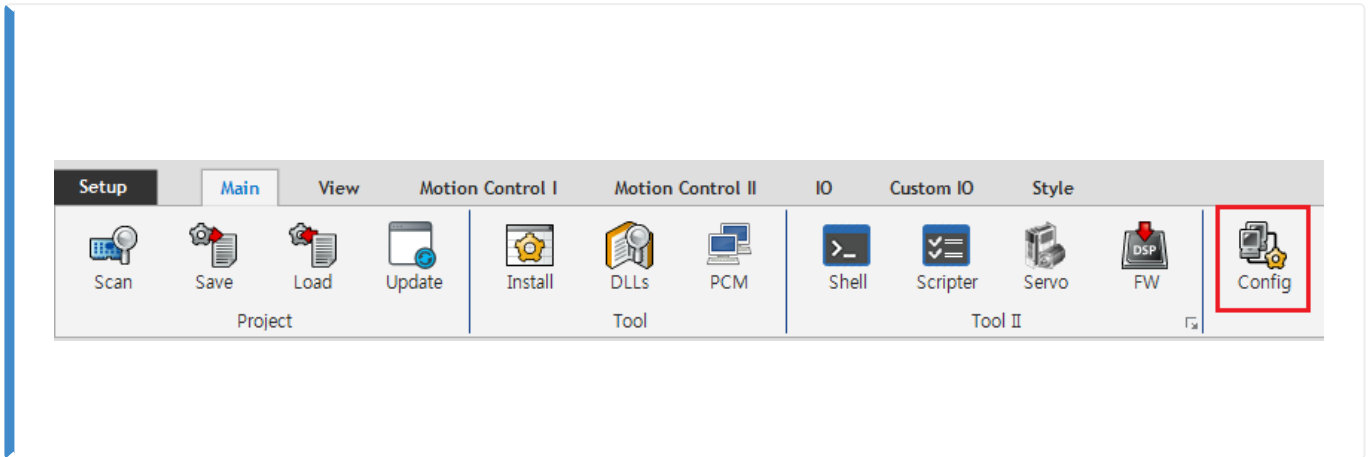
Configuration Check ..... 6

, Config, , ComiIDE, ComiEcatConfig

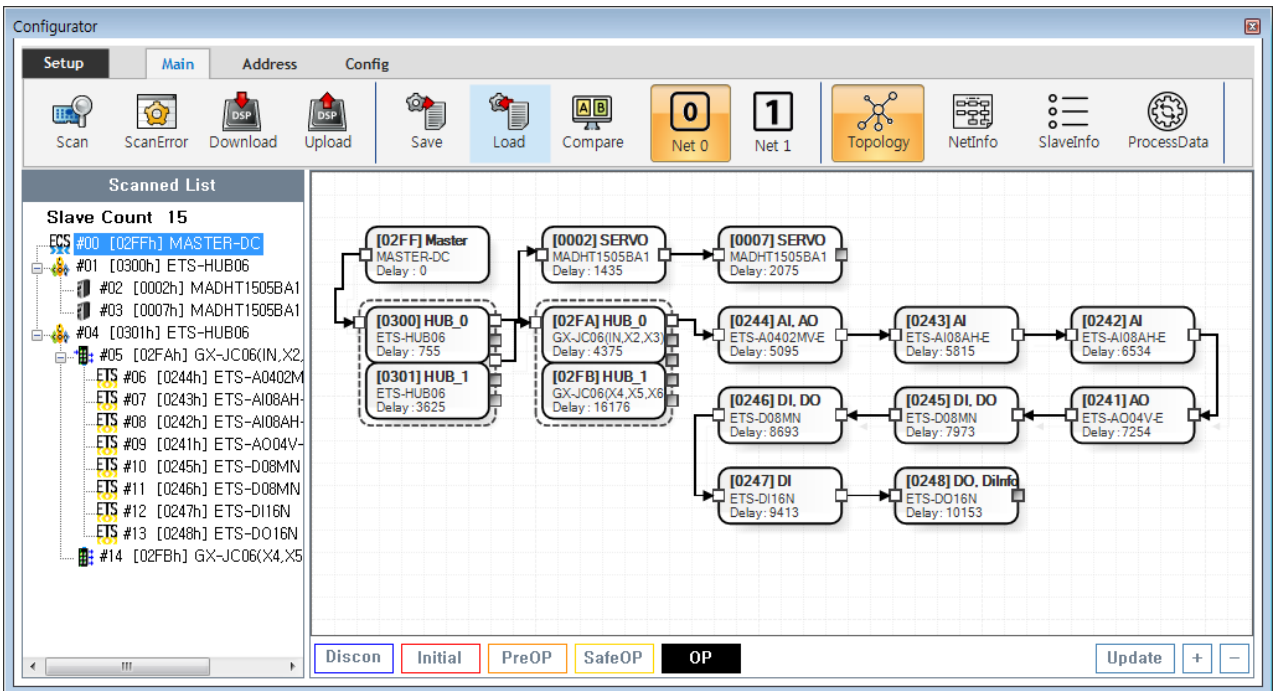
# Configuration :

× Configuration , Slave Configuration

× ComiIDE v1.4.0.0



• ComiIDE Main **Config**



• Config , EtherCAT Master가 Load

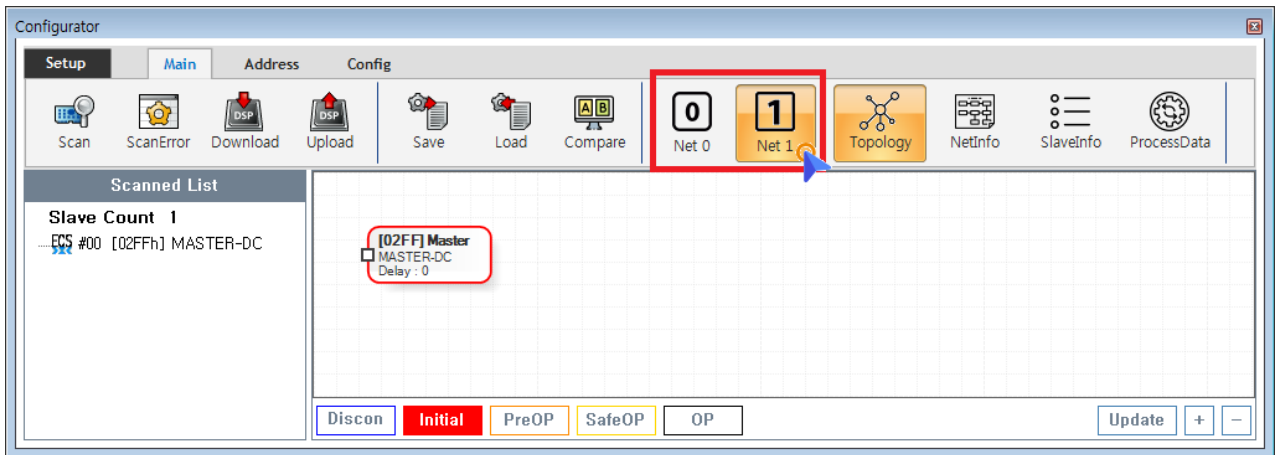
- **Device Load**
- **SW Version**

- Config 가 Update
- Config Scan - Edit - Download Configuration

### ESI Import

- Scan Slave Module ESI file
- ESI ./ComilDE/Data/Xml
- 가 / ESI Configurator

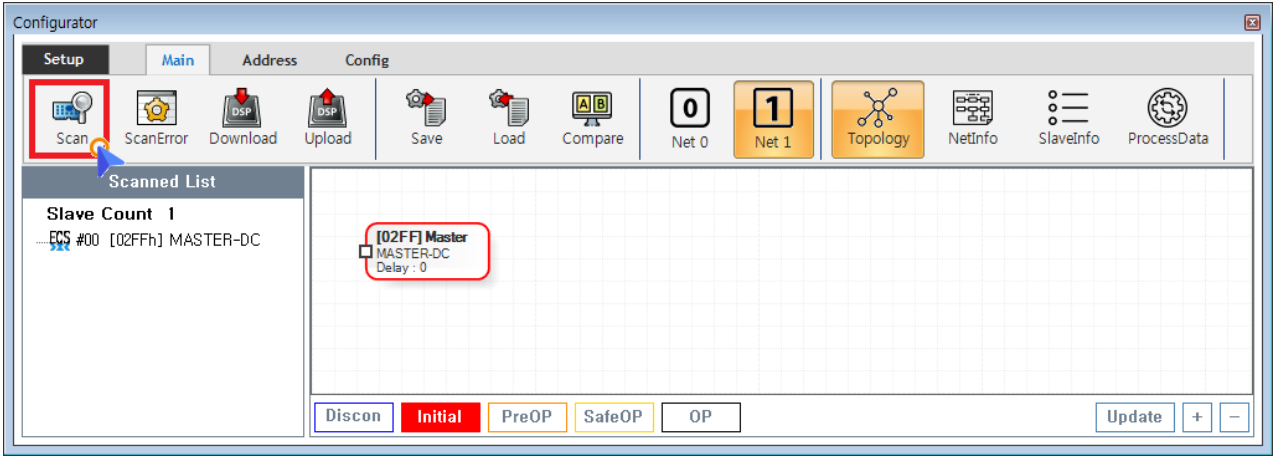
### Network



- COMI-LX550 ~ COMI-LX554 1 Network 가 , COMI-LX554 Network 가
- Network 가
  - **Net #** , Network
  - Configuration Network , Network Configuration

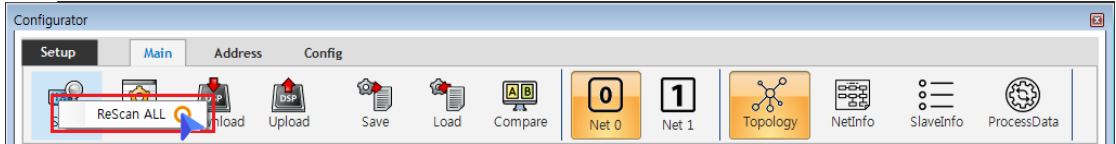
### Scan

- Scan EtherCAT Master Slave Module

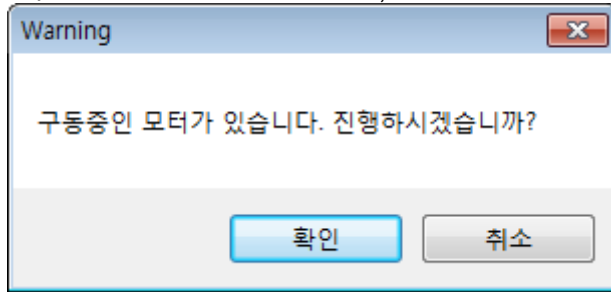


- Main Tab **Scan**
  - SCAN , SCAN Scan\_failed SCAN
  - SCAN , **Scan** **ReScan**

ALL/btn>



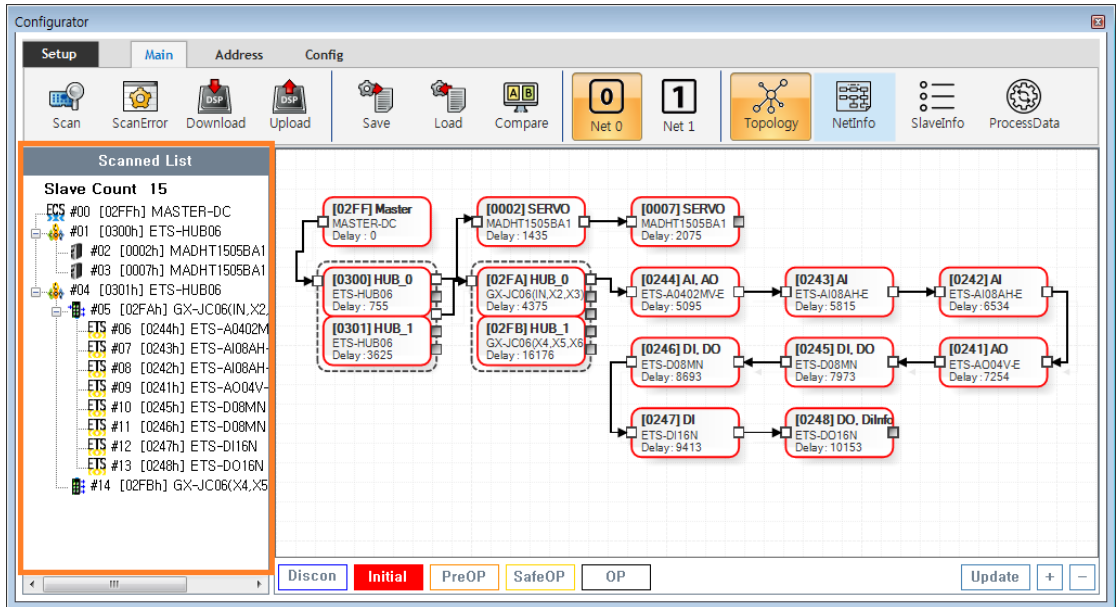
- \* Scan , Slave Module AIStatus Initial
- \* 가 ,



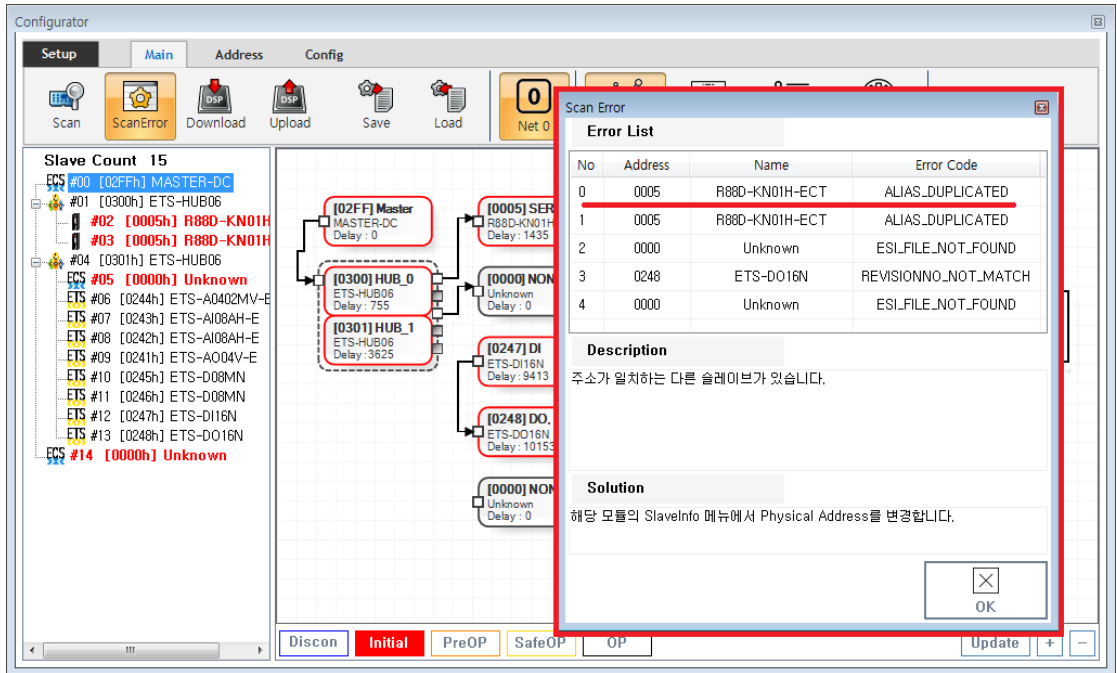
### Master-DC

- \* Master-DC , Slave Module ,
- Master-DC , \* Master DC가 , Scan Master-
- DC 가

### Scan

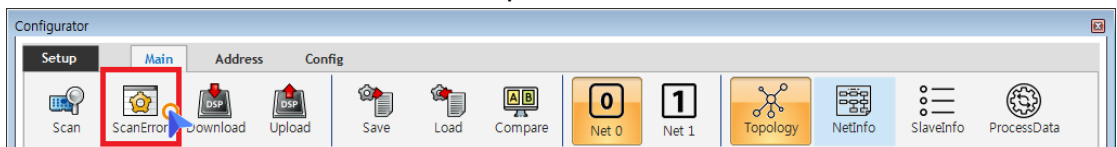


\* Tree Slave가  
Slave



\* 가 ScanError List  
\* ErrorCode

Scan Error 가



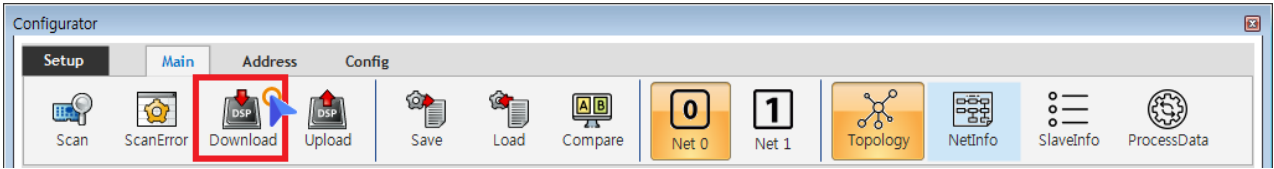
\* Scan Error Main - <btn size="xs"> ScanError  
ScanError List

× Warning!  
Scan

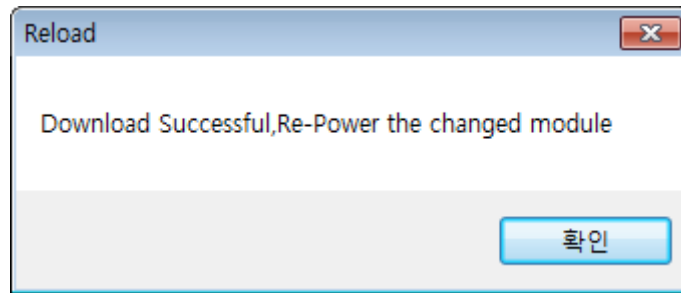
Download

### Download

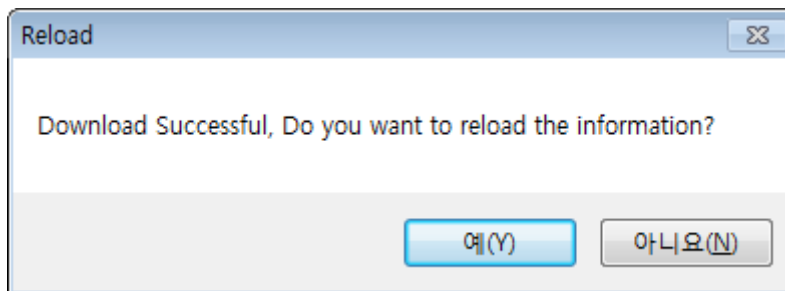
- DownLoad / Slave Master



- Main - **Download**
- Scan Error가 , Download ScanError
- ScanError가 Download 가 , AIStatus가



- EEPROM Data가 , Slave Module
  - Configuration Address
  - Slave Address가 ,



- ComiIDE
  - “ ”

### Configuration Check

- Configuration
  - , Slave AI Status 가 OP , **AI Status** .
- Slave가 OP가 , **OP** .

From:

<http://comizoa.co.kr/info/> - -

Permanent link:

[http://comizoa.co.kr/info/doku.php?id=platform:ethercat:1\\_setup:10\\_config:20\\_configuration&rev=1586850372](http://comizoa.co.kr/info/doku.php?id=platform:ethercat:1_setup:10_config:20_configuration&rev=1586850372)

Last update: **2024/07/08 18:22**