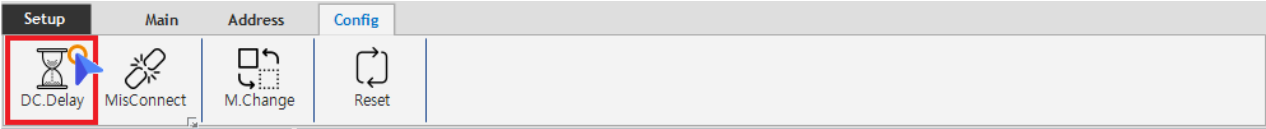


Distributed Clock Delay 1
DC Delay 1

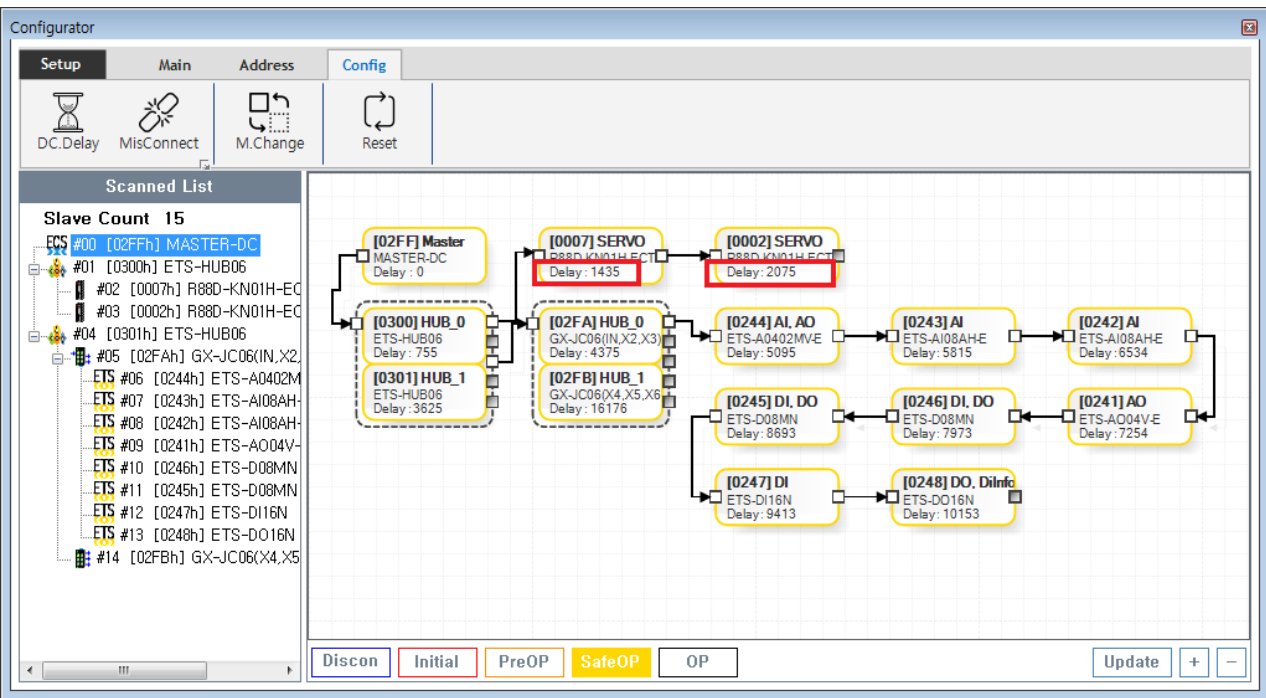
Distributed Clock Delay

× DC¹⁾-Sync Mode Delay Time

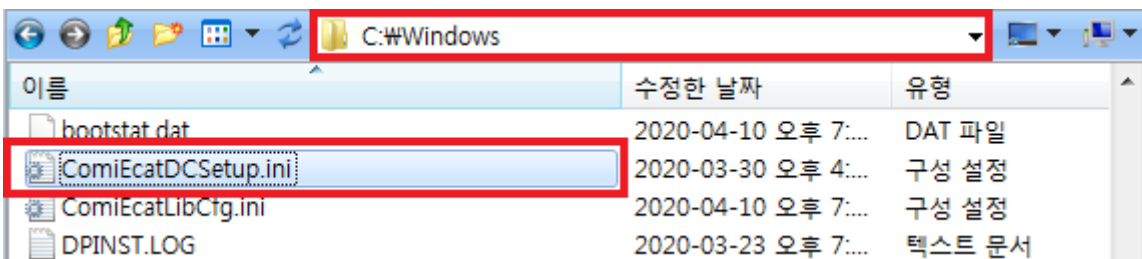


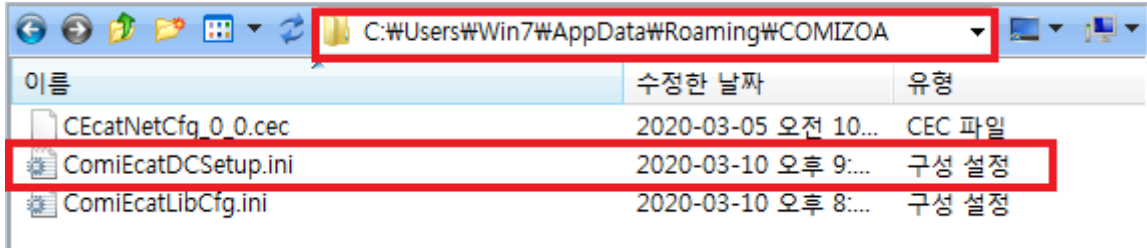
- **Config Tab** DC.Delay
- **DC Sync** Slave

DC Delay



- TopologyView Table Delay가 ns

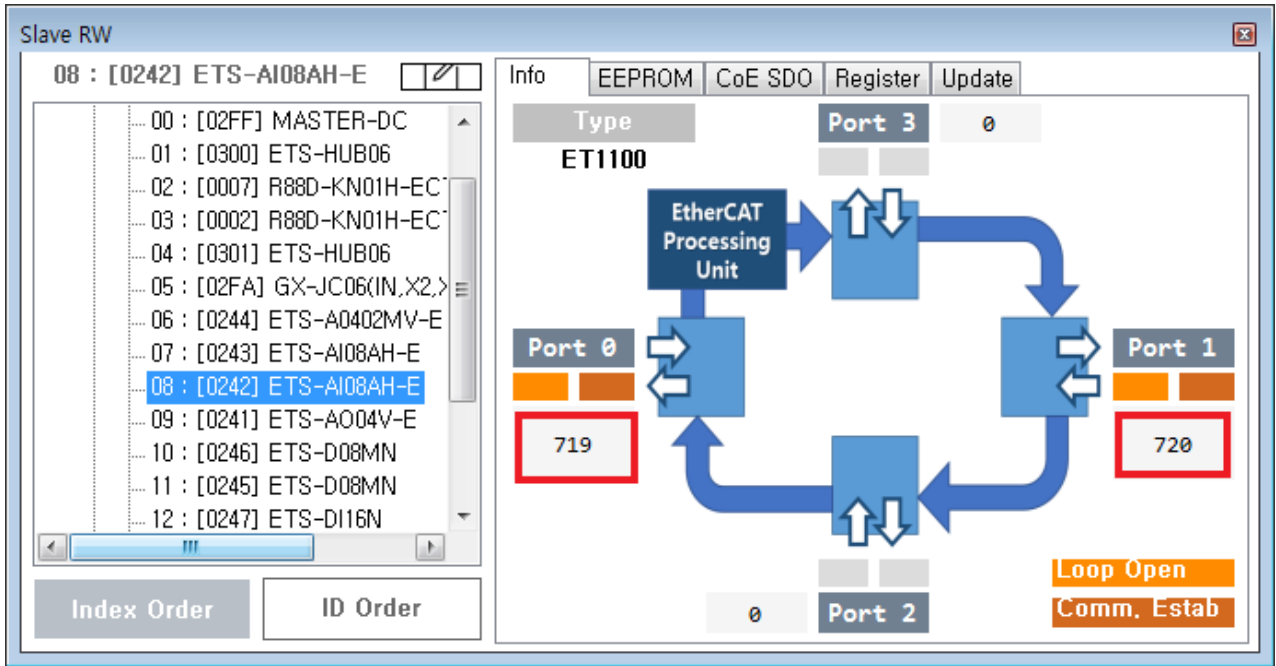




- 'c:\windows' 'C:\Users\Win7\AppData\Roaming\COMIZOA'
- 'ComiEcatDCSetup.ini' .

```
[NET1_DC_DELAY]
NumSlaves=20
slave000=767, 0, 735, 0, 0, 0
slave001=768, 735, 720, 135, 0, 735
slave002=580, 720, 699, 0, 0, 1455
slave003=579, 699, 740, 0, 0, 2154
slave004=578, 740, 719, 0, 0, 2894
slave005=577, 719, 740, 0, 0, 3613
slave006=581, 740, 720, 0, 0, 4353
slave007=582, 720, 719, 0, 0, 5073
slave008=583, 719, 720, 0, 0, 5792
slave009=584, 720, 720, 0, 0, 6512
slave010=586, 720, 720, 0, 0, 7232
slave011=585, 720, 720, 0, 0, 7952
slave012=588, 720, 740, 0, 0, 8672
slave013=587, 740, 0, 0, 0, 9412
slave014=769, 135, 0, 0, 669, 18324
slave015=2, 669, 640, 0, 0, 18993
slave016=1, 640, 680, 0, 0, 19633
```

- Slave , Port Receive Time .
- Slave Disconnect Topology가
 - Slave delay가 .
 - Delay .



- Port ReceiveTime Slaves 가 .

1)

Distributed Clock

From: <http://comizoa.co.kr/info/> - -

Permanent link: http://comizoa.co.kr/info/doku.php?id=platform:ethercat:1_setup:10_config:20_desc:60_dcdelay&rev=1587032591

Last update: 2024/07/08 18:22