

Scan Error .....	1
DSP_NOT_RUNNING .....	1
ESI_FILE_NOT_FOUND .....	1
EEPROM_READ_FAILED .....	1
REVISIONNO_NOT_MATCH .....	1
SLOT_SCAN_FAILED .....	3
ALIAS_DUPLICATED .....	3
REVERSE_CONNECTED_SLAVE .....	3
ALSTATE_NOT_INIT .....	4

# Scan Error

× Configuration SCAN

Error

## DSP\_NOT\_RUNNING

- Master DSP(Firmware)가
- PC
- **12V**

## ESI\_FILE\_NOT\_FOUND

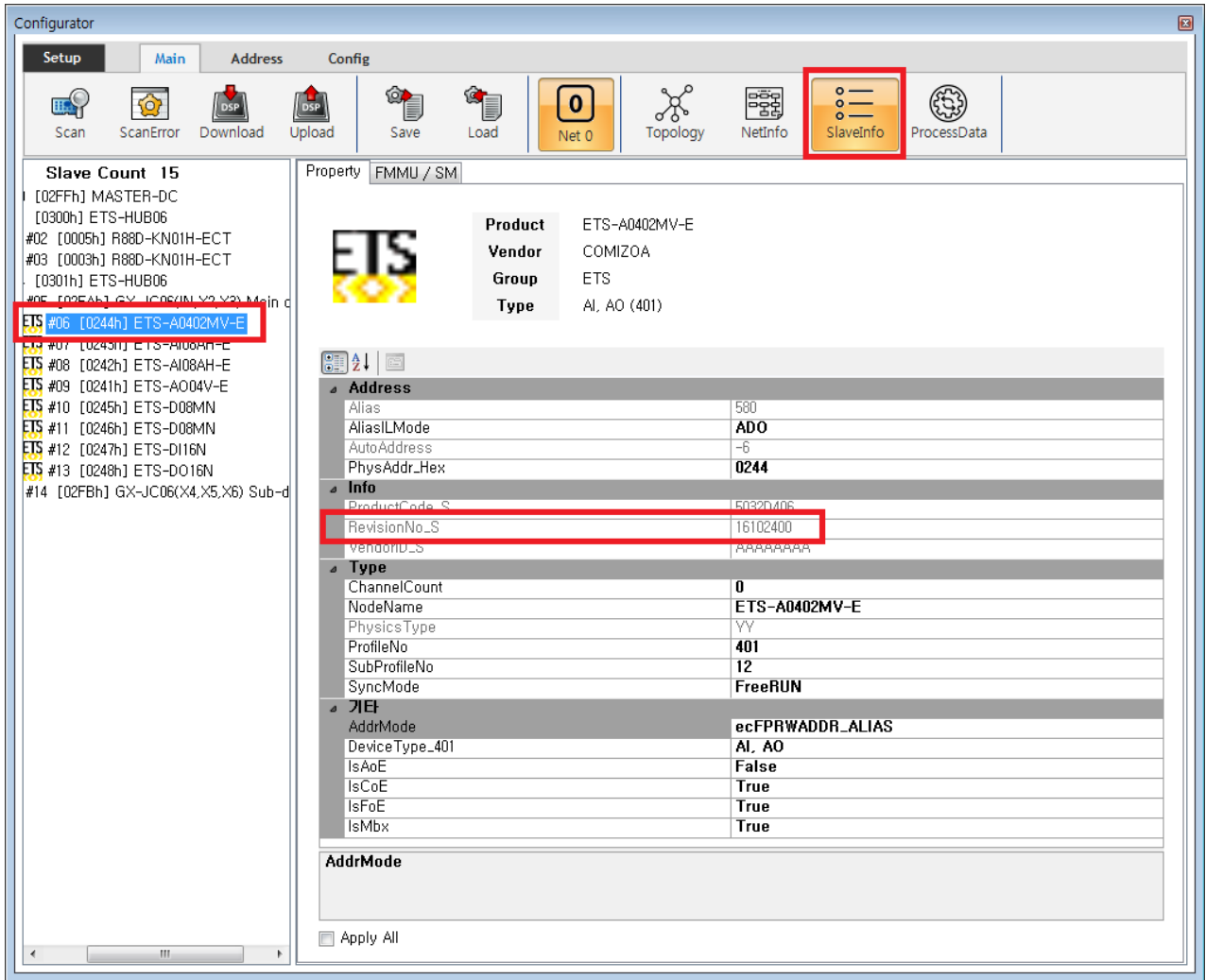
- **ESI File(.xml)**
- ESI <sup>1)</sup> .\ComiIDE\Data\Xml , Configurator

## EEPROM\_READ\_FAILED

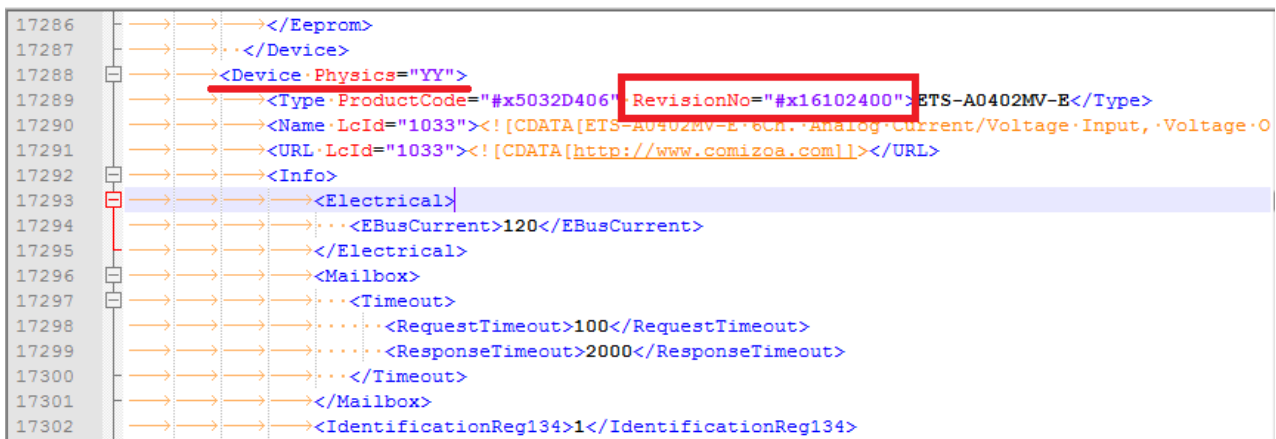
- EEPROM VendorID, ProductCode, RevisionNO
  - ESI File(.xml)
- **EEPROM Read Failed**
  - Master AIStatus Initial
  - Initial Slave
  - Slave AIStatus가 Initial , SCAN

## REVISIONNO\_NOT\_MATCH

- ESI File(.xml) RevisionNo 가
  - ESI 가 <sup>2)</sup>



- RevisionNo SlaveInfo Tab RevisionNo



- ESI "RevisionNo" Device Type Node 가
- RevisionNo가 Device 가 ESI 3) '\\ComiIDE\Data\Xml' , Configurator

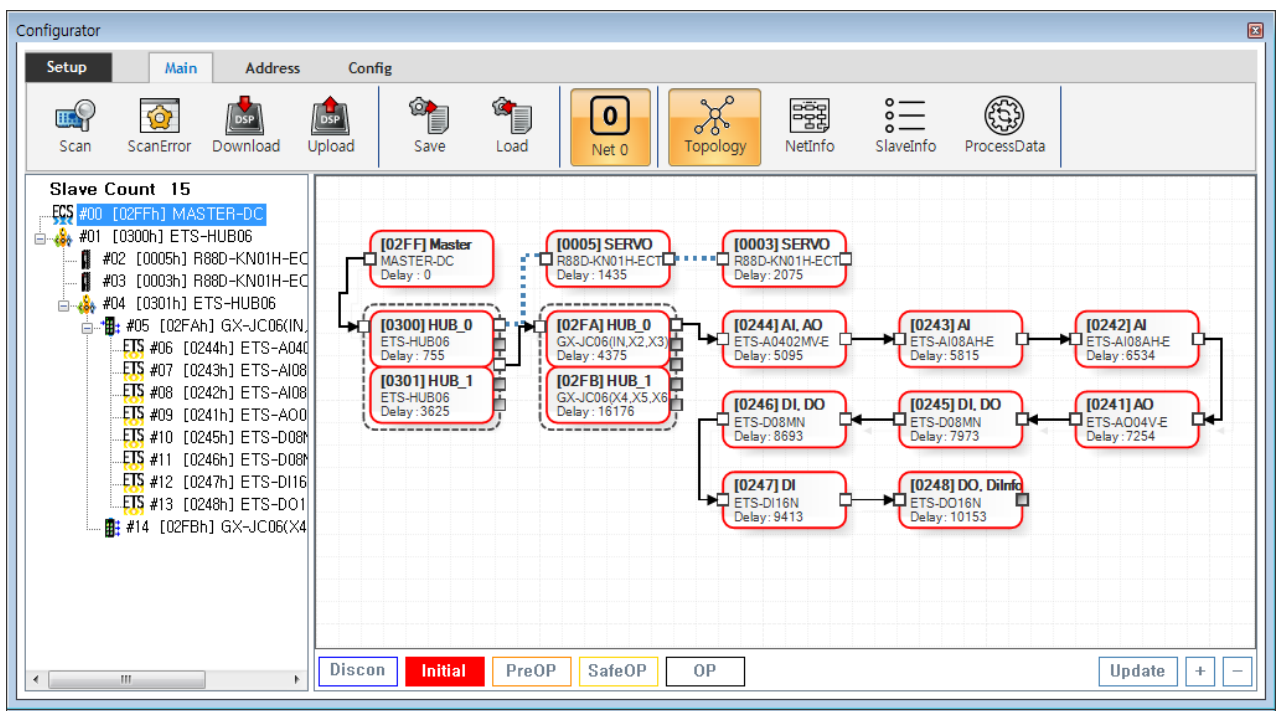
### SLOT\_SCAN\_FAILED

- MDP Profile 가
  - ProcessData 가 , Master
  - Download , PDO Data가 OP Status
- SlotInfo Slot 가 Setup Read 0xF050

### ALIAS\_DUPLICATED

- 가 가
- DeviceID Switch Address Address read failed

### REVERSE\_CONNECTED\_SLAVE



- InPort OutPort 가 .
  - TopologyView .
- In/Out Port .
  - Port 가 , / Port가 InPort .

### ALSTATE\_NOT\_INIT

- AI Status 가 Initial
  - AI Status 가 Initial , EEPROM Read Failed
- , Scan .

1)

2)

SW(Firmware ) RevisionNo

3)

From:

<http://comizoa.co.kr/info/> - -

Permanent link:

[http://comizoa.co.kr/info/doku.php?id=platform:ethercat:1\\_setup:10\\_config:ts:10\\_scan\\_error](http://comizoa.co.kr/info/doku.php?id=platform:ethercat:1_setup:10_config:ts:10_scan_error)

Last update: **2024/07/08 18:23**