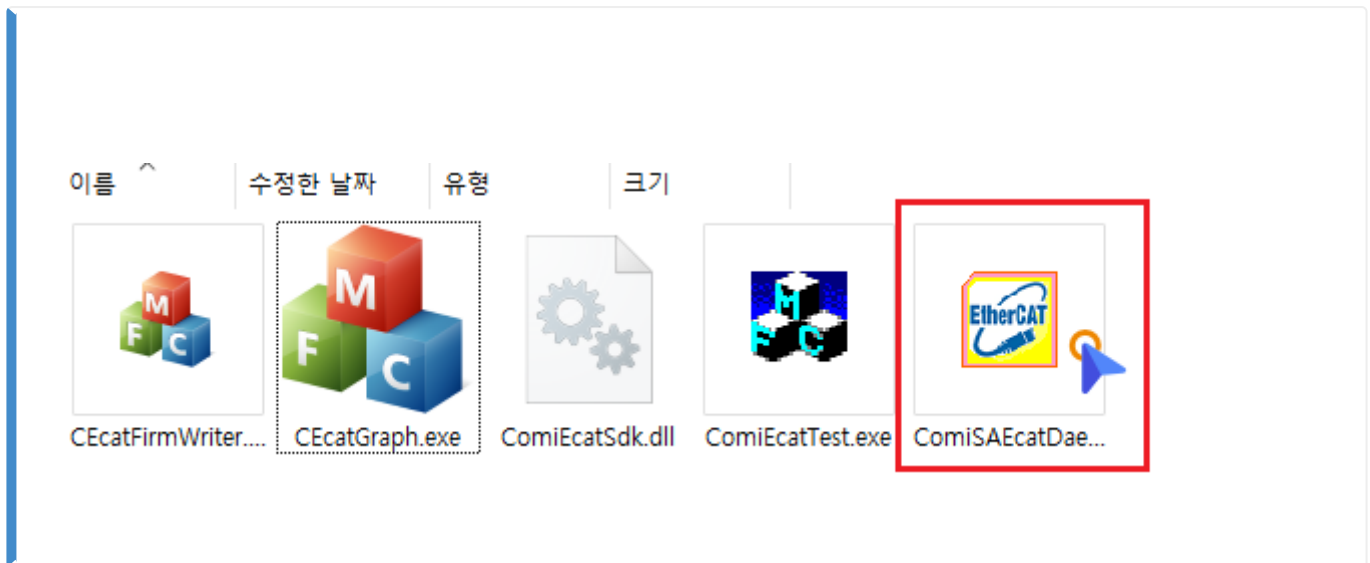


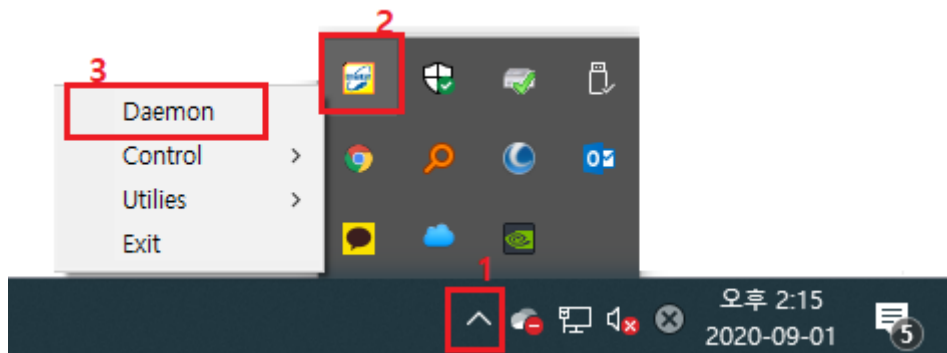
Daemon ..... 1  
..... 1  
Daemon ..... 2  
Slave Info. .... 3  
Network Config. .... 4

# Daemon

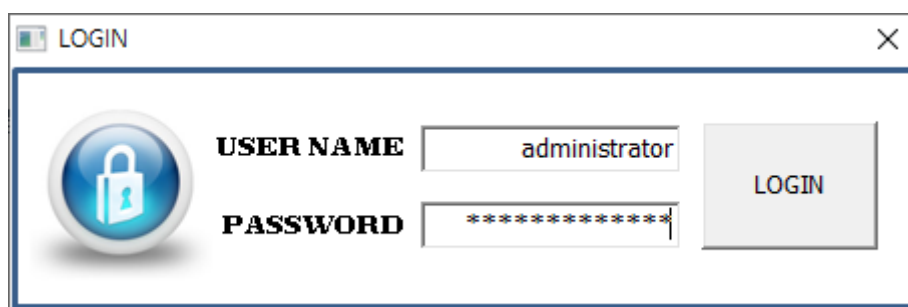
× Daemon



- ComiSAEcatDaemon.exe

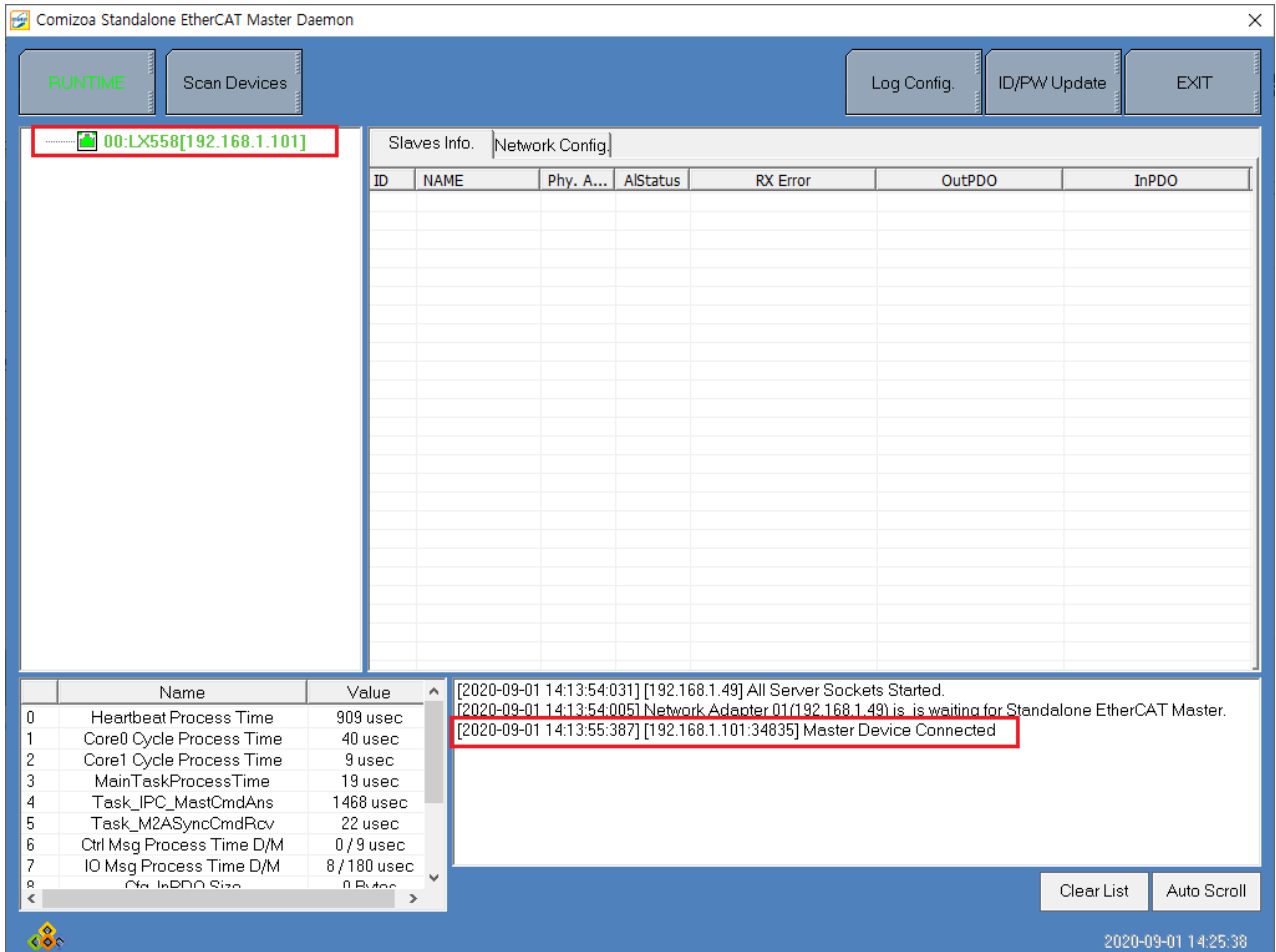


- Tray
- Tray **Daemon**



- ID Password 'administrator' .

### Daemon

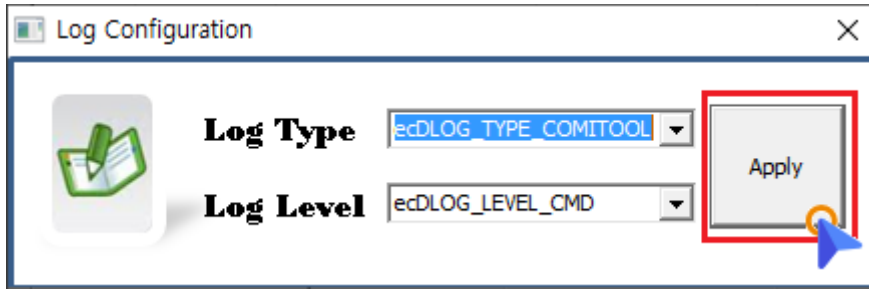


- 가 , Device List Master .

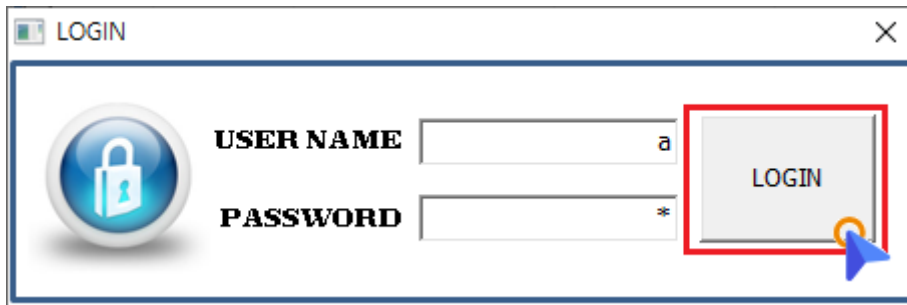


- **RUNTIME** : 'Simulation Mode' .  
 ◦ , 'Simulation Mode' 'RunTime Mode' .
- **Scan Device** : StandAlone EtherCAT Master .

- **Log Config** : Library Logging 가
- ComilDE **DLL Logger**



- **IP/PW Update** : ID Password , Login
- ID Password , Login



- **EXIT** : Daemon

**Slave Info.**

ID	NAME	Phy. A...	AIStatus	RX Error	OutPDO	InPDO
1	0x5132aa00	0x200	0x8	0x0		
2	0x5032da11	0x204	0x8	0x0	00	00 04

- Master
- Slave **Configurator**

## Network Config.

### DeviceID / DeviceIP

Slaves Info. **Network Config.**

Connected Device List **Set Device Address**

Index	Device Id	IP Address	Ctrl. Msg. Port	IO Msg. In Port	IO Msg. Out Port	IO Msg. Frame ...
1	0	192.168.1.101	34835	35040	35041	286

Daemon Network Configuration

Local IP Address: 192 . 168 . 1 . 49

Library Server Port: 55000

Master Server Port: 5000

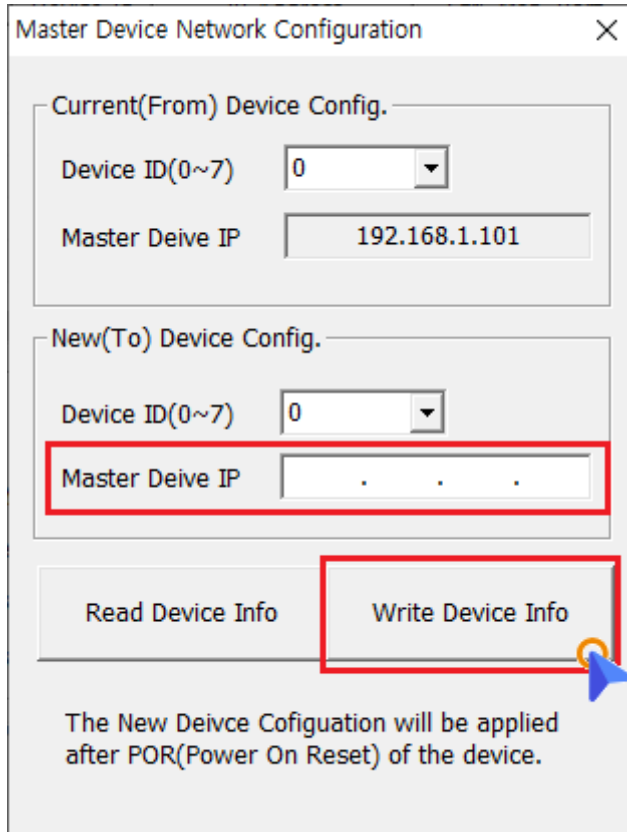
IO Msg. In Port: 35040

IO Msg. Out Port: 35041

Start Library Server   Stop Library Server

Start Master Server   Stop Master Server

- **Network Config.**      **Set Device Address**



- **New(To) Device Config. Info**
  - Device ID Device IP가 , Master , **Write Device Info**

### Description

- **Start Library Server :**
- **Stop Library Server :**
- **Start Master Server :**
- **Stop Library Server :**

From: <http://comizoa.co.kr/info/> - -

Permanent link: [http://comizoa.co.kr/info/doku.php?id=platform:ethercat:1\\_setup:20\\_ip:20\\_daemon&rev=1598941806](http://comizoa.co.kr/info/doku.php?id=platform:ethercat:1_setup:20_ip:20_daemon&rev=1598941806)

Last update: **2024/07/08 18:22**