

..... 1

..... 1

..... 4

# DriverIO

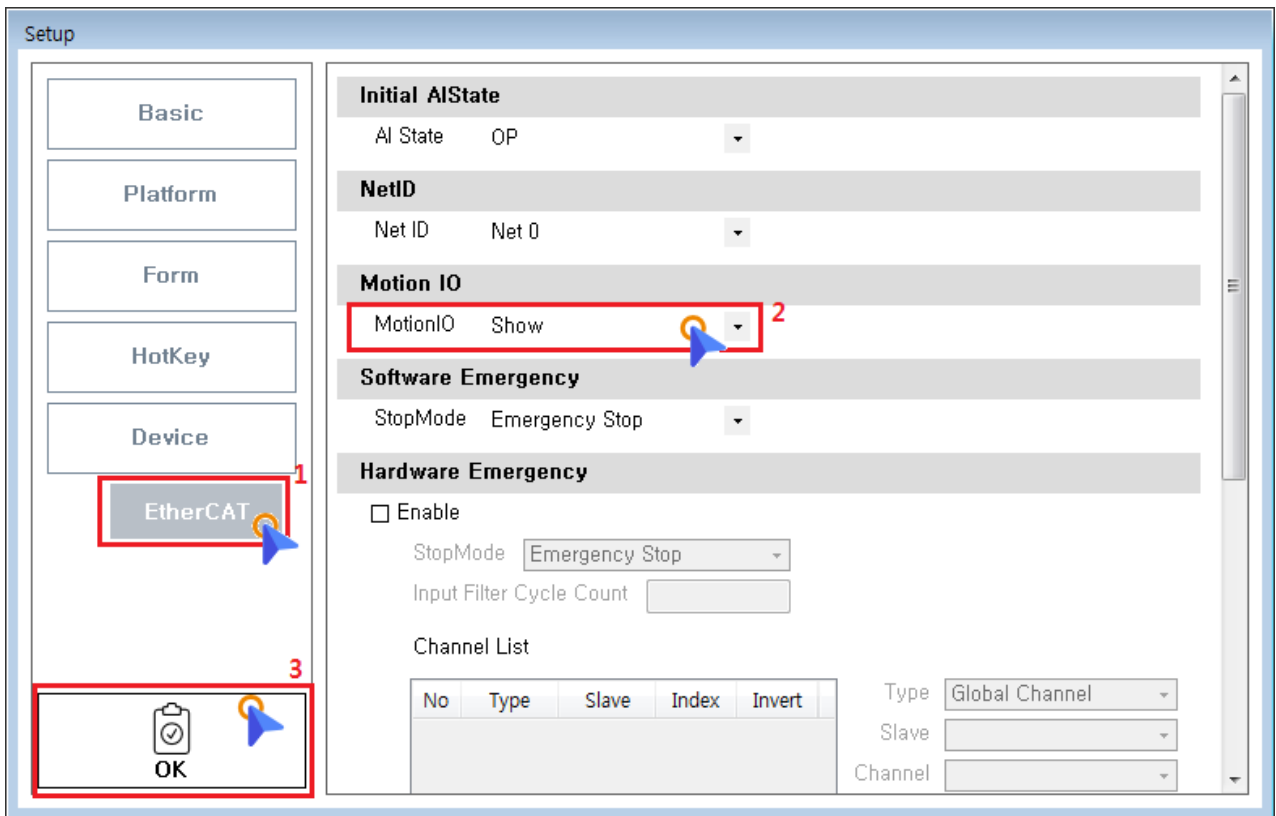
x 402 Profile

Driver

Digital Output Signal

- Firmware 1.94
- ComiIDE v1.4.1.0

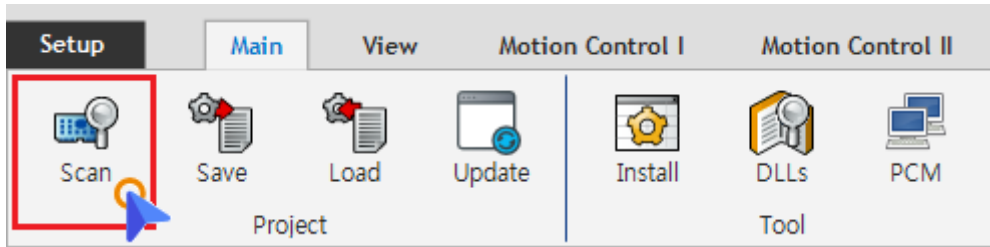
가 .  
가 .



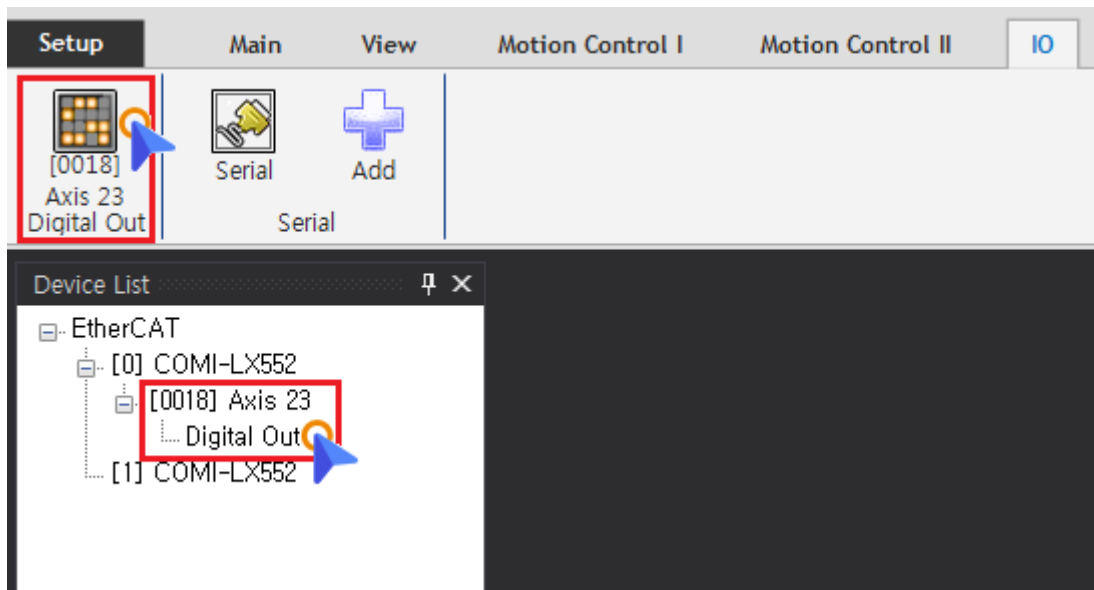
• Menu - EtherCAT Page

MotionIO 'Show'

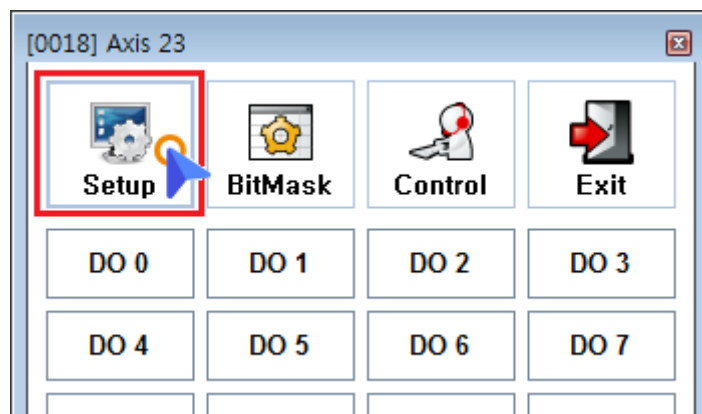
OK



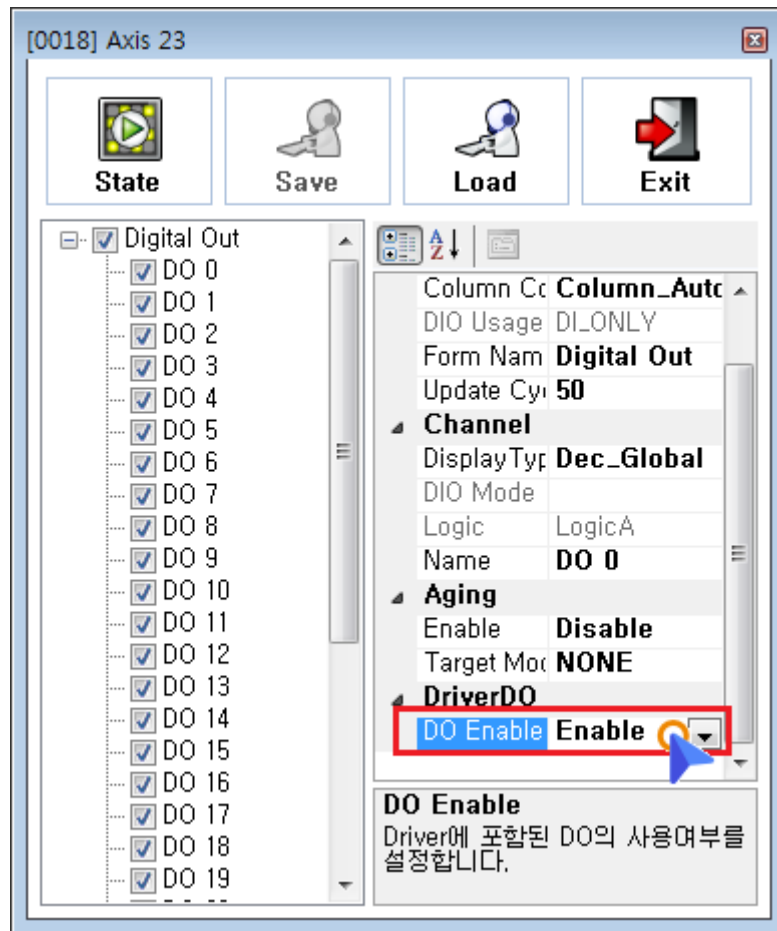
- Scan



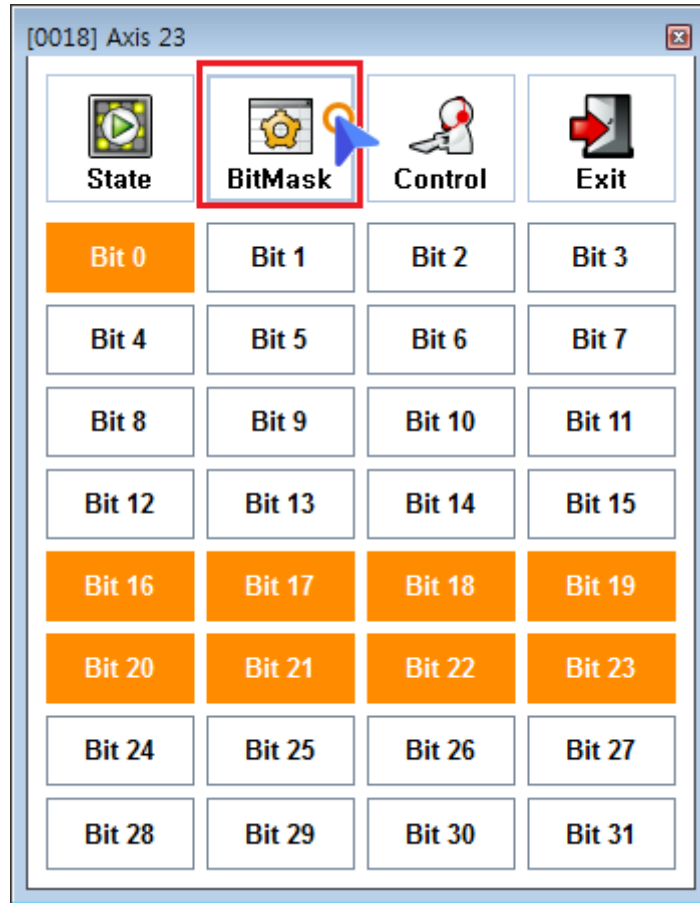
- Device List Axis Axis 'Digital Output'
  - **MotionIO**가 'Hide' , Device List Axis가
- Device List 'Digital Output'
  - **Menu - IO** Axis가 'Digital Output'



- **Setup**



- **DriverDO**      **DO Enable**    'Enable'
  - DO Enable                      BitMask
  -

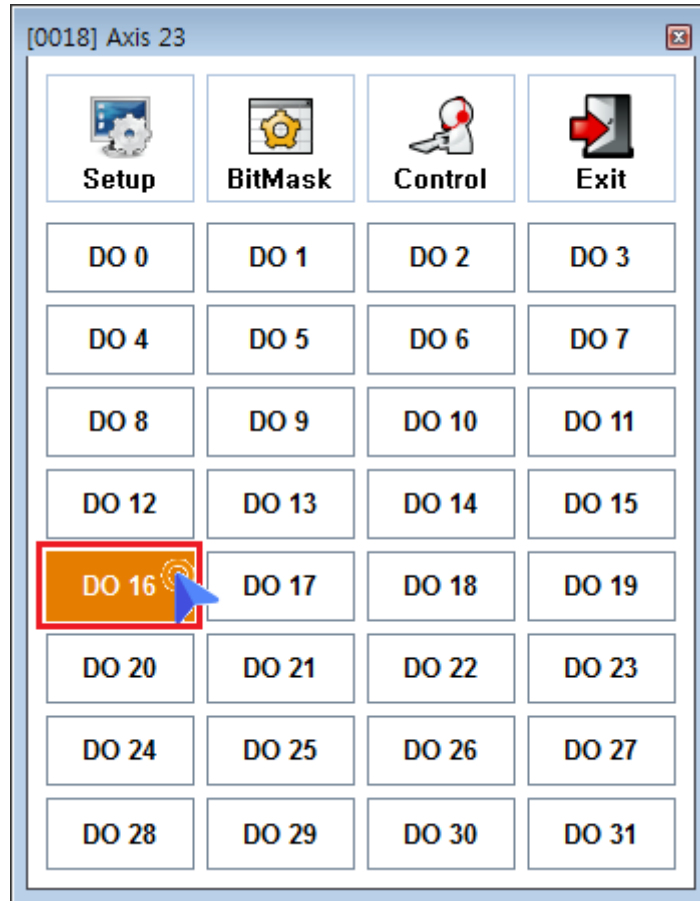


• BitMask

- BitMask Bit Enable
  - Bit
  - 가
  - Bit0 Motor Break , Bit16~Bit31



• State



- ○ BitMask 가 'Enable' 가

From:  
<http://comizoa.co.kr/info/> - -

Permanent link:  
[http://comizoa.co.kr/info/doku.php?id=platform:ethercat:70\\_users\\_guide:10\\_howto:test\\_driverio&rev=1588051679](http://comizoa.co.kr/info/doku.php?id=platform:ethercat:70_users_guide:10_howto:test_driverio&rev=1588051679)

Last update: **2024/07/08 18:22**